

**NGEF Antibody (N-term)**  
**Purified Rabbit Polyclonal Antibody (Pab)**  
**Catalog # AP21608a**

**Specification**

---

**NGEF Antibody (N-term) - Product Information**

Application	WB,E
Primary Accession	<a href="#">Q8N5V2</a>
Reactivity	Human, Rat
Host	Rabbit
Clonality	polyclonal
Isotype	Rabbit IgG
Calculated MW	82496
Antigen Region	187-220

**NGEF Antibody (N-term) - Additional Information**

**Gene ID** 25791

**Other Names**

Ephexin-1, Eph-interacting exchange protein, Neuronal guanine nucleotide exchange factor, NGEF

**Target/Specificity**

This NGEF antibody is generated from a rabbit immunized with a KLH conjugated synthetic peptide between 187-220 amino acids from the N-terminal region of human NGEF.

**Dilution**

WB~~1:1000-1:2000

E~~Use at an assay dependent concentration.

**Format**

Purified polyclonal antibody supplied in PBS with 0.09% (W/V) sodium azide. This antibody is purified through a protein A column, followed by peptide affinity purification.

**Storage**

Maintain refrigerated at 2-8°C for up to 2 weeks. For long term storage store at -20°C in small aliquots to prevent freeze-thaw cycles.

**Precautions**

NGEF Antibody (N-term) is for research use only and not for use in diagnostic or therapeutic procedures.

**NGEF Antibody (N-term) - Protein Information**

**Name** NGEF

**Function** Acts as a guanine nucleotide exchange factor (GEF) which differentially activates the GTPases RHOA, RAC1 and CDC42. Plays a role in axon guidance regulating ephrin-induced growth

cone collapse and dendritic spine morphogenesis. Upon activation by ephrin through EPHA4, the GEF activity switches toward RHOA resulting in its activation. Activated RHOA promotes cone retraction at the expense of RAC1- and CDC42-stimulated growth cone extension (By similarity).

#### Cellular Location

Cytoplasm. Membrane. Cell projection, growth cone. Note=Associated with membranes. Localizes to axonal growth cones (By similarity)

#### Tissue Location

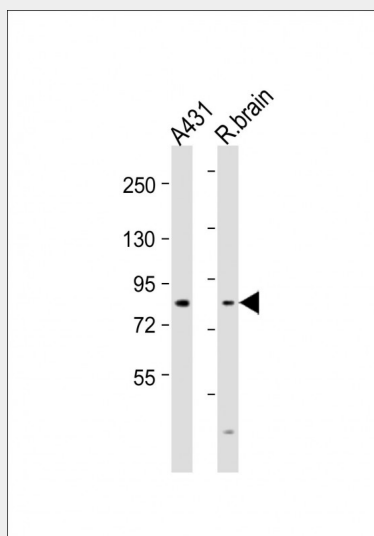
Highly expressed in brain specifically in caudate nucleus and to a lower extent in amygdala and hippocampus. Also detected in lung.

### NGEF Antibody (N-term) - Protocols

Provided below are standard protocols that you may find useful for product applications.

- [Western Blot](#)
- [Blocking Peptides](#)
- [Dot Blot](#)
- [Immunohistochemistry](#)
- [Immunofluorescence](#)
- [Immunoprecipitation](#)
- [Flow Cytometry](#)
- [Cell Culture](#)

### NGEF Antibody (N-term) - Images



All lanes : Anti-NGEF Antibody (N-term) at 1:1000-1:2000 dilution Lane 1: A431 whole cell lysates Lane 2: rat brain lysates Lysates/proteins at 20 µg per lane. Secondary Goat Anti-Rabbit IgG, (H+L), Peroxidase conjugated at 1/10000 dilution. Predicted band size : 82 kDa Blocking/Dilution buffer: 5% NFDM/TBST.

### NGEF Antibody (N-term) - Background

Acts as a guanine nucleotide exchange factor (GEF) which differentially activates the GTPases RHOA, RAC1 and CDC42. Plays a role in axon guidance regulating ephrin-induced growth cone collapse and dendritic spine morphogenesis. Upon activation by ephrin through EPHA4, the GEF

activity switches toward RHOA resulting in its activation. Activated RHOA promotes cone retraction at the expense of RAC1- and CDC42-stimulated growth cone extension (By similarity).

#### **NGEF Antibody (N-term) - References**

Ota T.,et al.Nat. Genet. 36:40-45(2004).  
Hillier L.W.,et al.Nature 434:724-731(2005).  
Rodrigues N.R.,et al.Genomics 65:53-61(2000).