

PPP6R1 Antibody (Center)
Purified Rabbit Polyclonal Antibody (Pab)
Catalog # AP21620c

Specification

PPP6R1 Antibody (Center) - Product Information

Application	WB,E
Primary Accession	Q9UPN7
Reactivity	Human, Mouse
Host	Rabbit
Clonality	polyclonal
Isotype	Rabbit IgG
Calculated MW	96724

PPP6R1 Antibody (Center) - Additional Information

Gene ID 22870

Other Names

Serine/threonine-protein phosphatase 6 regulatory subunit 1, SAPS domain family member 1, PPP6R1, KIAA1115, PP6R1, SAPS1

Target/Specificity

This PPP6R1 antibody is generated from a rabbit immunized with a KLH conjugated synthetic peptide between 455-489 amino acids from the Central region of human PPP6R1.

Dilution

WB~~1:1000-1:2000

E~~Use at an assay dependent concentration.

Format

Purified polyclonal antibody supplied in PBS with 0.09% (W/V) sodium azide. This antibody is purified through a protein A column, followed by peptide affinity purification.

Storage

Maintain refrigerated at 2-8°C for up to 2 weeks. For long term storage store at -20°C in small aliquots to prevent freeze-thaw cycles.

Precautions

PPP6R1 Antibody (Center) is for research use only and not for use in diagnostic or therapeutic procedures.

PPP6R1 Antibody (Center) - Protein Information

Name PPP6R1

Synonyms KIAA1115, PP6R1, SAPS1

Function Regulatory subunit of protein phosphatase 6 (PP6). May function as a scaffolding PP6 subunit. Involved in the PP6-mediated dephosphorylation of NFKBIE opposing its degradation in response to TNF-alpha.

Cellular Location

Cytoplasm

Tissue Location

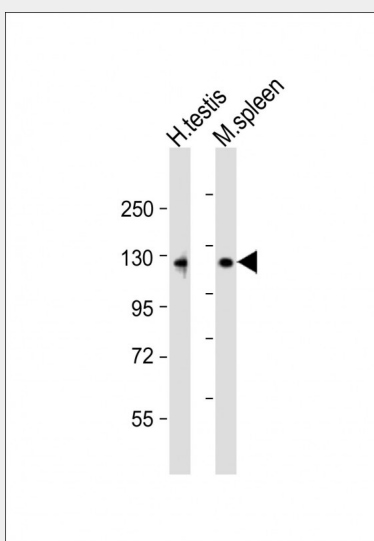
Ubiquitous with higher expression in testis.

PPP6R1 Antibody (Center) - Protocols

Provided below are standard protocols that you may find useful for product applications.

- [Western Blot](#)
- [Blocking Peptides](#)
- [Dot Blot](#)
- [Immunohistochemistry](#)
- [Immunofluorescence](#)
- [Immunoprecipitation](#)
- [Flow Cytometry](#)
- [Cell Culture](#)

PPP6R1 Antibody (Center) - Images



All lanes : Anti-PPP6R1 Antibody (Center) at 1:1000-1:2000 dilution Lane 1: human testis lysate Lane 2: mouse spleen lysate Lysates/proteins at 20 µg per lane. Secondary Goat Anti-Rabbit IgG, (H+L), Peroxidase conjugated at 1/10000 dilution. Predicted band size : 97 kDa Blocking/Dilution buffer: 5% NFDM/TBST.

PPP6R1 Antibody (Center) - Background

Regulatory subunit of protein phosphatase 6 (PP6). May function as a scaffolding PP6 subunit. Involved in the PP6- mediated dephosphorylation of NFKBIE opposing its degradation in response to TNF-alpha.

PPP6R1 Antibody (Center) - References

Kikuno R.,et al.DNA Res. 6:197-205(1999).
Ohara O.,et al.Submitted (JAN-2005) to the EMBL/GenBank/DDBJ databases.
Olsen J.V.,et al.Cell 127:635-648(2006).
Stefansson B.,et al.J. Biol. Chem. 281:22624-22634(2006).
Stefansson B.,et al.Biochemistry 47:1442-1451(2008).