

CALY Antibody (C-term)
Purified Rabbit Polyclonal Antibody (Pab)
Catalog # AP21631b**Specification**

CALY Antibody (C-term) - Product Information

Application	WB,E
Primary Accession	Q9NYX4
Reactivity	Human
Host	Rabbit
Clonality	polyclonal
Isotype	Rabbit IgG
Calculated MW	23434

CALY Antibody (C-term) - Additional Information**Gene ID** 50632**Other Names**

Neuron-specific vesicular protein calcyon, CALY, DRD1IP

Target/Specificity

This CALY antibody is generated from a rabbit immunized with a KLH conjugated synthetic peptide between 154-187 amino acids from the C-terminal region of human CALY.

Dilution

WB~~1:2000

E~~Use at an assay dependent concentration.

Format

Purified polyclonal antibody supplied in PBS with 0.09% (W/V) sodium azide. This antibody is purified through a protein A column, followed by peptide affinity purification.

Storage

Maintain refrigerated at 2-8°C for up to 2 weeks. For long term storage store at -20°C in small aliquots to prevent freeze-thaw cycles.

Precautions

CALY Antibody (C-term) is for research use only and not for use in diagnostic or therapeutic procedures.

CALY Antibody (C-term) - Protein Information**Name** CALY**Synonyms** DRD1IP**Function** Interacts with clathrin light chain A and stimulates clathrin self-assembly and

clathrin-mediated endocytosis.

Cellular Location

Cytoplasmic vesicle membrane; Single-pass membrane protein. Cell membrane; Single-pass membrane protein

Tissue Location

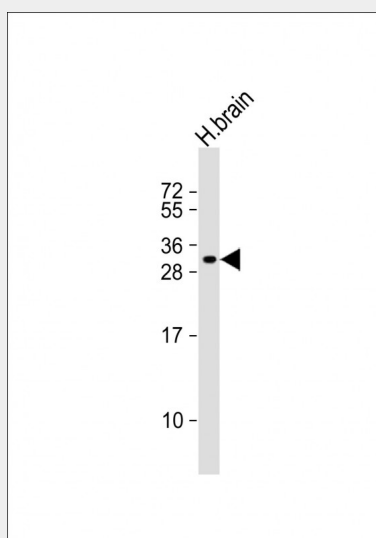
Expressed in the pyramidal cells of the prefrontal cortex, in hypothalamus and in caudate nucleus. No expression in spleen. Up-regulated in the prefrontal cortex of schizophrenic patients with nearly twice the levels of non-schizophrenics

CALY Antibody (C-term) - Protocols

Provided below are standard protocols that you may find useful for product applications.

- [Western Blot](#)
- [Blocking Peptides](#)
- [Dot Blot](#)
- [Immunohistochemistry](#)
- [Immunofluorescence](#)
- [Immunoprecipitation](#)
- [Flow Cytometry](#)
- [Cell Culture](#)

CALY Antibody (C-term) - Images



Anti-CALY Antibody (Cterm) at 1:2000 dilution + human brain lysate Lysates/proteins at 20 µg per lane. Secondary Goat Anti-Rabbit IgG, (H+L), Peroxidase conjugated at 1/10000 dilution. Predicted band size : 23 kDa Blocking/Dilution buffer: 5% NFDM/TBST.

CALY Antibody (C-term) - Background

Interacts with clathrin light chain A and stimulates clathrin self-assembly and clathrin-mediated endocytosis.

CALY Antibody (C-term) - References

Lezcano N.,et al.Science 287:1660-1664(2000).
Lezcano N.,et al.Science 314:1681-1681(2006).
Deloukas P.,et al.Nature 429:375-381(2004).
Mural R.J.,et al.Submitted (SEP-2005) to the EMBL/GenBank/DDBJ databases.
Koh P.O.,et al.Arch. Gen. Psychiatry 60:311-319(2003).