

HNRNPA1L2 Antibody (N-Term)
Purified Rabbit Polyclonal Antibody (Pab)
Catalog # AP21634a**Specification**

HNRNPA1L2 Antibody (N-Term) - Product Information

Application	WB, IHC-P,E
Primary Accession	Q32P51
Reactivity	Human
Host	Rabbit
Clonality	polyclonal
Isotype	Rabbit IgG
Calculated MW	34225

HNRNPA1L2 Antibody (N-Term) - Additional Information**Gene ID** 144983**Other Names**

Heterogeneous nuclear ribonucleoprotein A1-like 2, hnRNP A1-like 2, hnRNP core protein A1-like 2, HNRNPA1L2, HNRNPA1L

Target/Specificity

This HNRNPA1L2 antibody is generated from a rabbit immunized with a KLH conjugated synthetic peptide between 22-56 amino acids from human HNRNPA1L2.

Dilution

WB~~1:2000

IHC-P~~1:25

E~~Use at an assay dependent concentration.

Format

Purified polyclonal antibody supplied in PBS with 0.09% (W/V) sodium azide. This antibody is purified through a protein A column, followed by peptide affinity purification.

Storage

Maintain refrigerated at 2-8°C for up to 2 weeks. For long term storage store at -20°C in small aliquots to prevent freeze-thaw cycles.

Precautions

HNRNPA1L2 Antibody (N-Term) is for research use only and not for use in diagnostic or therapeutic procedures.

HNRNPA1L2 Antibody (N-Term) - Protein Information**Name** HNRNPA1L2**Synonyms** HNRNPA1L

Function Involved in the packaging of pre-mRNA into hnRNP particles, transport of poly(A) mRNA from the nucleus to the cytoplasm and may modulate splice site selection.

Cellular Location

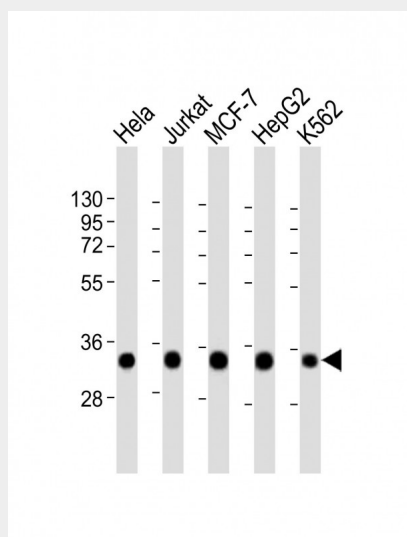
Nucleus. Cytoplasm.

HNRNPA1L2 Antibody (N-Term) - Protocols

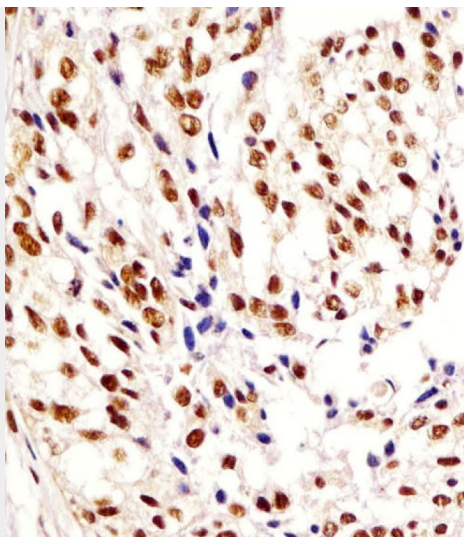
Provided below are standard protocols that you may find useful for product applications.

- [Western Blot](#)
- [Blocking Peptides](#)
- [Dot Blot](#)
- [Immunohistochemistry](#)
- [Immunofluorescence](#)
- [Immunoprecipitation](#)
- [Flow Cytometry](#)
- [Cell Culture](#)

HNRNPA1L2 Antibody (N-Term) - Images



All lanes : Anti-HNRNPA1L2 Antibody (N-Term) at 1:2000 dilution Lane 1: HeLa whole cell lysate Lane 2: Jurkat whole cell lysate Lane 3: MCF-7 whole cell lysate Lane 4: HepG2 whole cell lysate Lane 5: K562 whole cell lysate Lysates/proteins at 20 µg per lane. Secondary Goat Anti-Rabbit IgG, (H+L), Peroxidase conjugated at 1/10000 dilution. Predicted band size : 34 kDa Blocking/Dilution buffer: 5% NFDM/TBST.



AP21634a staining HNRNPA1L2 in human breast carcinoma tissue sections by Immunohistochemistry (IHC-P - paraformaldehyde-fixed, paraffin-embedded sections). Tissue was fixed with formaldehyde and blocked with 3% BSA for 0.5 hour at room temperature; antigen retrieval was by heat mediation with a citrate buffer (pH6). Samples were incubated with primary antibody (1/25) for 1 hour at 37°C. A undiluted biotinylated goat polyvalent antibody was used as the secondary antibody.

HNRNPA1L2 Antibody (N-Term) - Background

Involved in the packaging of pre-mRNA into hnRNP particles, transport of poly(A) mRNA from the nucleus to the cytoplasm and may modulate splice site selection.

HNRNPA1L2 Antibody (N-Term) - References

Ota T., et al. Nat. Genet. 36:40-45(2004).

Dunham A., et al. Nature 428:522-528(2004).

Mural R.J., et al. Submitted (JUL-2005) to the EMBL/GenBank/DDBJ databases.