

**Zebrafish dlc Antibody (C-Term)**  
**Purified Rabbit Polyclonal Antibody (Pab)**  
**Catalog # AP21638b****Specification**

---

**Zebrafish dlc Antibody (C-Term) - Product Information**

Application	WB,E
Primary Accession	<a href="#">O9IAT6</a>
Reactivity	Zebrafish
Host	Rabbit
Clonality	polyclonal
Isotype	Rabbit IgG
Antigen Region	557-591

**Zebrafish dlc Antibody (C-Term) - Additional Information****Gene ID** 30120**Other Names**

Delta-like protein C, DeltaC, delC, dlc

**Target/Specificity**

This Zebrafish dlc antibody is generated from a rabbit immunized with a KLH conjugated synthetic peptide between 557-591 amino acids from zebrafish dlc.

**Dilution**

WB~~1:2000

E~~Use at an assay dependent concentration.

**Format**

Purified polyclonal antibody supplied in PBS with 0.09% (W/V) sodium azide. This antibody is purified through a protein A column, followed by peptide affinity purification.

**Storage**

Maintain refrigerated at 2-8°C for up to 2 weeks. For long term storage store at -20°C in small aliquots to prevent freeze-thaw cycles.

**Precautions**

Zebrafish dlc Antibody (C-Term) is for research use only and not for use in diagnostic or therapeutic procedures.

**Zebrafish dlc Antibody (C-Term) - Protein Information****Name** dlc

**Function** Acts as a ligand for Notch receptors and is involved in somitogenesis. Can activate Notch receptors. Required in somite segmentation to keep the oscillations of neighboring presomitic mesoderm cells synchronized.

**Cellular Location**

Membrane; Single-pass type I membrane protein

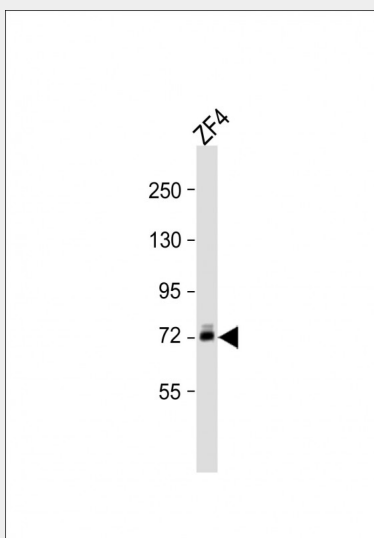
**Tissue Location**

Strongly expressed in the early retina, where it precedes other delta proteins. Also expressed in cranial ganglia, in sensory epithelia including ear and lateral line and in scattered epidermal cells. In the mesoderm, expression is visible by 50% epiboly; it is expressed subsequently in the tail bud, in stripes in the presomitic mesoderm and in the posterior half of each somite. Also expressed in notochord, blood vessels and pronephros. In contrast to other delta proteins, it is not expressed in the majority of nascent primary neurons. In somites, it marks the posterior part of each formed somite, while deltaD (dld) marks the anterior part

**Zebrafish dlc Antibody (C-Term) - Protocols**

Provided below are standard protocols that you may find useful for product applications.

- [Western Blot](#)
- [Blocking Peptides](#)
- [Dot Blot](#)
- [Immunohistochemistry](#)
- [Immunofluorescence](#)
- [Immunoprecipitation](#)
- [Flow Cytometry](#)
- [Cell Culture](#)

**Zebrafish dlc Antibody (C-Term) - Images**

Anti-dlc Antibody (C-Term) at 1:2000 dilution + ZF4 whole cell lysate Lysates/proteins at 20 µg per lane. Secondary Goat Anti-Rabbit IgG, (H+L), Peroxidase conjugated at 1/10000 dilution. Predicted band size : 73 kDa Blocking/Dilution buffer: 5% NFDm/TBST.

**Zebrafish dlc Antibody (C-Term) - Background**

Acts as a ligand for Notch receptors and is involved in somitogenesis. Can activate Notch receptors. Required in somite segmentation to keep the oscillations of neighboring presomitic mesoderm cells synchronized.

**Zebrafish dlc Antibody (C-Term) - References**

Smithers L.E.,et al.Mech. Dev. 90:119-123(2000).  
Jiang Y.-J.,et al.Nature 408:475-479(2000).