

FEV Antibody (N-Term)
Purified Rabbit Polyclonal Antibody (Pab)
Catalog # AP21652a**Specification**

FEV Antibody (N-Term) - Product Information

Application	WB, IHC-P,E
Primary Accession	Q99581
Reactivity	Human
Host	Rabbit
Clonality	polyclonal
Isotype	Rabbit IgG
Calculated MW	25030
Antigen Region	17-49

FEV Antibody (N-Term) - Additional Information**Gene ID** 54738**Other Names**

Protein FEV, Fifth Ewing variant protein, PC12 ETS domain-containing transcription factor 1, PC12 ETS factor 1, Pet-1, FEV, PET1

Target/Specificity

This FEV antibody is generated from a rabbit immunized with a KLH conjugated synthetic peptide between 17-49 amino acids from human FEV.

Dilution

WB~~1:2000

IHC-P~~1:25

E~~Use at an assay dependent concentration.

Format

Purified polyclonal antibody supplied in PBS with 0.09% (W/V) sodium azide. This antibody is purified through a protein A column, followed by peptide affinity purification.

Storage

Maintain refrigerated at 2-8°C for up to 2 weeks. For long term storage store at -20°C in small aliquots to prevent freeze-thaw cycles.

Precautions

FEV Antibody (N-Term) is for research use only and not for use in diagnostic or therapeutic procedures.

FEV Antibody (N-Term) - Protein Information**Name** FEV

Synonyms PET1

Function Functions as a transcriptional regulator. According to PubMed:[12761502](#), it functions as a transcriptional repressor. Functions in the differentiation and the maintenance of the central serotonergic neurons. May play a role in cell growth.

Cellular Location

Nucleus {ECO:0000255|PROSITE-ProRule:PRU00237, ECO:0000269|PubMed:12761502}

Tissue Location

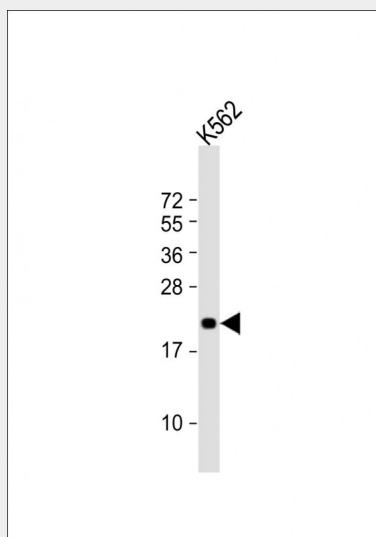
In brain, exclusively expressed in the major serotonergic neurons of the dorsal and median raphe nuclei located in the midbrain and pons. Also detected in prostate and small intestine

FEV Antibody (N-Term) - Protocols

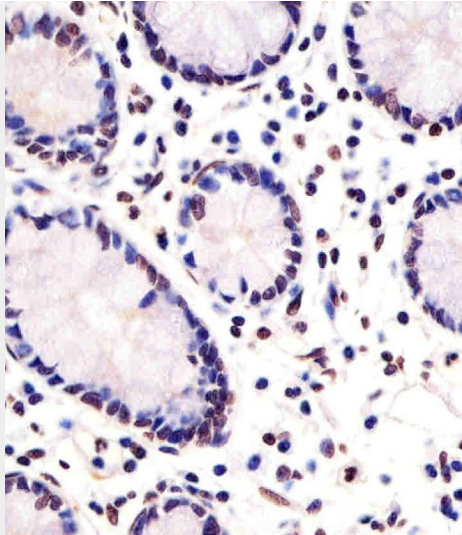
Provided below are standard protocols that you may find useful for product applications.

- [Western Blot](#)
- [Blocking Peptides](#)
- [Dot Blot](#)
- [Immunohistochemistry](#)
- [Immunofluorescence](#)
- [Immunoprecipitation](#)
- [Flow Cytometry](#)
- [Cell Culture](#)

FEV Antibody (N-Term) - Images



Anti-FEV Antibody (N-Term) at 1:2000 dilution + K562 whole cell lysate Lysates/proteins at 20 µg per lane. Secondary Goat Anti-Rabbit IgG, (H+L), Peroxidase conjugated at 1/10000 dilution. Predicted band size : 25 kDa Blocking/Dilution buffer: 5% NFDm/TBST.



AP21652a staining FEV in human small intestine sections by Immunohistochemistry (IHC-P - paraformaldehyde-fixed, paraffin-embedded sections). Tissue was fixed with formaldehyde and blocked with 3% BSA for 0.5 hour at room temperature; antigen retrieval was by heat mediation with a citrate buffer (pH6). Samples were incubated with primary antibody (1/25) for 1 hour at 37°C. A undiluted biotinylated goat polyvalent antibody was used as the secondary antibody.

FEV Antibody (N-Term) - Background

Functions as a transcriptional regulator. According to PubMed:12761502, it functions as a transcriptional repressor. Functions in the differentiation and the maintenance of the central serotonergic neurons. May play a role in cell growth.

FEV Antibody (N-Term) - References

Peter M., et al. *Oncogene* 14:1159-1164(1997).
Hillier L.W., et al. *Nature* 434:724-731(2005).
Mural R.J., et al. Submitted (JUL-2005) to the EMBL/GenBank/DDBJ databases.
Maurer P., et al. *Oncogene* 22:3319-3329(2003).
Maurer P., et al. *Neurosci. Lett.* 357:215-218(2004).