

TFDP2 Antibody (Center)
Purified Rabbit Polyclonal Antibody (Pab)
Catalog # AP21655c**Specification**

TFDP2 Antibody (Center) - Product Information

Application	WB,E
Primary Accession	Q14188
Reactivity	Human
Host	Rabbit
Clonality	polyclonal
Isotype	Rabbit IgG
Calculated MW	49236

TFDP2 Antibody (Center) - Additional Information**Gene ID** 7029**Other Names**

Transcription factor Dp-2, E2F dimerization partner 2, TFDP2, DP2

Target/Specificity

This TFDP2 antibody is generated from a rabbit immunized with a KLH conjugated synthetic peptide between 175-208 amino acids from the Central region of human TFDP2.

Dilution

WB~~1:2000

E~~Use at an assay dependent concentration.

Format

Purified polyclonal antibody supplied in PBS with 0.09% (W/V) sodium azide. This antibody is purified through a protein A column, followed by peptide affinity purification.

Storage

Maintain refrigerated at 2-8°C for up to 2 weeks. For long term storage store at -20°C in small aliquots to prevent freeze-thaw cycles.

Precautions

TFDP2 Antibody (Center) is for research use only and not for use in diagnostic or therapeutic procedures.

TFDP2 Antibody (Center) - Protein Information**Name** TFDP2**Synonyms** DP2**Function** Can stimulate E2F-dependent transcription. Binds DNA cooperatively with E2F family

members through the E2 recognition site, 5'-TTTC[CG]CGC-3', found in the promoter region of a number of genes whose products are involved in cell cycle regulation or in DNA replication. The TFDP2:E2F complex functions in the control of cell- cycle progression from G1 to S phase. The E2F1:DP complex appears to mediate both cell proliferation and apoptosis. Blocks adipocyte differentiation by repressing CEBPA binding to its target gene promoters (PubMed:[20176812](#)).

Cellular Location

Nucleus.

Tissue Location

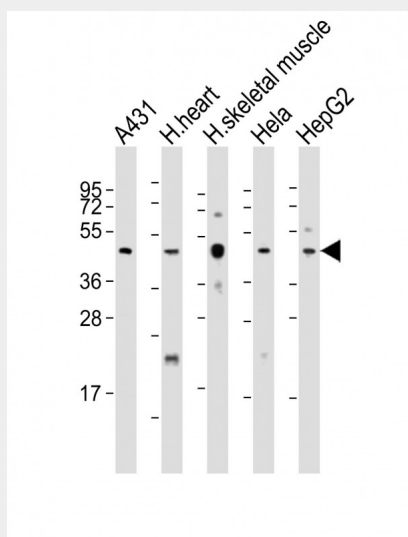
High levels in heart and skeletal muscle. Also found in placenta, kidney, brain, lung and liver. The presence as well as the abundance of the different transcripts appear to vary significantly in different tissues and cell lines

TFDP2 Antibody (Center) - Protocols

Provided below are standard protocols that you may find useful for product applications.

- [Western Blot](#)
- [Blocking Peptides](#)
- [Dot Blot](#)
- [Immunohistochemistry](#)
- [Immunofluorescence](#)
- [Immunoprecipitation](#)
- [Flow Cytometry](#)
- [Cell Culture](#)

TFDP2 Antibody (Center) - Images



All lanes : Anti-TFDP2 Antibody (Center) at 1:2000 dilution Lane 1: A431 whole cell lysate Lane 2: human heart lysate Lane 3: human skeletal muscle whole cell lysate Lane 4: HeLa whole cell lysate Lane 5: HepG2 whole cell lysate Lysates/proteins at 20 µg per lane. Secondary Goat Anti-Rabbit IgG, (H+L), Peroxidase conjugated at 1/10000 dilution. Predicted band size : 49 kDa Blocking/Dilution buffer: 5% NFDM/TBST.

TFDP2 Antibody (Center) - Background

Can stimulate E2F-dependent transcription. Binds DNA cooperatively with E2F family members through the E2 recognition site, 5'-TTTC[CG]CGC-3', found in the promoter region of a number of genes whose products are involved in cell cycle regulation or in DNA replication. The DP2/E2F complex functions in the control of cell-cycle progression from G1 to S phase. The E2F1/DP complex appears to mediate both cell proliferation and apoptosis.

TFDP2 Antibody (Center) - References

Wu C.-L.,et al.Mol. Cell. Biol. 15:2536-2546(1995).
Zhang Y.,et al.Oncogene 10:2085-2093(1995).
Ota T.,et al.Nat. Genet. 36:40-45(2004).
Li W.B.,et al.Submitted (JUL-2004) to the EMBL/GenBank/DDBJ databases.
Muzny D.M.,et al.Nature 440:1194-1198(2006).