

**TFCP2 Antibody (Center)**  
**Purified Rabbit Polyclonal Antibody (Pab)**  
**Catalog # AP21657c****Specification**

---

**TFCP2 Antibody (Center) - Product Information**

|                   |                        |
|-------------------|------------------------|
| Application       | WB,E                   |
| Primary Accession | <a href="#">Q12800</a> |
| Reactivity        | Mouse                  |
| Host              | Rabbit                 |
| Clonality         | polyclonal             |
| Isotype           | Rabbit IgG             |
| Calculated MW     | 57256                  |

**TFCP2 Antibody (Center) - Additional Information****Gene ID** 7024**Other Names**

Alpha-globin transcription factor CP2, SAA3 enhancer factor, Transcription factor LSF, TFCP2, LSF, SEF

**Target/Specificity**

This TFCP2 antibody is generated from a rabbit immunized with a KLH conjugated synthetic peptide between 282-316 amino acids from the Central region of human TFCP2.

**Dilution**

WB~~1:2000

E~~Use at an assay dependent concentration.

**Format**

Purified polyclonal antibody supplied in PBS with 0.09% (W/V) sodium azide. This antibody is purified through a protein A column, followed by peptide affinity purification.

**Storage**

Maintain refrigerated at 2-8°C for up to 2 weeks. For long term storage store at -20°C in small aliquots to prevent freeze-thaw cycles.

**Precautions**

TFCP2 Antibody (Center) is for research use only and not for use in diagnostic or therapeutic procedures.

**TFCP2 Antibody (Center) - Protein Information****Name** TFCP2**Synonyms** LSF, SEF

**Function** Binds a variety of cellular and viral promoters including fibrinogen, alpha-globin, SV40 and HIV-1 promoters. Activation of the alpha-globin promoter in erythroid cells is via synergistic interaction with UBP1 (By similarity). Functions as part of the SSP (stage selector protein) complex. Facilitates the interaction of the gamma-globin genes with enhancer elements contained in the locus control region in fetal erythroid cells. Interacts by binding to the stage selector element (SSE) in the proximal gamma-globin promoter.

#### **Cellular Location**

Nucleus

#### **Tissue Location**

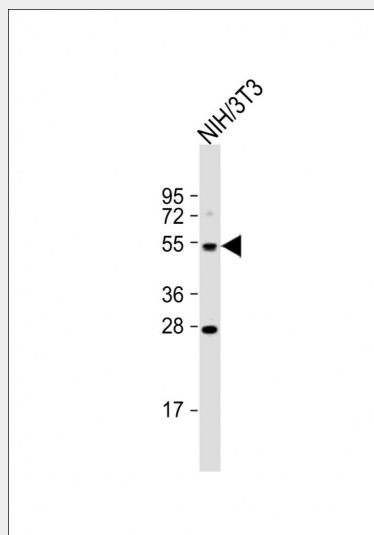
Ubiquitous. Expressed in brain, ovary, kidney, thymus, spleen, liver, adrenal, heart and lung (at protein level)

### **TFCP2 Antibody (Center) - Protocols**

Provided below are standard protocols that you may find useful for product applications.

- [Western Blot](#)
- [Blocking Peptides](#)
- [Dot Blot](#)
- [Immunohistochemistry](#)
- [Immunofluorescence](#)
- [Immunoprecipitation](#)
- [Flow Cytometry](#)
- [Cell Culture](#)

### **TFCP2 Antibody (Center) - Images**



Anti-TFCP2 Antibody (Center) at 1:2000 dilution + NIH/3T3 whole cell lysate Lysates/proteins at 20 µg per lane. Secondary Goat Anti-Rabbit IgG, (H+L), Peroxidase conjugated at 1/10000 dilution. Predicted band size : 57 kDa Blocking/Dilution buffer: 5% NFDM/TBST.

### **TFCP2 Antibody (Center) - Background**

Binds a variety of cellular and viral promoters including fibrinogen, alpha-globin, SV40 and HIV-1 promoters. Activation of the alpha-globin promoter in erythroid cells is via synergistic interaction

with UBP1 (By similarity). Functions as part of the SSP (stage selector protein) complex. Facilitates the interaction of the gamma-globin genes with enhancer elements contained in the locus control region in fetal erythroid cells. Interacts by binding to the stage selector element (SSE) in the proximal gamma-globin promoter.

#### **TFCP2 Antibody (Center) - References**

Lim L.C.,et al.Mol. Cell. Biol. 12:828-835(1992).  
Yoon J.-B.,et al.Mol. Cell. Biol. 14:1776-1785(1994).  
Shirra M.K.,et al.Mol. Cell. Biol. 14:5076-5087(1994).  
Ota T.,et al.Nat. Genet. 36:40-45(2004).  
Mural R.J.,et al.Submitted (JUL-2005) to the EMBL/GenBank/DDBJ databases.