

**PRSS33 Antibody (Center)**  
**Purified Rabbit Polyclonal Antibody (Pab)**  
**Catalog # AP21663c****Specification**

---

**PRSS33 Antibody (Center) - Product Information**

Application	WB,E
Primary Accession	<a href="#">Q8NF86</a>
Reactivity	Human
Host	Rabbit
Clonality	polyclonal
Isotype	Rabbit IgG
Calculated MW	29787

**PRSS33 Antibody (Center) - Additional Information****Gene ID** 260429**Other Names**

Serine protease 33, 3421-, Serine protease EOS, PRSS33

**Target/Specificity**

This PRSS33 antibody is generated from a rabbit immunized with a KLH conjugated synthetic peptide between 105-128 amino acids from the Central region of human PRSS33.

**Dilution**

WB~~1:2000

E~~Use at an assay dependent concentration.

**Format**

Purified polyclonal antibody supplied in PBS with 0.09% (W/V) sodium azide. This antibody is purified through a protein A column, followed by peptide affinity purification.

**Storage**

Maintain refrigerated at 2-8°C for up to 2 weeks. For long term storage store at -20°C in small aliquots to prevent freeze-thaw cycles.

**Precautions**

PRSS33 Antibody (Center) is for research use only and not for use in diagnostic or therapeutic procedures.

**PRSS33 Antibody (Center) - Protein Information****Name** PRSS33**Function** Serine protease that has amidolytic activity, cleaving its substrates before Arg residues.**Cellular Location**

Secreted.

#### Tissue Location

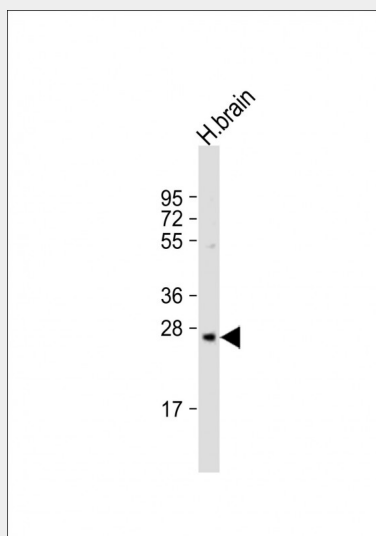
Predominantly expressed in macrophages. Present in the spleen, small and large intestine, lung and brain (at protein level). Highly expressed in peripheral leukocytes, ovary, retina, spleen and stomach. Moderately expressed in thymus, uterus and platelets, as well as some brain tissues, such as thalamus and fetal brain.

#### PRSS33 Antibody (Center) - Protocols

Provided below are standard protocols that you may find useful for product applications.

- [Western Blot](#)
- [Blocking Peptides](#)
- [Dot Blot](#)
- [Immunohistochemistry](#)
- [Immunofluorescence](#)
- [Immunoprecipitation](#)
- [Flow Cytometry](#)
- [Cell Culture](#)

#### PRSS33 Antibody (Center) - Images



Anti-PRSS33 Antibody (Center) at 1:2000 dilution + human brain lysate Lysates/proteins at 20 µg per lane. Secondary Goat Anti-Rabbit IgG, (H+L), Peroxidase conjugated at 1/10000 dilution. Predicted band size : 30 kDa Blocking/Dilution buffer: 5% NFDm/TBST.

#### PRSS33 Antibody (Center) - Background

Serine protease that has amidolytic activity, cleaving its substrates before Arg residues.

#### PRSS33 Antibody (Center) - References

Chen C.,et al.Biochem. J. 374:97-107(2003).  
Martin J.,et al.Nature 432:988-994(2004).  
Mural R.J.,et al.Submitted (SEP-2005) to the EMBL/GenBank/DDBJ databases.