

**SRGAP3 Antibody (C-term)**  
**Purified Rabbit Polyclonal Antibody (Pab)**  
**Catalog # AP21672b****Specification**

---

**SRGAP3 Antibody (C-term) - Product Information**

Application	WB,E
Primary Accession	<a href="#">O43295</a>
Reactivity	Human
Host	Rabbit
Clonality	polyclonal
Isotype	Rabbit IgG
Calculated MW	124504

**SRGAP3 Antibody (C-term) - Additional Information****Gene ID** 9901**Other Names**

SLIT-ROBO Rho GTPase-activating protein 3, srGAP3, Mental disorder-associated GAP, Rho GTPase-activating protein 14, WAVE-associated Rac GTPase-activating protein, WRP, SRGAP3, ARHGAP14, KIAA0411, KIAA1156, MEGAP, SRGAP2

**Target/Specificity**

This SRGAP3 antibody is generated from a rabbit immunized with a KLH conjugated synthetic peptide between 956-989 amino acids from the C-terminal region of human SRGAP3.

**Dilution**

WB~~1:2000

**Format**

Purified polyclonal antibody supplied in PBS with 0.09% (W/V) sodium azide. This antibody is purified through a protein A column, followed by peptide affinity purification.

**Storage**

Maintain refrigerated at 2-8°C for up to 2 weeks. For long term storage store at -20°C in small aliquots to prevent freeze-thaw cycles.

**Precautions**

SRGAP3 Antibody (C-term) is for research use only and not for use in diagnostic or therapeutic procedures.

**SRGAP3 Antibody (C-term) - Protein Information****Name** SRGAP3**Synonyms** ARHGAP14, KIAA0411, KIAA1156, MEGAP, SRG

**Function** GTPase-activating protein for RAC1 and perhaps Cdc42, but not for RhoA small GTPase. May attenuate RAC1 signaling in neurons.

**Tissue Location**

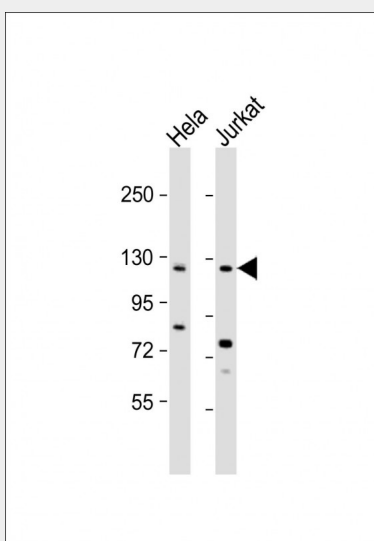
Highly expressed in adult and fetal brain. Expressed at low levels in kidney. Isoform 3 is expressed in the kidney but is absent in the brain.

**SRGAP3 Antibody (C-term) - Protocols**

Provided below are standard protocols that you may find useful for product applications.

- [Western Blot](#)
- [Blocking Peptides](#)
- [Dot Blot](#)
- [Immunohistochemistry](#)
- [Immunofluorescence](#)
- [Immunoprecipitation](#)
- [Flow Cytometry](#)
- [Cell Culture](#)

**SRGAP3 Antibody (C-term) - Images**



All lanes : Anti-SRGAP3 Antibody (C-term) at 1:2000 dilution Lane 1: HeLa whole cell lysate Lane 2: Jurkat whole cell lysate Lysates/proteins at 20 µg per lane. Secondary Goat Anti-Rabbit IgG, (H+L), Peroxidase conjugated at 1/10000 dilution. Predicted band size : 125 kDa Blocking/Dilution buffer: 5% NFDM/TBST.

**SRGAP3 Antibody (C-term) - Background**

GTPase-activating protein for RAC1 and perhaps Cdc42, but not for RhoA small GTPase. May attenuate RAC1 signaling in neurons.

**SRGAP3 Antibody (C-term) - References**

Soderling S.H.,et al.Nat. Cell Biol. 4:970-975(2002).  
Endris V.,et al.Proc. Natl. Acad. Sci. U.S.A. 99:11754-11759(2002).  
Ishikawa K.,et al.DNA Res. 4:307-313(1997).

Nakajima D.,et al.DNA Res. 9:99-106(2002).  
Wong K.,et al.Cell 107:209-221(2001).