

SLC24A4 Antibody (Center)
Purified Rabbit Polyclonal Antibody (Pab)
Catalog # AP21680c**Specification**

SLC24A4 Antibody (Center) - Product Information

Application	WB,E
Primary Accession	Q8NFF2
Reactivity	Human
Host	Rabbit
Clonality	polyclonal
Isotype	Rabbit IgG
Calculated MW	69042

SLC24A4 Antibody (Center) - Additional Information**Gene ID** 123041**Other Names**

Sodium/potassium/calcium exchanger 4, Na(+)/K(+)/Ca(2+)-exchange protein 4, Solute carrier family 24 member 4, SLC24A4, NCKX4

Target/Specificity

This SLC24A4 antibody is generated from a rabbit immunized with a KLH conjugated synthetic peptide between 344-378 amino acids from the Central region of human SLC24A4.

Dilution

WB~~1:2000

Format

Purified polyclonal antibody supplied in PBS with 0.09% (W/V) sodium azide. This antibody is purified through a protein A column, followed by peptide affinity purification.

Storage

Maintain refrigerated at 2-8°C for up to 2 weeks. For long term storage store at -20°C in small aliquots to prevent freeze-thaw cycles.

Precautions

SLC24A4 Antibody (Center) is for research use only and not for use in diagnostic or therapeutic procedures.

SLC24A4 Antibody (Center) - Protein Information**Name** SLC24A4 ([HGNC:10978](#))

Function Calcium, potassium:sodium antiporter that transports 1 Ca(2+) and 1 K(+) in exchange for 4 Na(+) (PubMed:[12379639](#), PubMed:[26631410](#)). Controls the rapid response termination and proper regulation of adaptation in olfactory sensory neurons (OSNs) which subsequently influences

how odor information is encoded and perceived (By similarity). May play a role in calcium transport during amelogenesis (PubMed:[23375655](#), PubMed:[24621671](#)).

Cellular Location

Cell membrane; Multi-pass membrane protein. Cytoplasm {ECO:0000250|UniProtKB:Q8CGQ8}

Tissue Location

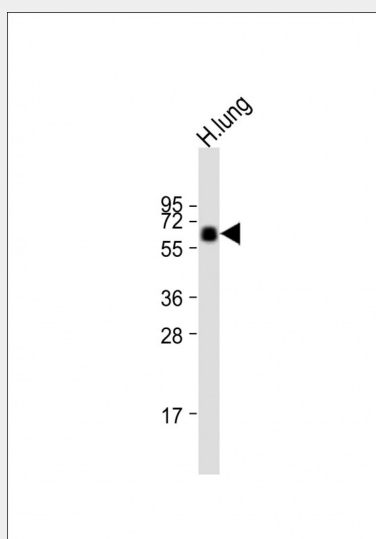
Expressed abundantly in all regions of the brain, aorta, lung and thymus (PubMed:12379639).
Expressed at lower levels in the stomach and intestine (PubMed:12379639)

SLC24A4 Antibody (Center) - Protocols

Provided below are standard protocols that you may find useful for product applications.

- [Western Blot](#)
- [Blocking Peptides](#)
- [Dot Blot](#)
- [Immunohistochemistry](#)
- [Immunofluorescence](#)
- [Immunoprecipitation](#)
- [Flow Cytometry](#)
- [Cell Culture](#)

SLC24A4 Antibody (Center) - Images



Anti-SLC24A4 Antibody (Center) at 1:2000 dilution + human lung lysate Lysates/proteins at 20 µg per lane. Secondary Goat Anti-Rabbit IgG, (H+L), Peroxidase conjugated at 1/10000 dilution. Predicted band size : 69 kDa Blocking/Dilution buffer: 5% NFDm/TBST.

SLC24A4 Antibody (Center) - Background

Transports 1 Ca(2+) and 1 K(+) in exchange for 4 Na(+). Controls the rapid response termination and proper regulation of adaptation in olfactory sensory neurons (OSNs) which subsequently influences how odor information is encoded and perceived. May play a role in calcium transport during amelogenesis (By similarity).

SLC24A4 Antibody (Center) - References

Li X.-F.,et al.J. Biol. Chem. 277:48410-48417(2002).
Ota T.,et al.Nat. Genet. 36:40-45(2004).
Heilig R.,et al.Nature 421:601-607(2003).
Mural R.J.,et al.Submitted (JUL-2005) to the EMBL/GenBank/DDBJ databases.
Bechtel S.,et al.BMC Genomics 8:399-399(2007).