

**RASGRP2 Antibody (N-term)**  
**Purified Rabbit Polyclonal Antibody (Pab)**  
**Catalog # AP21681a****Specification**

---

**RASGRP2 Antibody (N-term) - Product Information**

Application	WB,E
Primary Accession	<a href="#">Q7LDG7</a>
Reactivity	Human
Host	Rabbit
Clonality	polyclonal
Isotype	Rabbit IgG
Calculated MW	69248

**RASGRP2 Antibody (N-term) - Additional Information****Gene ID** 10235**Other Names**

RAS guanyl-releasing protein 2, Calcium and DAG-regulated guanine nucleotide exchange factor I, CalDAG-GEFI, Cdc25-like protein, hCDC25L, F25B33 kinase-like protein, RASGRP2, CDC25L, MCG7

**Target/Specificity**

This RASGRP2 antibody is generated from a rabbit immunized with a KLH conjugated synthetic peptide between 108-142 amino acids from the N-terminal region of human RASGRP2.

**Dilution**

WB~~1:2000

E~~Use at an assay dependent concentration.

**Format**

Purified polyclonal antibody supplied in PBS with 0.09% (W/V) sodium azide. This antibody is purified through a protein A column, followed by peptide affinity purification.

**Storage**

Maintain refrigerated at 2-8°C for up to 2 weeks. For long term storage store at -20°C in small aliquots to prevent freeze-thaw cycles.

**Precautions**

RASGRP2 Antibody (N-term) is for research use only and not for use in diagnostic or therapeutic procedures.

**RASGRP2 Antibody (N-term) - Protein Information****Name** RASGRP2**Synonyms** CDC25L, MCG7

**Function** Functions as a calcium- and DAG-regulated nucleotide exchange factor specifically activating Rap through the exchange of bound GDP for GTP. May also activate other GTPases such as RRAS, RRAS2, NRAS, KRAS but not HRAS. Functions in aggregation of platelets and adhesion of T-lymphocytes and neutrophils probably through inside-out integrin activation. May function in the muscarinic acetylcholine receptor M1/CHRM1 signaling pathway.

#### Cellular Location

Cytoplasm, cytosol. Cell membrane; Peripheral membrane protein. Synapse, synaptosome. Cell projection, ruffle membrane; Peripheral membrane protein. Note=Found both in the cytosol and associated with membranes. Isoform 2 mainly localizes to the cell membrane. Enriched at juxtamembrane areas and membrane ruffles through association with F- actin. Localizes to the cell bodies and axons of striatal neurons (By similarity).

#### Tissue Location

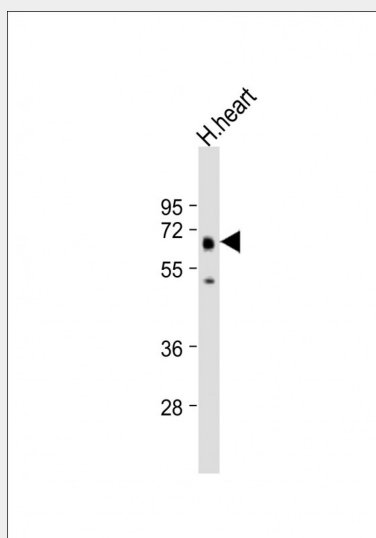
Detected in platelets, neutrophils and T lymphocytes (at protein level). Expressed in brain where it is enriched in the striatum. Also expressed in the hematopoietic system. Detected in heart, brain, lung, placenta, liver, skeletal muscle and kidney

### RASGRP2 Antibody (N-term) - Protocols

Provided below are standard protocols that you may find useful for product applications.

- [Western Blot](#)
- [Blocking Peptides](#)
- [Dot Blot](#)
- [Immunohistochemistry](#)
- [Immunofluorescence](#)
- [Immunoprecipitation](#)
- [Flow Cytometry](#)
- [Cell Culture](#)

### RASGRP2 Antibody (N-term) - Images



Anti-RASGRP2 Antibody (N-term) at 1:2000 dilution + human heart lysate Lysates/proteins at 20 µg per lane. Secondary Goat Anti-Rabbit IgG, (H+L), Peroxidase conjugated at 1/10000 dilution. Predicted band size : 69 kDa Blocking/Dilution buffer: 5% NFDm/TBST.

### RASGRP2 Antibody (N-term) - Background

Functions as a calcium- and DAG-regulated nucleotide exchange factor specifically activating Rap through the exchange of bound GDP for GTP. May also activates other GTPases such as RRAS, RRAS2, NRAS, KRAS but not HRAS. Functions in aggregation of platelets and adhesion of T-lymphocytes and neutrophils probably through inside-out integrin activation. May function in the muscarinic acetylcholine receptor M1/CHRM1 signaling pathway.

**RASGRP2 Antibody (N-term) - References**

Kedra D.,et al.Hum. Genet. 100:611-619(1997).  
Kawasaki H.,et al.Proc. Natl. Acad. Sci. U.S.A. 95:13278-13283(1998).  
Clyde-Smith J.,et al.J. Biol. Chem. 275:32260-32267(2000).  
Ota T.,et al.Nat. Genet. 36:40-45(2004).  
Taylor T.D.,et al.Nature 440:497-500(2006).