

CFI (light chain) Antibody (C-term)
Purified Rabbit Polyclonal Antibody (Pab)
Catalog # AP21688b**Specification**

CFI (light chain) Antibody (C-term) - Product Information

Application	WB,E
Primary Accession	P05156
Reactivity	Human
Host	Rabbit
Clonality	polyclonal
Isotype	Rabbit IgG
Calculated MW	65750

CFI (light chain) Antibody (C-term) - Additional Information**Gene ID** 3426**Other Names**

Complement factor I, C3B/C4B inactivator, Complement factor I heavy chain, Complement factor I light chain, CFI, IF

Target/Specificity

This CFI (light chain) antibody is generated from a rabbit immunized with a KLH conjugated synthetic peptide between 447-482 amino acids from the C-terminal region of human CFI (light chain).

Dilution

WB~~1:2000

E~~Use at an assay dependent concentration.

Format

Purified polyclonal antibody supplied in PBS with 0.09% (W/V) sodium azide. This antibody is purified through a protein A column, followed by peptide affinity purification.

Storage

Maintain refrigerated at 2-8°C for up to 2 weeks. For long term storage store at -20°C in small aliquots to prevent freeze-thaw cycles.

Precautions

CFI (light chain) Antibody (C-term) is for research use only and not for use in diagnostic or therapeutic procedures.

CFI (light chain) Antibody (C-term) - Protein Information**Name** CFI**Synonyms** IF

Function Trypsin-like serine protease that plays an essential role in regulating the immune response by controlling all complement pathways. Inhibits these pathways by cleaving three peptide bonds in the alpha- chain of C3b and two bonds in the alpha-chain of C4b thereby inactivating these proteins (PubMed:[17320177](#), PubMed:[7360115](#)). Essential cofactors for these reactions include factor H and C4BP in the fluid phase and membrane cofactor protein/CD46 and CR1 on cell surfaces (PubMed:[12055245](#), PubMed:[2141838](#), PubMed:[9605165](#)). The presence of these cofactors on healthy cells allows degradation of deposited C3b by CFI in order to prevent undesired complement activation, while in apoptotic cells or microbes, the absence of such cofactors leads to C3b-mediated complement activation and subsequent opsonization (PubMed:[28671664](#)).

Cellular Location

Secreted, extracellular space. Secreted

Tissue Location

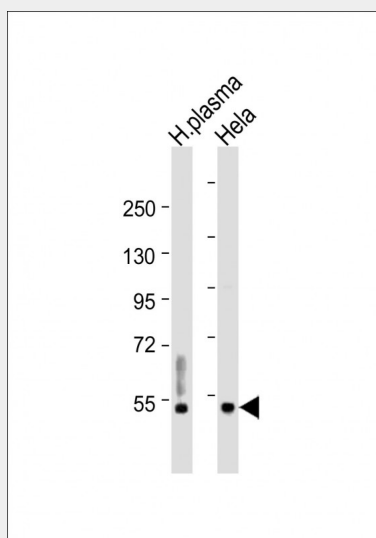
Expressed in the liver by hepatocytes (PubMed:[6327681](#)). Also present in other cells such as monocytes, fibroblasts or keratinocytes (PubMed:[17320177](#), PubMed:[6444659](#))

CFI (light chain) Antibody (C-term) - Protocols

Provided below are standard protocols that you may find useful for product applications.

- [Western Blot](#)
- [Blocking Peptides](#)
- [Dot Blot](#)
- [Immunohistochemistry](#)
- [Immunofluorescence](#)
- [Immunoprecipitation](#)
- [Flow Cytometry](#)
- [Cell Culture](#)

CFI (light chain) Antibody (C-term) - Images



All lanes : Anti-CFI(light chain) Antibody (C-term) at 1:2000 dilution Lane 1: human plasma lysate Lane 2: HeLa whole cell lysate Lysates/proteins at 20 µg per lane. Secondary Goat Anti-Rabbit IgG, (H+L), Peroxidase conjugated at 1/10000 dilution. Predicted band size : 66 kDa Blocking/Dilution buffer: 5% NFDM/TBST.

CFI (light chain) Antibody (C-term) - Background

Responsible for cleaving the alpha-chains of C4b and C3b in the presence of the cofactors C4-binding protein and factor H respectively.

CFI (light chain) Antibody (C-term) - References

Catterall C.F.,et al.Biochem. J. 242:849-856(1987).
Goldberger G.,et al.J. Biol. Chem. 262:10065-10071(1987).
Hillier L.W.,et al.Nature 434:724-731(2005).
Minta J.O.,et al.Gene 208:17-24(1998).
Ullman C.G.,et al.FEBS Lett. 371:199-203(1995).