

**Mouse Lmtk3 Antibody (Center)**  
**Purified Rabbit Polyclonal Antibody (Pab)**  
**Catalog # AP21694c**

**Specification**

---

**Mouse Lmtk3 Antibody (Center) - Product Information**

Application	WB,E
Primary Accession	<a href="#">Q5XJV6</a>
Reactivity	Mouse
Host	Rabbit
Clonality	polyclonal
Isotype	Rabbit IgG
Calculated MW	150891

**Mouse Lmtk3 Antibody (Center) - Additional Information**

**Gene ID** 381983

**Other Names**

Serine/threonine-protein kinase LMTK3, Apoptosis-associated tyrosine kinase 3, Lemur tyrosine kinase 3, Lmtk3, Aatyk3

**Target/Specificity**

This Mouse Lmtk3 antibody is generated from a rabbit immunized with a KLH conjugated synthetic peptide between 871-905 amino acids from the Central region of Mouse Lmtk3.

**Dilution**

WB~~1:2000

E~~Use at an assay dependent concentration.

**Format**

Purified polyclonal antibody supplied in PBS with 0.09% (W/V) sodium azide. This antibody is purified through a protein A column, followed by peptide affinity purification.

**Storage**

Maintain refrigerated at 2-8°C for up to 2 weeks. For long term storage store at -20°C in small aliquots to prevent freeze-thaw cycles.

**Precautions**

Mouse Lmtk3 Antibody (Center) is for research use only and not for use in diagnostic or therapeutic procedures.

**Mouse Lmtk3 Antibody (Center) - Protein Information**

**Name** Lmtk3

**Synonyms** Aatyk3

**Function** Protein kinase which phosphorylates ESR1 (in vitro) and protects it against proteasomal degradation. May also regulate ESR1 levels indirectly via a PKC-AKT-FOXO3 pathway where it decreases the activity of PKC and the phosphorylation of AKT, thereby increasing binding of transcriptional activator FOXO3 to the ESR1 promoter and increasing ESR1 transcription (By similarity). Involved in endocytic trafficking of N-methyl-D-aspartate receptors (NMDAR) in neurons (PubMed:[24760852](#)).

#### Cellular Location

Membrane; Single- pass membrane protein. Cell projection, axon. Cell projection, dendrite. Golgi apparatus membrane. Note=Punctate pattern in cell projections

#### Tissue Location

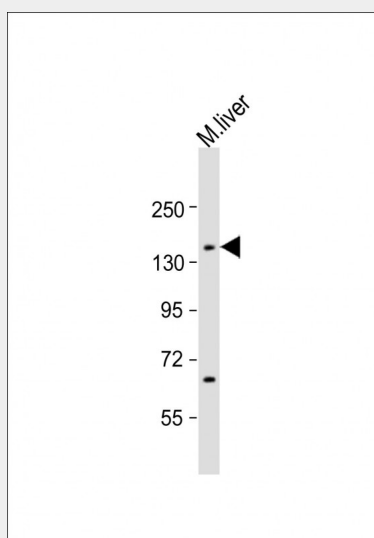
Expressed in brain. Predominantly expressed in cerebral cortex, thalamus, the cerebellum and hippocampal formation (at protein level).

### Mouse Lmtk3 Antibody (Center) - Protocols

Provided below are standard protocols that you may find useful for product applications.

- [Western Blot](#)
- [Blocking Peptides](#)
- [Dot Blot](#)
- [Immunohistochemistry](#)
- [Immunofluorescence](#)
- [Immunoprecipitation](#)
- [Flow Cytometry](#)
- [Cell Culture](#)

### Mouse Lmtk3 Antibody (Center) - Images



Anti-Lmtk3 Antibody (Center) at 1:2000 dilution + mouse liver lysate Lysates/proteins at 20 µg per lane. Secondary Goat Anti-Rabbit IgG, (H+L), Peroxidase conjugated at 1/10000 dilution. Predicted band size : 151 kDa. Blocking/Dilution buffer: 5% NFDM/TBST.

### Mouse Lmtk3 Antibody (Center) - References

Tomomura M.,et al.Neuroscience 148:510-521(2007).

Trinidad J.C.,et al.Mol. Cell. Proteomics 5:914-922(2006).  
Munton R.P.,et al.Mol. Cell. Proteomics 6:283-293(2007).