

NDUFA1 Antibody (Center)
Purified Rabbit Polyclonal Antibody (Pab)
Catalog # AP21705c**Specification**

NDUFA1 Antibody (Center) - Product Information

Application	WB,E
Primary Accession	O15239
Reactivity	Human, Mouse
Host	Rabbit
Clonality	polyclonal
Isotype	Rabbit IgG
Calculated MW	8072

NDUFA1 Antibody (Center) - Additional Information**Gene ID** 4694**Other Names**

NADH dehydrogenase [ubiquinone] 1 alpha subcomplex subunit 1, Complex I-MWFE, CI-MWFE, NADH-ubiquinone oxidoreductase MWFE subunit, NDUFA1

Target/Specificity

This NDUFA1 antibody is generated from a rabbit immunized with a KLH conjugated synthetic peptide between 26-59 amino acids from the Central region of human NDUFA1.

Dilution

WB~~1:2000

E~~Use at an assay dependent concentration.

Format

Purified polyclonal antibody supplied in PBS with 0.09% (W/V) sodium azide. This antibody is purified through a protein A column, followed by peptide affinity purification.

Storage

Maintain refrigerated at 2-8°C for up to 2 weeks. For long term storage store at -20°C in small aliquots to prevent freeze-thaw cycles.

Precautions

NDUFA1 Antibody (Center) is for research use only and not for use in diagnostic or therapeutic procedures.

NDUFA1 Antibody (Center) - Protein Information**Name** NDUFA1

Function Accessory subunit of the mitochondrial membrane respiratory chain NADH dehydrogenase (Complex I), that is believed not to be involved in catalysis. Complex I functions in

the transfer of electrons from NADH to the respiratory chain. The immediate electron acceptor for the enzyme is believed to be ubiquinone.

Cellular Location

Mitochondrion inner membrane; Single-pass membrane protein; Matrix side

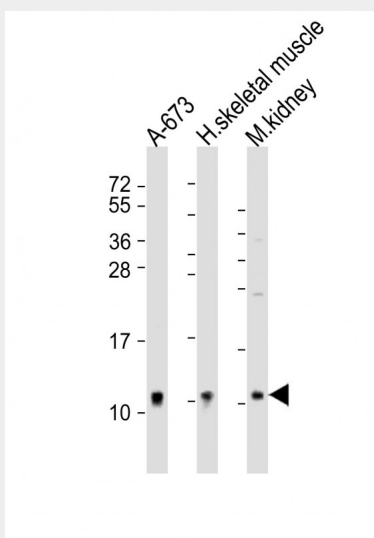
Tissue Location

Primarily expressed in heart and skeletal muscle.

NDUFA1 Antibody (Center) - Protocols

Provided below are standard protocols that you may find useful for product applications.

- [Western Blot](#)
- [Blocking Peptides](#)
- [Dot Blot](#)
- [Immunohistochemistry](#)
- [Immunofluorescence](#)
- [Immunoprecipitation](#)
- [Flow Cytometry](#)
- [Cell Culture](#)

NDUFA1 Antibody (Center) - Images

All lanes : Anti-NDUFA1 Antibody (Center) at 1:2000 dilution Lane 1: A-673 whole cell lysate Lane 2: human skeletal muscle lysate Lane 3: mouse kidney lysate Lysates/proteins at 20 µg per lane. Secondary Goat Anti-Rabbit IgG, (H+L), Peroxidase conjugated at 1/10000 dilution. Predicted band size : 8 kDa Blocking/Dilution buffer: 5% NFDM/TBST.

NDUFA1 Antibody (Center) - Background

Accessory subunit of the mitochondrial membrane respiratory chain NADH dehydrogenase (Complex I), that is believed not to be involved in catalysis. Complex I functions in the transfer of electrons from NADH to the respiratory chain. The immediate electron acceptor for the enzyme is believed to be ubiquinone.

NDUFA1 Antibody (Center) - References

Zhuchenko O., et al. Genomics 37:281-288(1996).
Frattoni A., et al. Gene 192:291-298(1997).
Zhuchenko O.P., et al. Submitted (APR-1996) to the EMBL/GenBank/DDBJ databases.
Murray J., et al. J. Biol. Chem. 278:13619-13622(2003).
Sjoeblom T., et al. Science 314:268-274(2006).