

UBCH9 Antibody (N-term)
Purified Rabbit Polyclonal Antibody (Pab)
Catalog # AP2170a**Specification**

UBCH9 Antibody (N-term) - Product Information

Application	IHC-P, WB,E
Primary Accession	Q969T4
Other Accession	P52483 , Q2T9X7
Reactivity	Human, Mouse
Predicted	Bovine
Host	Rabbit
Clonality	Polyclonal
Isotype	Rabbit IgG
Calculated MW	22913
Antigen Region	10-40

UBCH9 Antibody (N-term) - Additional Information**Gene ID** 10477**Other Names**

Ubiquitin-conjugating enzyme E2 E3, Ubch9, Ubiquitin carrier protein E3, Ubiquitin-conjugating enzyme E2-23 kDa, Ubiquitin-protein ligase E3, UBE2E3, UBCE4, UBCH9

Target/Specificity

This UBCH9 antibody is generated from rabbits immunized with a KLH conjugated synthetic peptide between 10-40 amino acids from the N-terminal region of human UBCH9.

Dilution

IHC-P~~1:50~100

WB~~1:1000

E~~Use at an assay dependent concentration.

Format

Purified polyclonal antibody supplied in PBS with 0.09% (W/V) sodium azide. This antibody is prepared by Saturated Ammonium Sulfate (SAS) precipitation followed by dialysis against PBS.

Storage

Maintain refrigerated at 2-8°C for up to 2 weeks. For long term storage store at -20°C in small aliquots to prevent freeze-thaw cycles.

Precautions

UBCH9 Antibody (N-term) is for research use only and not for use in diagnostic or therapeutic procedures.

UBCH9 Antibody (N-term) - Protein Information

Name UBE2E3 ([HGNC:12479](#))

Synonyms UBCE4, UBCH9

Function Accepts ubiquitin from the E1 complex and catalyzes its covalent attachment to other proteins. In vitro catalyzes 'Lys-11'- and 'Lys-48'-, as well as 'Lys-63'-linked polyubiquitination. Participates in the regulation of transepithelial sodium transport in renal cells.

Cellular Location

Nucleus. Cytoplasm. Note=Shuttles between the nucleus and cytoplasm in a IPO11-dependent manner

Tissue Location

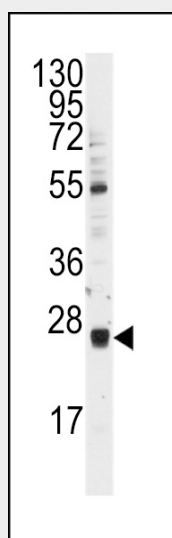
Ubiquitously expressed at low levels. Highly expressed in skeletal muscle.

UBCH9 Antibody (N-term) - Protocols

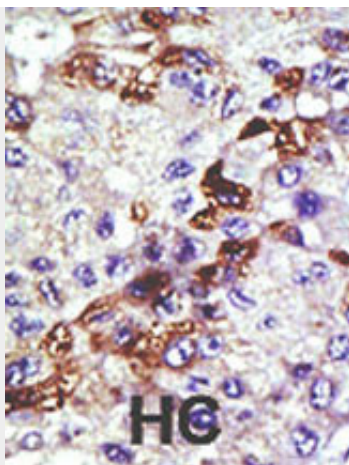
Provided below are standard protocols that you may find useful for product applications.

- [Western Blot](#)
- [Blocking Peptides](#)
- [Dot Blot](#)
- [Immunohistochemistry](#)
- [Immunofluorescence](#)
- [Immunoprecipitation](#)
- [Flow Cytometry](#)
- [Cell Culture](#)

UBCH9 Antibody (N-term) - Images



Western blot analysis of anti-UBCH9 Antibody (N-term) (Cat.#AP2170a) in Y79 cell line lysates (35ug/lane). UBCH9 (arrow) was detected using the purified Pab.



Formalin-fixed and paraffin-embedded human cancer tissue reacted with the primary antibody, which was peroxidase-conjugated to the secondary antibody, followed by AEC staining. This data demonstrates the use of this antibody for immunohistochemistry; clinical relevance has not been evaluated. BC = breast carcinoma; HC = hepatocarcinoma.

UBCH9 Antibody (N-term) - Background

The modification of proteins with ubiquitin is an important cellular mechanism for targeting abnormal or short-lived proteins for degradation. Ubiquitination involves at least three classes of enzymes: ubiquitin-activating enzymes, or E1s, ubiquitin-conjugating enzymes, or E2s, and ubiquitin-protein ligases, or E3s. UBCH9 is a member of the E2 ubiquitin-conjugating enzyme family. The encoded protein shares 100% sequence identity with the mouse and rat counterparts, which indicates that this enzyme is highly conserved in eukaryotes. Two alternatively spliced transcript variants encoding the same protein have been found.

UBCH9 Antibody (N-term) - References

Ito, K., et al., Cytogenet. Cell Genet. 84 (1-2), 99-104 (1999).