

NACA2 Antibody (N-Term)
Purified Rabbit Polyclonal Antibody (Pab)
Catalog # AP21718a**Specification**

NACA2 Antibody (N-Term) - Product Information

Application	WB,E
Primary Accession	Q9H009
Reactivity	Human
Host	Rabbit
Clonality	polyclonal
Isotype	Rabbit IgG
Calculated MW	23223
Antigen Region	36-69

NACA2 Antibody (N-Term) - Additional Information**Gene ID** 342538**Other Names**

Nascent polypeptide-associated complex subunit alpha-2, Alpha-NAC-like, Hom s 201, Nascent polypeptide-associated complex subunit alpha-like, NAC-alpha-like, NACA2, NACAL

Target/Specificity

This NACA2 antibody is generated from a rabbit immunized with a KLH conjugated synthetic peptide between 36-69 amino acids from human NACA2.

Dilution

WB~~~1:2000

E~~~Use at an assay dependent concentration.

Format

Purified polyclonal antibody supplied in PBS with 0.09% (W/V) sodium azide. This antibody is purified through a protein A column, followed by peptide affinity purification.

Storage

Maintain refrigerated at 2-8°C for up to 2 weeks. For long term storage store at -20°C in small aliquots to prevent freeze-thaw cycles.

Precautions

NACA2 Antibody (N-Term) is for research use only and not for use in diagnostic or therapeutic procedures.

NACA2 Antibody (N-Term) - Protein Information**Name** NACA2**Synonyms** NACAL

Function Prevents inappropriate targeting of non-secretory polypeptides to the endoplasmic reticulum (ER). Binds to nascent polypeptide chains as they emerge from the ribosome and blocks their interaction with the signal recognition particle (SRP), which normally targets nascent secretory peptides to the ER. Also reduces the inherent affinity of ribosomes for protein translocation sites in the ER membrane (M sites) (By similarity).

Cellular Location

Cytoplasm. Nucleus.

Tissue Location

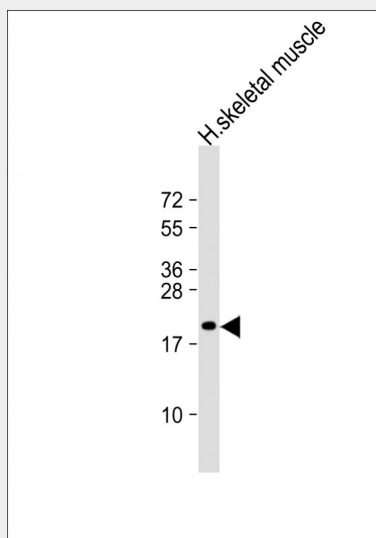
Expressed specifically in testis and skeletal muscle.

NACA2 Antibody (N-Term) - Protocols

Provided below are standard protocols that you may find useful for product applications.

- [Western Blot](#)
- [Blocking Peptides](#)
- [Dot Blot](#)
- [Immunohistochemistry](#)
- [Immunofluorescence](#)
- [Immunoprecipitation](#)
- [Flow Cytometry](#)
- [Cell Culture](#)

NACA2 Antibody (N-Term) - Images



Anti-NACA2 Antibody (N-Term) at 1:2000 dilution + human skeletal muscle lysate
Lysates/proteins at 20 µg per lane. Secondary Goat Anti-Rabbit IgG, (H+L), Peroxidase conjugated
at 1/10000 dilution. Predicted band size : 23 kDa Blocking/Dilution buffer: 5% NFDM/TBST.

NACA2 Antibody (N-Term) - Background

Prevents inappropriate targeting of non-secretory polypeptides to the endoplasmic reticulum (ER). Binds to nascent polypeptide chains as they emerge from the ribosome and blocks their interaction with the signal recognition particle (SRP), which normally targets nascent secretory peptides to the ER. Also reduces the inherent affinity of ribosomes for protein translocation sites in the ER

membrane (M sites) (By similarity).

NACA2 Antibody (N-Term) - References

Mossabeb R.,et al.J. Invest. Dermatol. 119:820-829(2002).

Marques A.C.,et al.PLoS Biol. 3:E357-E357(2005).

Mayya V.,et al.Sci. Signal. 2:RA46-RA46(2009).