

**SAG Antibody (C-Term)**  
**Purified Rabbit Polyclonal Antibody (Pab)**  
**Catalog # AP21724b****Specification**

---

**SAG Antibody (C-Term) - Product Information**

Application	WB,E
Primary Accession	<a href="#">P10523</a>
Reactivity	Mouse
Host	Rabbit
Clonality	polyclonal
Isotype	Rabbit IgG
Calculated MW	45120
Antigen Region	273-307

**SAG Antibody (C-Term) - Additional Information****Gene ID** 6295**Other Names**

S-arrestin, 48 kDa protein, Retinal S-antigen, S-AG, Rod photoreceptor arrestin, SAG

**Target/Specificity**

This SAG antibody is generated from a rabbit immunized with a KLH conjugated synthetic peptide between 273-307 amino acids from the human SAG.

**Dilution**

WB~~1:2000

E~~Use at an assay dependent concentration.

**Format**

Purified polyclonal antibody supplied in PBS with 0.09% (W/V) sodium azide. This antibody is purified through a protein A column, followed by peptide affinity purification.

**Storage**

Maintain refrigerated at 2-8°C for up to 2 weeks. For long term storage store at -20°C in small aliquots to prevent freeze-thaw cycles.

**Precautions**

SAG Antibody (C-Term) is for research use only and not for use in diagnostic or therapeutic procedures.

**SAG Antibody (C-Term) - Protein Information****Name** SAG

**Function** Binds to photoactivated, phosphorylated RHO and terminates RHO signaling via G-proteins by competing with G-proteins for the same binding site on RHO (By similarity). May play

a role in preventing light-dependent degeneration of retinal photoreceptor cells (PubMed:[9565049](#)).

#### Cellular Location

Cell projection, cilium, photoreceptor outer segment. Membrane {ECO:0000250|UniProtKB:P20443}; Peripheral membrane protein {ECO:0000250|UniProtKB:P20443}. Note=Highly expressed in photoreceptor outer segments in light-exposed retina. Evenly distributed throughout rod photoreceptor cells in dark-adapted retina (By similarity) Predominantly detected at the proximal region of photoreceptor outer segments, near disk membranes (PubMed:3720866) {ECO:0000250|UniProtKB:P08168, ECO:0000269|PubMed:3720866}

#### Tissue Location

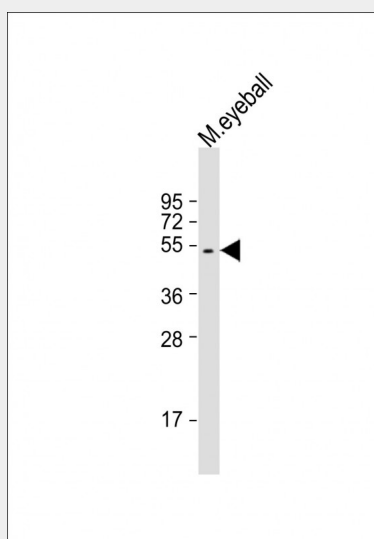
Detected in retina, in the proximal portion of the outer segment of rod photoreceptor cells (at protein level)

### SAG Antibody (C-Term) - Protocols

Provided below are standard protocols that you may find useful for product applications.

- [Western Blot](#)
- [Blocking Peptides](#)
- [Dot Blot](#)
- [Immunohistochemistry](#)
- [Immunofluorescence](#)
- [Immunoprecipitation](#)
- [Flow Cytometry](#)
- [Cell Culture](#)

### SAG Antibody (C-Term) - Images



Anti-SAG Antibody (C-Term) at 1:2000 dilution + mouse eyeball lysate Lysates/proteins at 20 µg per lane. Secondary Goat Anti-Rabbit IgG, (H+L), Peroxidase conjugated at 1/10000 dilution. Predicted band size : 45 kDa Blocking/Dilution buffer: 5% NFDm/TBST.

### SAG Antibody (C-Term) - Background

Arrestin is one of the major proteins of the ros (retinal rod outer segments); it binds to photoactivated- phosphorylated rhodopsin, thereby apparently preventing the transducin-mediated activation of phosphodiesterase.

#### **SAG Antibody (C-Term) - References**

Yamaki K.,et al.FEBS Lett. 234:39-43(1988).  
Yamaki K.,et al.FEBS Lett. 236:507-507(1988).  
Yamamoto S.,et al.Nat. Genet. 15:175-178(1997).  
Hillier L.W.,et al.Nature 434:724-731(2005).  
Roni V.,et al.BMC Genomics 8:42-42(2007).