

RLBP1 Antibody (C-term)
Purified Rabbit Polyclonal Antibody (Pab)
Catalog # AP21727b

Specification

RLBP1 Antibody (C-term) - Product Information

Application	WB,E
Primary Accession	P12271
Reactivity	Mouse
Host	Rabbit
Clonality	polyclonal
Isotype	Rabbit IgG

RLBP1 Antibody (C-term) - Additional Information

Gene ID 6017

Other Names

Retinaldehyde-binding protein 1, Cellular retinaldehyde-binding protein, RLBP1, CRALBP

Target/Specificity

This RLBP1 antibody is generated from a rabbit immunized with a KLH conjugated synthetic peptide between 255-288 amino acids from the C-terminal region of human RLBP1.

Dilution

WB~~1:2000

E~~Use at an assay dependent concentration.

Format

Purified polyclonal antibody supplied in PBS with 0.09% (W/V) sodium azide. This antibody is purified through a protein A column, followed by peptide affinity purification.

Storage

Maintain refrigerated at 2-8°C for up to 2 weeks. For long term storage store at -20°C in small aliquots to prevent freeze-thaw cycles.

Precautions

RLBP1 Antibody (C-term) is for research use only and not for use in diagnostic or therapeutic procedures.

RLBP1 Antibody (C-term) - Protein Information

Name RLBP1

Synonyms CRALBP

Function Soluble retinoid carrier essential the proper function of both rod and cone photoreceptors. Participates in the regeneration of active 11-cis-retinol and 11-cis-retinaldehyde,

from the inactive 11- trans products of the rhodopsin photocycle and in the de novo synthesis of these retinoids from 11-trans metabolic precursors. The cycling of retinoids between photoreceptor and adjacent pigment epithelium cells is known as the 'visual cycle'.

Cellular Location

Cytoplasm.

Tissue Location

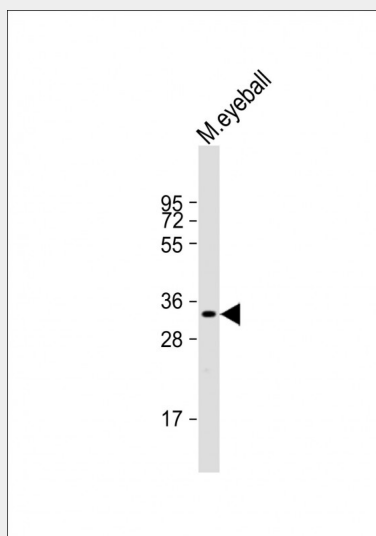
Retina and pineal gland. Not present in photoreceptor cells but is expressed abundantly in the adjacent retinal pigment epithelium (RPE) and in the Mueller glial cells of the retina

RLBP1 Antibody (C-term) - Protocols

Provided below are standard protocols that you may find useful for product applications.

- [Western Blot](#)
- [Blocking Peptides](#)
- [Dot Blot](#)
- [Immunohistochemistry](#)
- [Immunofluorescence](#)
- [Immunoprecipitation](#)
- [Flow Cytometry](#)
- [Cell Culture](#)

RLBP1 Antibody (C-term) - Images



Anti-RLBP1 Antibody (C-term) at 1:2000 dilution + mouse eyeball lysate Lysates/proteins at 20 µg per lane. Secondary Goat Anti-Rabbit IgG, (H+L), Peroxidase conjugated at 1/10000 dilution. Predicted band size : 36 kDa Blocking/Dilution buffer: 5% NFDm/TBST.

RLBP1 Antibody (C-term) - Background

Soluble retinoid carrier essential the proper function of both rod and cone photoreceptors. Participates in the regeneration of active 11-cis-retinol and 11-cis-retinaldehyde, from the inactive 11-trans products of the rhodopsin photocycle and in the de novo synthesis of these retinoids from 11-trans metabolic precursors. The cycling of retinoids between photoreceptor and adjacent pigment epithelium cells is known as the 'visual cycle'.

RLBP1 Antibody (C-term) - References

Crabb J.W.,et al.J. Biol. Chem. 263:18688-18692(1988).
Intres R.,et al.J. Biol. Chem. 269:25411-25418(1994).
Ota T.,et al.Nat. Genet. 36:40-45(2004).
Mural R.J.,et al.Submitted (JUL-2005) to the EMBL/GenBank/DDBJ databases.
Crabb J.W.,et al.Protein Sci. 7:746-757(1998).