

(DANRE) rab11fip4a Antibody (Center)
Purified Rabbit Polyclonal Antibody (Pab)
Catalog # AP21730c

Specification

(DANRE) rab11fip4a Antibody (Center) - Product Information

Application	WB,E
Primary Accession	Q3LGD4
Reactivity	Zebrafish
Host	Rabbit
Clonality	polyclonal
Isotype	Rabbit IgG
Calculated MW	70946
Antigen Region	183-216

(DANRE) rab11fip4a Antibody (Center) - Additional Information

Gene ID 436806

Other Names

Rab11 family-interacting protein 4A, FIP4-Rab11, Rab11-FIP4-A, zRab11-FIP4-A, rab11fip4a, rab11fip4

Target/Specificity

This (DANRE) rab11fip4a antibody is generated from a rabbit immunized with a KLH conjugated synthetic peptide between 183-216 amino acids from the Central region of DANRE rab11fip4a.

Dilution

WB~~1:1000

E~~Use at an assay dependent concentration.

Format

Purified polyclonal antibody supplied in PBS with 0.09% (W/V) sodium azide. This antibody is purified through a protein A column, followed by peptide affinity purification.

Storage

Maintain refrigerated at 2-8°C for up to 2 weeks. For long term storage store at -20°C in small aliquots to prevent freeze-thaw cycles.

Precautions

(DANRE) rab11fip4a Antibody (Center) is for research use only and not for use in diagnostic or therapeutic procedures.

(DANRE) rab11fip4a Antibody (Center) - Protein Information

Name rab11fip4a

Synonyms rab11fip4

Function Acts as a regulator of endocytic traffic by participating in membrane delivery. Required for the abscission step in cytokinesis, possibly by acting as an 'address tag' delivering recycling endosome membranes to the cleavage furrow during late cytokinesis (By similarity). May play a role in differentiation during retinal development.

Cellular Location

Recycling endosome membrane; Peripheral membrane protein. Cleavage furrow. Midbody. Cytoplasmic vesicle. Note=Recruited to the cleavage furrow and the midbody during cytokinesis.

Tissue Location

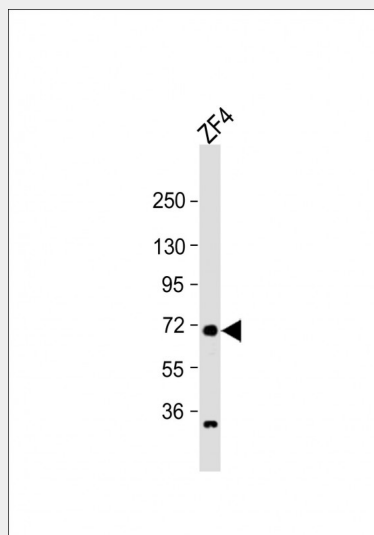
Isoform 1 is predominantly expressed in neural tissues. Isoform B is expressed ubiquitously. In the developing retina, it is expressed in progenitors throughout the retina at early stages and becomes restricted to the ganglion cell layer and ciliary marginal zone as differentiation proceeds.

(DANRE) rab11fip4a Antibody (Center) - Protocols

Provided below are standard protocols that you may find useful for product applications.

- [Western Blot](#)
- [Blocking Peptides](#)
- [Dot Blot](#)
- [Immunohistochemistry](#)
- [Immunofluorescence](#)
- [Immunoprecipitation](#)
- [Flow Cytometry](#)
- [Cell Culture](#)

(DANRE) rab11fip4a Antibody (Center) - Images



Anti-rab11fip4a Antibody (Center) at 1:1000 dilution + ZF4 whole cell lysate Lysates/proteins at 20 µg per lane. Secondary Goat Anti-Rabbit IgG, (H+L), Peroxidase conjugated at 1/10000 dilution. Predicted band size : 71 kDa Blocking/Dilution buffer: 5% NFDM/TBST.

(DANRE) rab11fip4a Antibody (Center) - Background

Acts as a regulator of endocytic traffic by participating in membrane delivery. Required for the abscission step in cytokinesis, possibly by acting as an 'address tag' delivering recycling endosome

membranes to the cleavage furrow during late cytokinesis (By similarity). May play a role in differentiation during retinal development.

(DANRE) rab11fip4a Antibody (Center) - References

Muto A.,et al.Dev. Biol. 292:90-102(2006).