

PDE1A Antibody (N-Term)
Purified Rabbit Polyclonal Antibody (Pab)
Catalog # AP21735a

Specification

PDE1A Antibody (N-Term) - Product Information

Application	WB,E
Primary Accession	P54750
Reactivity	Mouse
Host	Rabbit
Clonality	polyclonal
Isotype	Rabbit IgG
Calculated MW	61252

PDE1A Antibody (N-Term) - Additional Information

Gene ID 5136

Other Names

Calcium/calmodulin-dependent 3', 5'-cyclic nucleotide phosphodiesterase 1A, Cam-PDE 1A, 61 kDa
Cam-PDE, hCam-1, PDE1A

Target/Specificity

This PDE1A antibody is generated from a rabbit immunized with a KLH conjugated synthetic peptide between 23-57 amino acids from human PDE1A.

Dilution

WB~~1:2000

E~~Use at an assay dependent concentration.

Format

Purified polyclonal antibody supplied in PBS with 0.09% (W/V) sodium azide. This antibody is purified through a protein A column, followed by peptide affinity purification.

Storage

Maintain refrigerated at 2-8°C for up to 2 weeks. For long term storage store at -20°C in small aliquots to prevent freeze-thaw cycles.

Precautions

PDE1A Antibody (N-Term) is for research use only and not for use in diagnostic or therapeutic procedures.

PDE1A Antibody (N-Term) - Protein Information

Name PDE1A ([HGNC:8774](#))

Function Calcium/calmodulin-dependent cyclic nucleotide phosphodiesterase with a dual specificity for the second messengers cGMP and cAMP, which are key regulators of many

important physiological processes. Has a higher efficiency with cGMP compared to cAMP.

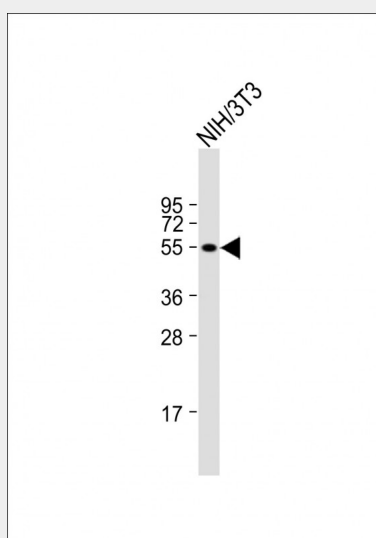
Tissue Location

Several tissues, including brain, kidney, testes and heart

PDE1A Antibody (N-Term) - Protocols

Provided below are standard protocols that you may find useful for product applications.

- [Western Blot](#)
- [Blocking Peptides](#)
- [Dot Blot](#)
- [Immunohistochemistry](#)
- [Immunofluorescence](#)
- [Immunoprecipitation](#)
- [Flow Cytometry](#)
- [Cell Culture](#)

PDE1A Antibody (N-Term) - Images

Anti-PDE1A Antibody (N-Term) at 1:2000 dilution + NIH/3T3 whole cell lysate Lysates/proteins at 20 µg per lane. Secondary Goat Anti-Rabbit IgG, (H+L), Peroxidase conjugated at 1/10000 dilution. Predicted band size : 61 kDa Blocking/Dilution buffer: 5% NFDM/TBST.

PDE1A Antibody (N-Term) - Background

Cyclic nucleotide phosphodiesterase with a dual- specificity for the second messengers cAMP and cGMP, which are key regulators of many important physiological processes. Has a higher affinity for cGMP than for cAMP.

PDE1A Antibody (N-Term) - References

Loughney K.,et al.J. Biol. Chem. 271:796-806(1996).
Michibata H.,et al.Biochim. Biophys. Acta 1517:278-287(2001).
Fidock M.D.,et al.Cell. Signal. 14:53-60(2002).
Bechtel S.,et al.BMC Genomics 8:399-399(2007).
Mural R.J.,et al.Submitted (SEP-2005) to the EMBL/GenBank/DDBJ databases.

