

DANRE clvs2 Antibody (C-term)
Purified Rabbit Polyclonal Antibody (Pab)
Catalog # AP21737b

Specification

DANRE clvs2 Antibody (C-term) - Product Information

Application	WB,E
Primary Accession	Q5SPP0
Reactivity	Zebrafish
Host	Rabbit
Clonality	polyclonal
Isotype	Rabbit IgG
Calculated MW	38120
Antigen Region	262-295

DANRE clvs2 Antibody (C-term) - Additional Information

Gene ID 566769

Other Names

Clavesin-2, Retinaldehyde-binding protein 1-like 2, clvs2, rlbp1l2

Target/Specificity

This DANRE clvs2 antibody is generated from a rabbit immunized with a KLH conjugated synthetic peptide between 262-295 amino acids from the C-terminal region of DANRE clvs2.

Dilution

WB~~1:2000

E~~Use at an assay dependent concentration.

Format

Purified polyclonal antibody supplied in PBS with 0.09% (W/V) sodium azide. This antibody is purified through a protein A column, followed by peptide affinity purification.

Storage

Maintain refrigerated at 2-8°C for up to 2 weeks. For long term storage store at -20°C in small aliquots to prevent freeze-thaw cycles.

Precautions

DANRE clvs2 Antibody (C-term) is for research use only and not for use in diagnostic or therapeutic procedures.

DANRE clvs2 Antibody (C-term) - Protein Information

Name clvs2

Synonyms rlbp1l2

Function Required for normal morphology of late endosomes and/or lysosomes in neurons. Binds phosphatidylinositol 3,5-bisphosphate (PtdIns(3,5)P₂) (By similarity).

Cellular Location

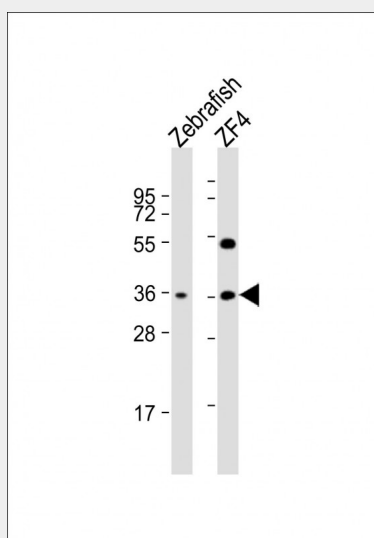
Golgi apparatus, trans-Golgi network membrane; Peripheral membrane protein. Early endosome membrane; Peripheral membrane protein. Cytoplasmic vesicle, clathrin-coated vesicle

DANRE clvs2 Antibody (C-term) - Protocols

Provided below are standard protocols that you may find useful for product applications.

- [Western Blot](#)
- [Blocking Peptides](#)
- [Dot Blot](#)
- [Immunohistochemistry](#)
- [Immunofluorescence](#)
- [Immunoprecipitation](#)
- [Flow Cytometry](#)
- [Cell Culture](#)

DANRE clvs2 Antibody (C-term) - Images



All lanes : Anti-DANRE clvs2 Antibody (C-term) at 1:2000 dilution Lane 1: Zebrafish whole cell lysate Lane 2: ZF4 whole cell lysate Lysates/proteins at 20 µg per lane. Secondary Goat Anti-Rabbit IgG, (H+L), Peroxidase conjugated at 1/10000 dilution. Predicted band size : 38 kDa Blocking/Dilution buffer: 5% NFDm/TBST.

DANRE clvs2 Antibody (C-term) - Background

Required for normal morphology of late endosomes and/or lysosomes in neurons. Binds phosphatidylinositol 3,5-bisphosphate (PtdIns(3,5)P₂) (By similarity).

DANRE clvs2 Antibody (C-term) - References

Howe K., et al. Nature 496:498-503(2013).