

COX6C Antibody (C-Term)
Purified Rabbit Polyclonal Antibody (Pab)
Catalog # AP21750b**Specification**

COX6C Antibody (C-Term) - Product Information

| | |
|-------------------|------------------------|
| Application | WB,E |
| Primary Accession | P09669 |
| Reactivity | Human, Mouse |
| Host | Rabbit |
| Clonality | polyclonal |
| Isotype | Rabbit IgG |
| Calculated MW | 8781 |

COX6C Antibody (C-Term) - Additional Information**Gene ID** 1345**Other Names**

Cytochrome c oxidase subunit 6C, Cytochrome c oxidase polypeptide VIc, COX6C

Target/Specificity

This COX6C antibody is generated from a rabbit immunized with a KLH conjugated synthetic peptide between 34-67 amino acids from human COX6C.

Dilution

WB~~1:2000

E~~Use at an assay dependent concentration.

Format

Purified polyclonal antibody supplied in PBS with 0.09% (W/V) sodium azide. This antibody is purified through a protein A column, followed by peptide affinity purification.

Storage

Maintain refrigerated at 2-8°C for up to 2 weeks. For long term storage store at -20°C in small aliquots to prevent freeze-thaw cycles.

Precautions

COX6C Antibody (C-Term) is for research use only and not for use in diagnostic or therapeutic procedures.

COX6C Antibody (C-Term) - Protein Information**Name** COX6C

Function Component of the cytochrome c oxidase, the last enzyme in the mitochondrial electron transport chain which drives oxidative phosphorylation. The respiratory chain contains 3 multisubunit complexes succinate dehydrogenase (complex II, CII), ubiquinol- cytochrome c

oxidoreductase (cytochrome b-c1 complex, complex III, CIII) and cytochrome c oxidase (complex IV, CIV), that cooperate to transfer electrons derived from NADH and succinate to molecular oxygen, creating an electrochemical gradient over the inner membrane that drives transmembrane transport and the ATP synthase. Cytochrome c oxidase is the component of the respiratory chain that catalyzes the reduction of oxygen to water. Electrons originating from reduced cytochrome c in the intermembrane space (IMS) are transferred via the dinuclear copper A center (CU(A)) of subunit 2 and heme A of subunit 1 to the active site in subunit 1, a binuclear center (BNC) formed by heme A3 and copper B (CU(B)). The BNC reduces molecular oxygen to 2 water molecules using 4 electrons from cytochrome c in the IMS and 4 protons from the mitochondrial matrix.

Cellular Location

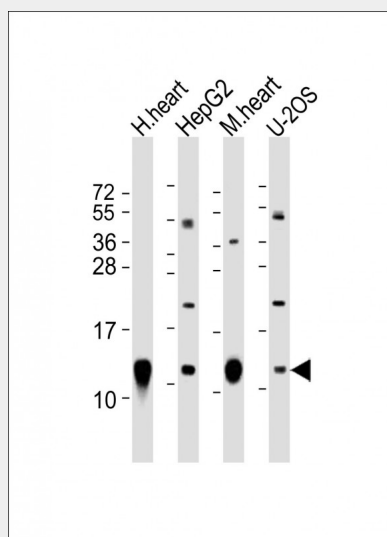
Mitochondrion inner membrane; Single-pass membrane protein

COX6C Antibody (C-Term) - Protocols

Provided below are standard protocols that you may find useful for product applications.

- [Western Blot](#)
- [Blocking Peptides](#)
- [Dot Blot](#)
- [Immunohistochemistry](#)
- [Immunofluorescence](#)
- [Immunoprecipitation](#)
- [Flow Cytometry](#)
- [Cell Culture](#)

COX6C Antibody (C-Term) - Images



All lanes : Anti-COX6C Antibody (C-Term) at 1:2000 dilution Lane 1: human heart lysate Lane 2: HepG2 whole cell lysate Lane 3: mouse heart lysate Lane 4: U-2OS whole cell lysate Lysates/proteins at 20 µg per lane. Secondary Goat Anti-Rabbit IgG, (H+L), Peroxidase conjugated at 1/10000 dilution. Predicted band size : 11 kDa Blocking/Dilution buffer: 5% NFDM/TBST.

COX6C Antibody (C-Term) - Background

This protein is one of the nuclear-coded polypeptide chains of cytochrome c oxidase, the terminal

oxidase in mitochondrial electron transport.

COX6C Antibody (C-Term) - References

Otsuka M.,et al.Nucleic Acids Res. 16:10916-10916(1988).
Ohta S.,et al.Submitted (FEB-1996) to the EMBL/GenBank/DDBJ databases.
Hofmann S.,et al.Cytogenet. Cell Genet. 83:226-227(1998).
Kalnine N.,et al.Submitted (MAY-2003) to the EMBL/GenBank/DDBJ databases.
Ota T.,et al.Nat. Genet. 36:40-45(2004).