

CREB3L3 Antibody (Center)
Purified Rabbit Polyclonal Antibody (Pab)
Catalog # AP21763c**Specification**

CREB3L3 Antibody (Center) - Product Information

Application	WB,E
Primary Accession	Q68CJ9
Reactivity	Human
Host	Rabbit
Clonality	polyclonal
Isotype	Rabbit IgG

CREB3L3 Antibody (Center) - Additional Information**Gene ID** 84699**Other Names**

Cyclic AMP-responsive element-binding protein 3-like protein 3, cAMP-responsive element-binding protein 3-like protein 3, Transcription factor CREB-H, Processed cyclic AMP-responsive element-binding protein 3-like protein 3, CREB3L3, CREBH

Target/Specificity

This CREB3L3 antibody is generated from a rabbit immunized with a KLH conjugated synthetic peptide between 244-274 amino acids of human CREB3L3.

Dilution

WB~~1:1000-1:2000

E~~Use at an assay dependent concentration.

Format

Purified polyclonal antibody supplied in PBS with 0.09% (W/V) sodium azide. This antibody is purified through a protein A column, followed by peptide affinity purification.

Storage

Maintain refrigerated at 2-8°C for up to 2 weeks. For long term storage store at -20°C in small aliquots to prevent freeze-thaw cycles.

Precautions

CREB3L3 Antibody (Center) is for research use only and not for use in diagnostic or therapeutic procedures.

CREB3L3 Antibody (Center) - Protein Information**Name** CREB3L3**Synonyms** CREBH

Function Transcription factor that may act during endoplasmic reticulum stress by activating unfolded protein response target genes. Activated in response to cAMP stimulation. In vitro, binds to the cAMP response element (CRE) and box-B element. Activates transcription through box-B element. Activates transcription through CRE (By similarity). May function synergistically with ATF6. In acute inflammatory response, may activate expression of acute phase response (APR) genes. May be involved in growth suppression. Regulates FGF21 transcription (By similarity). Plays a crucial role in the regulation of triglyceride metabolism and is required for the maintenance of normal plasma triglyceride concentrations (PubMed:[21666694](#)).

Cellular Location

Endoplasmic reticulum membrane; Single-pass type II membrane protein

Tissue Location

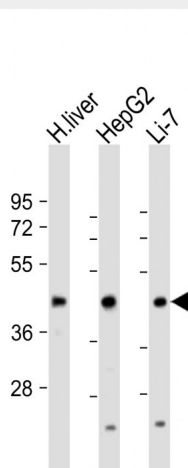
Exclusively expressed in liver. Underexpressed in hepatocellular carcinoma tissues.

CREB3L3 Antibody (Center) - Protocols

Provided below are standard protocols that you may find useful for product applications.

- [Western Blot](#)
- [Blocking Peptides](#)
- [Dot Blot](#)
- [Immunohistochemistry](#)
- [Immunofluorescence](#)
- [Immunoprecipitation](#)
- [Flow Cytometry](#)
- [Cell Culture](#)

CREB3L3 Antibody (Center) - Images



All lanes : Anti-CREB3L3 Antibody (Center) at 1:1000-1:2000 dilution Lane 1: human liver lysate Lane 2: HepG2 whole cell lysate Lane 3: Li-7 whole cell lysate Lysates/proteins at 20 µg per lane. Secondary Goat Anti-Rabbit IgG, (H+L), Peroxidase conjugated at 1/10000 dilution. Predicted band size : 49 kDa Blocking/Dilution buffer: 5% NFDN/TBST.

CREB3L3 Antibody (Center) - Background

Transcription factor that may act during endoplasmic reticulum stress by activating unfolded protein response target genes. Activated in response to cAMP stimulation. In vitro, binds to the cAMP response element (CRE) and box-B element. Activates transcription through box-B element. Activates transcription through CRE (By similarity). Seems to function synergistically with ATF6. In acute inflammatory response, may activate expression of acute phase response (APR) genes. May be involved in growth suppression.

CREB3L3 Antibody (Center) - References

Omori Y.,et al.Nucleic Acids Res. 29:2154-2162(2001).
Yamada S.,et al.Oncogene 23:5901-5911(2004).
Ota T.,et al.Nat. Genet. 36:40-45(2004).
Grimwood J.,et al.Nature 428:529-535(2004).
Mural R.J.,et al.Submitted (SEP-2005) to the EMBL/GenBank/DDBJ databases.