

ATXN2 Antibody (Center)
Purified Rabbit Polyclonal Antibody (Pab)
Catalog # AP21768c**Specification**

ATXN2 Antibody (Center) - Product Information

Application	WB,E
Primary Accession	Q99700
Reactivity	Human
Host	Rabbit
Clonality	polyclonal
Isotype	Rabbit IgG
Calculated MW	140283

ATXN2 Antibody (Center) - Additional Information**Gene ID** 6311**Other Names**

Ataxin-2, Spinocerebellar ataxia type 2 protein, Trinucleotide repeat-containing gene 13 protein, ATXN2, ATX2, SCA2, TNRC13

Target/Specificity

This ATXN2 antibody is generated from a rabbit immunized with a KLH conjugated synthetic peptide between 725-757 amino acids from the Central region of human ATXN2.

Dilution

WB~~1:2000

E~~Use at an assay dependent concentration.

Format

Purified polyclonal antibody supplied in PBS with 0.09% (W/V) sodium azide. This antibody is purified through a protein A column, followed by peptide affinity purification.

Storage

Maintain refrigerated at 2-8°C for up to 2 weeks. For long term storage store at -20°C in small aliquots to prevent freeze-thaw cycles.

Precautions

ATXN2 Antibody (Center) is for research use only and not for use in diagnostic or therapeutic procedures.

ATXN2 Antibody (Center) - Protein Information**Name** ATXN2**Synonyms** ATX2, SCA2, TNRC13

Function Involved in EGFR trafficking, acting as negative regulator of endocytic EGFR internalization at the plasma membrane.

Cellular Location

Cytoplasm.

Tissue Location

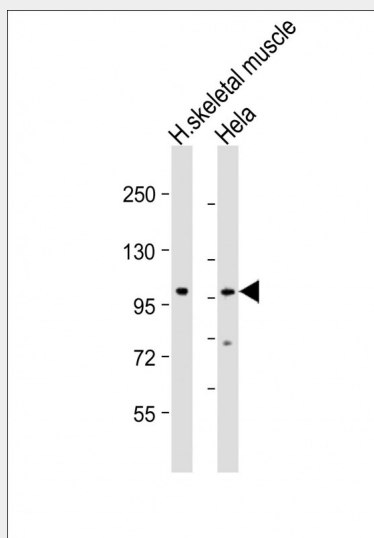
Expressed in the brain, heart, liver, skeletal muscle, pancreas and placenta. Isoform 1 is predominant in the brain and spinal cord. Isoform 4 is more abundant in the cerebellum. In the brain, broadly expressed in the amygdala, caudate nucleus, corpus callosum, hippocampus, hypothalamus, substantia nigra, subthalamic nucleus and thalamus.

ATXN2 Antibody (Center) - Protocols

Provided below are standard protocols that you may find useful for product applications.

- [Western Blot](#)
- [Blocking Peptides](#)
- [Dot Blot](#)
- [Immunohistochemistry](#)
- [Immunofluorescence](#)
- [Immunoprecipitation](#)
- [Flow Cytometry](#)
- [Cell Culture](#)

ATXN2 Antibody (Center) - Images



All lanes : Anti-ATXN2 Antibody (Center) at 1:2000 dilution Lane 1: human skeletal muscle lysate Lane 2: HeLa whole cell lysate Lysates/proteins at 20 µg per lane. Secondary Goat Anti-Rabbit IgG, (H+L), Peroxidase conjugated at 1/10000 dilution. Predicted band size : 140 kDa Blocking/Dilution buffer: 5% NFDM/TBST.

ATXN2 Antibody (Center) - Background

Involved in EGFR trafficking, acting as negative regulator of endocytic EGFR internalization at the plasma membrane.

ATXN2 Antibody (Center) - References

Pulst S.-M.,et al.Nat. Genet. 14:269-276(1996).
Sanpei K.,et al.Nat. Genet. 14:277-284(1996).
Ota T.,et al.Nat. Genet. 36:40-45(2004).
Scherer S.E.,et al.Nature 440:346-351(2006).
Imbert G.,et al.Nat. Genet. 14:285-291(1996).