

NDUFS6 Antibody (Center)
Purified Rabbit Polyclonal Antibody (Pab)
Catalog # AP21781c

Specification

NDUFS6 Antibody (Center) - Product Information

| | |
|-------------------|------------------------|
| Application | WB,E |
| Primary Accession | O75380 |
| Reactivity | Human, Mouse |
| Host | Rabbit |
| Clonality | polyclonal |
| Isotype | Rabbit IgG |
| Calculated MW | 13712 |

NDUFS6 Antibody (Center) - Additional Information

Gene ID 4726

Other Names

NADH dehydrogenase [ubiquinone] iron-sulfur protein 6, mitochondrial, Complex I-13kD-A, CI-13kD-A, NADH-ubiquinone oxidoreductase 13 kDa-A subunit, NDUFS6

Target/Specificity

This NDUFS6 antibody is generated from a rabbit immunized with a KLH conjugated synthetic peptide between 32-65 amino acids from the Central region of human NDUFS6.

Dilution

WB~~1:2000
E~~Use at an assay dependent concentration.

Format

Purified polyclonal antibody supplied in PBS with 0.09% (W/V) sodium azide. This antibody is purified through a protein A column, followed by peptide affinity purification.

Storage

Maintain refrigerated at 2-8°C for up to 2 weeks. For long term storage store at -20°C in small aliquots to prevent freeze-thaw cycles.

Precautions

NDUFS6 Antibody (Center) is for research use only and not for use in diagnostic or therapeutic procedures.

NDUFS6 Antibody (Center) - Protein Information

Name NDUFS6

Function Accessory subunit of the mitochondrial membrane respiratory chain NADH dehydrogenase (Complex I), that is believed not to be involved in catalysis. Complex I functions in

the transfer of electrons from NADH to the respiratory chain. The immediate electron acceptor for the enzyme is believed to be ubiquinone.

Cellular Location

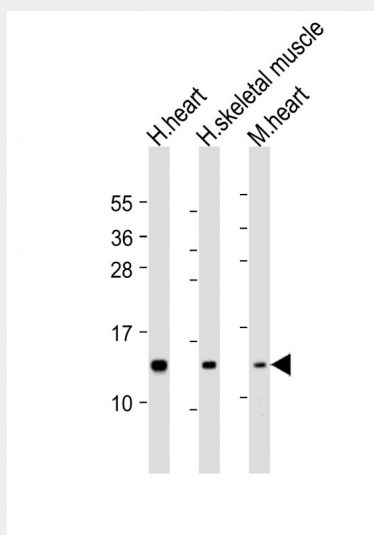
Mitochondrion inner membrane; Peripheral membrane protein; Matrix side

NDUFS6 Antibody (Center) - Protocols

Provided below are standard protocols that you may find useful for product applications.

- [Western Blot](#)
- [Blocking Peptides](#)
- [Dot Blot](#)
- [Immunohistochemistry](#)
- [Immunofluorescence](#)
- [Immunoprecipitation](#)
- [Flow Cytometry](#)
- [Cell Culture](#)

NDUFS6 Antibody (Center) - Images



All lanes : Anti-NDUFS6 Antibody (Center) at 1:2000 dilution Lane 1: human heart lysate Lane 2: human skeletal muscle lysate Lane 3: mouse heart lysate Lysates/proteins at 20 μ g per lane. Secondary Goat Anti-Rabbit IgG, (H+L), Peroxidase conjugated at 1/10000 dilution. Predicted band size : 14 kDa Blocking/Dilution buffer: 5% NFD/MTBST.

NDUFS6 Antibody (Center) - Background

Accessory subunit of the mitochondrial membrane respiratory chain NADH dehydrogenase (Complex I), that is believed not to be involved in catalysis. Complex I functions in the transfer of electrons from NADH to the respiratory chain. The immediate electron acceptor for the enzyme is believed to be ubiquinone.

NDUFS6 Antibody (Center) - References

Loeffen J., et al. *Biochem. Biophys. Res. Commun.* 247:751-758(1998).
Murray J., et al. *J. Biol. Chem.* 278:13619-13622(2003).

Burkard T.R., et al. BMC Syst. Biol. 5:17-17(2011).