

**CSNK2A3 Antibody (C-Term)**  
**Purified Rabbit Polyclonal Antibody (Pab)**  
**Catalog # AP21803b****Specification**

---

**CSNK2A3 Antibody (C-Term) - Product Information**

Application	WB,E
Primary Accession	<a href="#">Q8NEV1</a>
Reactivity	Human
Host	Rabbit
Clonality	polyclonal
Isotype	Rabbit IgG
Calculated MW	45220
Antigen Region	296-330

**CSNK2A3 Antibody (C-Term) - Additional Information****Gene ID** 283106**Other Names**

Casein kinase II subunit alpha 3, CK II alpha 3, Casein kinase II alpha 1 polypeptide pseudogene, CSNK2A3, CSNK2A1P

**Target/Specificity**

This CSNK2A3 antibody is generated from a rabbit immunized with a KLH conjugated synthetic peptide between 296-330 amino acids from human CSNK2A3.

**Dilution**

WB~~1:1000

E~~Use at an assay dependent concentration.

**Format**

Purified polyclonal antibody supplied in PBS with 0.09% (W/V) sodium azide. This antibody is purified through a protein A column, followed by peptide affinity purification.

**Storage**

Maintain refrigerated at 2-8°C for up to 2 weeks. For long term storage store at -20°C in small aliquots to prevent freeze-thaw cycles.

**Precautions**

CSNK2A3 Antibody (C-Term) is for research use only and not for use in diagnostic or therapeutic procedures.

**CSNK2A3 Antibody (C-Term) - Protein Information****Name** CSNK2A3**Synonyms** CSNK2A1P

**Function** Probable catalytic subunit of a constitutively active serine/threonine-protein kinase complex that phosphorylates a large number of substrates containing acidic residues C-terminal to the phosphorylated serine or threonine. Amplification-dependent oncogene; promotes cell proliferation and tumorigenesis by down-regulating expression of the tumor suppressor protein, PML. May play a role in the pathogenesis of the lung cancer development and progression.

#### Tissue Location

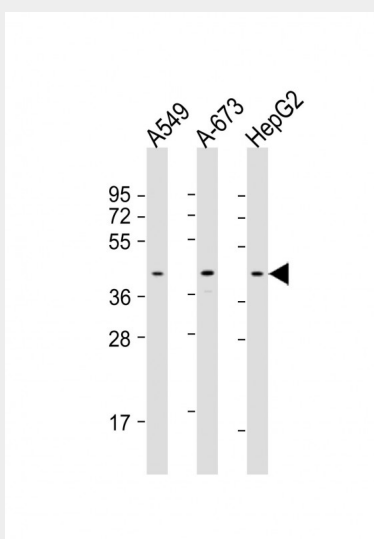
Detected in blood platelets and megakaryocyte cell lines. Poorly expressed in lung. Highly expressed in lung tumor tissues.

### CSNK2A3 Antibody (C-Term) - Protocols

Provided below are standard protocols that you may find useful for product applications.

- [Western Blot](#)
- [Blocking Peptides](#)
- [Dot Blot](#)
- [Immunohistochemistry](#)
- [Immunofluorescence](#)
- [Immunoprecipitation](#)
- [Flow Cytometry](#)
- [Cell Culture](#)

### CSNK2A3 Antibody (C-Term) - Images



All lanes : Anti-CSNK2A3 Antibody (C-Term) at 1:1000 dilution Lane 1: A549 whole cell lysate Lane 2: A-673 whole cell lysate Lane 3: HepG2 whole cell lysate Lysates/proteins at 20 µg per lane. Secondary Goat Anti-Rabbit IgG, (H+L), Peroxidase conjugated at 1/10000 dilution. Predicted band size : 45 kDa Blocking/Dilution buffer: 5% NFD/MTBST.

### CSNK2A3 Antibody (C-Term) - Background

Probable catalytic subunit of a constitutively active serine/threonine-protein kinase complex that phosphorylates a large number of substrates containing acidic residues C-terminal to the phosphorylated serine or threonine. Amplification-dependent oncogene; promotes cell proliferation and tumorigenesis by down- regulating expression of the tumor suppressor protein, PML. May play a role in the pathogenesis of the lung cancer development and progression.

**CSNK2A3 Antibody (C-Term) - References**

Wirkner U.,et al.Biochim. Biophys. Acta 1131:220-222(1992).  
Devilat I.,et al.FEBS Lett. 316:114-118(1993).  
Singh L.S.,et al.Biochemistry 41:8935-8940(2002).  
Taylor T.D.,et al.Nature 440:497-500(2006).  
Mural R.J.,et al.Submitted (SEP-2005) to the EMBL/GenBank/DDBJ databases.