

**PTGES2 Antibody (Center)**  
**Purified Rabbit Polyclonal Antibody (Pab)**  
**Catalog # AP21806c**

**Specification**

---

**PTGES2 Antibody (Center) - Product Information**

Application	WB,E
Primary Accession	<a href="#">Q9H7Z7</a>
Reactivity	Mouse
Host	Rabbit
Clonality	polyclonal
Isotype	Rabbit IgG
Calculated MW	41943

**PTGES2 Antibody (Center) - Additional Information**

**Gene ID** 80142

**Other Names**

Prostaglandin E synthase 2, Membrane-associated prostaglandin E synthase-2, mPGE synthase-2, Microsomal prostaglandin E synthase 2, mPGES-2, Prostaglandin-H(2) E-isomerase, Prostaglandin E synthase 2 truncated form, PTGES2, C9orf15, PGES2

**Target/Specificity**

This PTGES2 antibody is generated from a rabbit immunized with a KLH conjugated synthetic peptide between 113-146 amino acids from the Central region of human PTGES2.

**Dilution**

WB~~1:2000

E~~Use at an assay dependent concentration.

**Format**

Purified polyclonal antibody supplied in PBS with 0.09% (W/V) sodium azide. This antibody is purified through a protein A column, followed by peptide affinity purification.

**Storage**

Maintain refrigerated at 2-8°C for up to 2 weeks. For long term storage store at -20°C in small aliquots to prevent freeze-thaw cycles.

**Precautions**

PTGES2 Antibody (Center) is for research use only and not for use in diagnostic or therapeutic procedures.

**PTGES2 Antibody (Center) - Protein Information**

**Name** PTGES2

**Synonyms** C9orf15, PGES2

**Function** Isomerase that catalyzes the conversion of PGH2 into the more stable prostaglandin E2 (PGE2) (in vitro) (PubMed:[12804604](#), PubMed:[17585783](#), PubMed:[18198127](#)). The biological function and the GSH- dependent property of PTGES2 is still under debate (PubMed:[17585783](#), PubMed:[18198127](#)). In vivo, PTGES2 could form a complex with GSH and heme and would not participate in PGE2 synthesis but would catalyze the degradation of prostaglandin E2 H2 (PGH2) to 12(S)-hydroxy- 5(Z),8(E),10(E)-heptadecatrienoic acid (HHT) and malondialdehyde (MDA) (By similarity) (PubMed:[17585783](#)).

#### Cellular Location

Golgi apparatus membrane; Single-pass membrane protein

#### Tissue Location

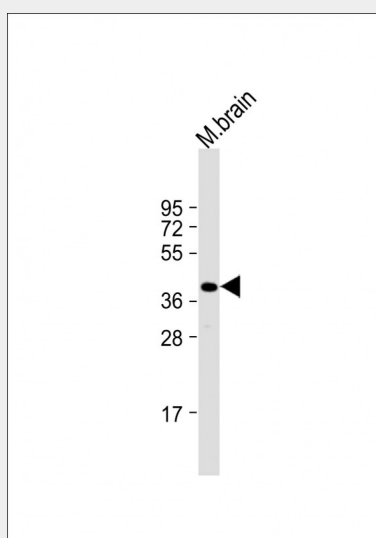
Widely expressed. Expressed in the heart, including apex, inter-ventricular septum, both atria and ventricles, but not in the aorta. Also expressed in fetal heart. Detected in various regions of the brain: cerebellum; occipital, frontal and parietal lobes. Also expressed in the lymph nodes, skeletal muscle, kidney and trachea, but not in the thymus or lung. Overexpressed in colorectal cancer

### PTGES2 Antibody (Center) - Protocols

Provided below are standard protocols that you may find useful for product applications.

- [Western Blot](#)
- [Blocking Peptides](#)
- [Dot Blot](#)
- [Immunohistochemistry](#)
- [Immunofluorescence](#)
- [Immunoprecipitation](#)
- [Flow Cytometry](#)
- [Cell Culture](#)

### PTGES2 Antibody (Center) - Images



Anti-PTGES2 Antibody (Center) at 1:2000 dilution + mouse brain lysate Lysates/proteins at 20 µg per lane. Secondary Goat Anti-Rabbit IgG, (H+L), Peroxidase conjugated at 1/10000 dilution. Predicted band size : 42 kDa Blocking/Dilution buffer: 5% NFDm/TBST.

### PTGES2 Antibody (Center) - Background

Isomerase that catalyzes the conversion of PGH2 into the more stable prostaglandin E2 (PGE2).

**PTGES2 Antibody (Center) - References**

Ota T.,et al.Nat. Genet. 36:40-45(2004).

Totoki Y.,et al.Submitted (APR-2005) to the EMBL/GenBank/DDBJ databases.

Humphray S.J.,et al.Nature 429:369-374(2004).

Tanikawa N.,et al.Biochem. Biophys. Res. Commun. 291:884-889(2002).

Watanabe K.,et al.Biochem. Biophys. Res. Commun. 306:577-581(2003).