

**BRCC3 Antibody (N-Term)**  
**Purified Rabbit Polyclonal Antibody (Pab)**  
**Catalog # AP21820a****Specification**

---

**BRCC3 Antibody (N-Term) - Product Information**

Application	WB,E
Primary Accession	<a href="#">P46736</a>
Reactivity	Human
Host	Rabbit
Clonality	polyclonal
Isotype	Rabbit IgG
Calculated MW	36072

**BRCC3 Antibody (N-Term) - Additional Information****Gene ID** 79184**Other Names**

Lys-63-specific deubiquitinase BRCC36, 3419-, BRCA1-A complex subunit BRCC36, BRCA1/BRCA2-containing complex subunit 3, BRCA1/BRCA2-containing complex subunit 36, BRISC complex subunit BRCC36, BRCC3, BRCC36, C61A, CXorf53

**Target/Specificity**

This BRCC3 antibody is generated from a rabbit immunized with a KLH conjugated synthetic peptide between 18-50 amino acids from human BRCC3.

**Dilution**

WB~~1:2000

E~~Use at an assay dependent concentration.

**Format**

Purified polyclonal antibody supplied in PBS with 0.09% (W/V) sodium azide. This antibody is purified through a protein A column, followed by peptide affinity purification.

**Storage**

Maintain refrigerated at 2-8°C for up to 2 weeks. For long term storage store at -20°C in small aliquots to prevent freeze-thaw cycles.

**Precautions**

BRCC3 Antibody (N-Term) is for research use only and not for use in diagnostic or therapeutic procedures.

**BRCC3 Antibody (N-Term) - Protein Information****Name** BRCC3**Synonyms** BRCC36, C6.1A, CXorf53

**Function** Metalloprotease that specifically cleaves 'Lys-63'-linked polyubiquitin chains (PubMed:[19214193](#), PubMed:[20656690](#), PubMed:[24075985](#), PubMed:[26344097](#)). Does not have activity toward 'Lys- 48'-linked polyubiquitin chains (PubMed:[19214193](#), PubMed:[20656690](#), PubMed:[24075985](#), PubMed:[26344097](#)). Component of the BRCA1-A complex, a complex that specifically recognizes 'Lys-63'-linked ubiquitinated histones H2A and H2AX at DNA lesions sites, leading to target the BRCA1-BARD1 heterodimer to sites of DNA damage at double-strand breaks (DSBs) (PubMed:[14636569](#), PubMed:[16707425](#), PubMed:[17525341](#), PubMed:[19202061](#), PubMed:[19261746](#), PubMed:[19261748](#), PubMed:[19261749](#)). In the BRCA1-A complex, it specifically removes 'Lys-63'-linked ubiquitin on histones H2A and H2AX, antagonizing the RNF8-dependent ubiquitination at double-strand breaks (DSBs) (PubMed:[20656690](#)). Catalytic subunit of the BRISC complex, a multiprotein complex that specifically cleaves 'Lys-63'-linked ubiquitin in various substrates (PubMed:[20656690](#), PubMed:[24075985](#), PubMed:[26195665](#), PubMed:[26344097](#)). Mediates the specific 'Lys-63'-specific deubiquitination associated with the COP9 signalosome complex (CSN), via the interaction of the BRISC complex with the CSN complex (PubMed:[19214193](#)). The BRISC complex is required for normal mitotic spindle assembly and microtubule attachment to kinetochores via its role in deubiquitinating NUMA1 (PubMed:[26195665](#)). Plays a role in interferon signaling via its role in the deubiquitination of the interferon receptor IFNAR1; deubiquitination increases IFNAR1 activity by enhancing its stability and cell surface expression (PubMed:[24075985](#), PubMed:[26344097](#)). Acts as a regulator of the NLRP3 inflammasome by mediating deubiquitination of NLRP3, leading to NLRP3 inflammasome assembly (By similarity). Down- regulates the response to bacterial lipopolysaccharide (LPS) via its role in IFNAR1 deubiquitination (PubMed:[24075985](#)). Deubiquitinates HDAC1 and PWWP2B leading to their stabilization (By similarity).

#### **Cellular Location**

Nucleus. Cytoplasm. Cytoplasm, cytoskeleton, spindle pole Note=Localizes at sites of DNA damage at double-strand breaks (DSBs) (PubMed:[20656690](#), PubMed:[26344097](#)). Interaction with ABRAXAS2 retains BRCC3 in the cytoplasm (PubMed:[20656690](#)).

#### **Tissue Location**

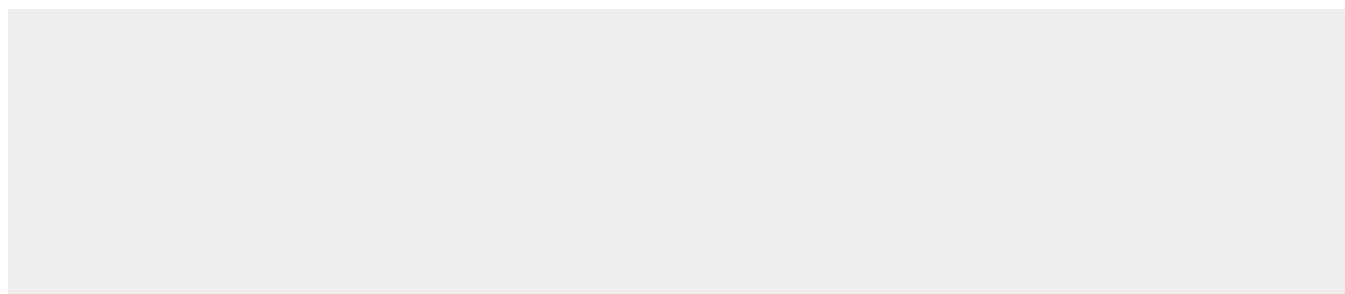
Heart, brain, placenta, lung, liver, skeletal muscle, kidney and pancreas. Aberrantly expressed in the vast majority of breast tumors.

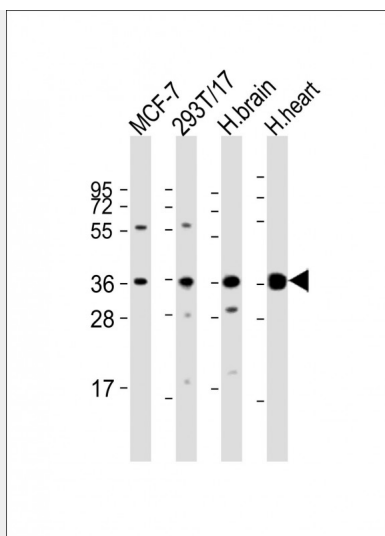
### **BRCC3 Antibody (N-Term) - Protocols**

Provided below are standard protocols that you may find useful for product applications.

- [Western Blot](#)
- [Blocking Peptides](#)
- [Dot Blot](#)
- [Immunohistochemistry](#)
- [Immunofluorescence](#)
- [Immunoprecipitation](#)
- [Flow Cytometry](#)
- [Cell Culture](#)

### **BRCC3 Antibody (N-Term) - Images**





All lanes : Anti-BRCC3 Antibody (N-Term) at 1:2000 dilution Lane 1: MCF-7 whole cell lysate Lane 2: 293T/17 whole cell lysate Lane 3: human brain lysate Lane 4: human heart lysate Lysates/proteins at 20 µg per lane. Secondary Goat Anti-Rabbit IgG, (H+L), Peroxidase conjugated at 1/10000 dilution. Predicted band size : 36 kDa Blocking/Dilution buffer: 5% NFDM/TBST.

#### **BRCC3 Antibody (N-Term) - Background**

Metalloprotease that specifically cleaves 'Lys-63'- linked polyubiquitin chains. Does not have activity toward 'Lys- 48'-linked polyubiquitin chains. Component of the BRCA1-A complex, a complex that specifically recognizes 'Lys-63'-linked ubiquitinated histones H2A and H2AX at DNA lesions sites, leading to target the BRCA1-BARD1 heterodimer to sites of DNA damage at double-strand breaks (DSBs). In the BRCA1-A complex, it specifically removes 'Lys-63'-linked ubiquitin on histones H2A and H2AX, antagonizing the RNF8-dependent ubiquitination at double-strand breaks (DSBs). Catalytic subunit of the BRISC complex, a multiprotein complex that specifically cleaves 'Lys-63'-linked ubiquitin in various substrates. Mediates the specific 'Lys-63'-specific deubiquitination associated with the COP9 signalosome complex (CSN), via the interaction of the BRISC complex with the CSN complex.

#### **BRCC3 Antibody (N-Term) - References**

Kenwrick S.,et al.Hum. Mol. Genet. 1:179-186(1992).  
Fisch P.,et al.Oncogene 8:3271-3276(1993).  
Dong Y.,et al.Mol. Cell 12:1087-1099(2003).  
Ota T.,et al.Nat. Genet. 36:40-45(2004).  
Ross M.T.,et al.Nature 434:325-337(2005).