

**ANO10 Antibody (C-Term)**  
**Purified Rabbit Polyclonal Antibody (Pab)**  
**Catalog # AP21823b****Specification**

---

**ANO10 Antibody (C-Term) - Product Information**

|                   |                        |
|-------------------|------------------------|
| Application       | WB,E                   |
| Primary Accession | <a href="#">O9NW15</a> |
| Reactivity        | Human, Mouse           |
| Host              | Rabbit                 |
| Clonality         | polyclonal             |
| Isotype           | Rabbit IgG             |
| Calculated MW     | 76329                  |

**ANO10 Antibody (C-Term) - Additional Information****Gene ID** 55129**Other Names**

Anoctamin-10, Transmembrane protein 16K, ANO10, TMEM16K

**Target/Specificity**

This ANO10 antibody is generated from a rabbit immunized with a KLH conjugated synthetic peptide between 620-653 amino acids from human ANO10.

**Dilution**

WB~~1:1000-2000

E~~Use at an assay dependent concentration.

**Format**

Purified polyclonal antibody supplied in PBS with 0.09% (W/V) sodium azide. This antibody is purified through a protein A column, followed by peptide affinity purification.

**Storage**

Maintain refrigerated at 2-8°C for up to 2 weeks. For long term storage store at -20°C in small aliquots to prevent freeze-thaw cycles.

**Precautions**

ANO10 Antibody (C-Term) is for research use only and not for use in diagnostic or therapeutic procedures.

**ANO10 Antibody (C-Term) - Protein Information****Name** ANO10**Synonyms** TMEM16K**Function** Does not exhibit calcium-activated chloride channel (CaCC) activity. Can inhibit the

activity of ANO1.

#### Cellular Location

Cell membrane; Multi-pass membrane protein. Note=Shows predominantly an intracellular localization with a weak expression in the cell membrane

#### Tissue Location

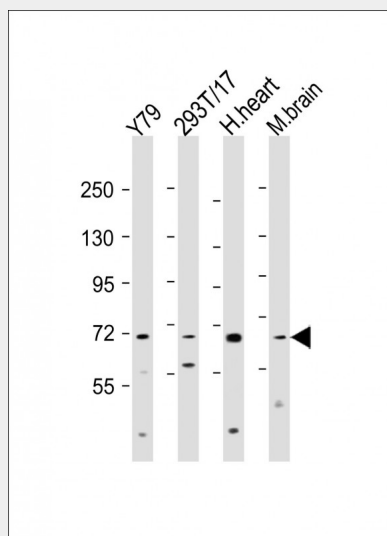
Highly expressed in the brain. Intermediate levels in the retina and heart and low levels in the placenta, liver, lung, duodenum, kidney, testis and spleen. In brain areas, highest expression in the frontal and occipital cortices and in the cerebellum. Lower expression in the fetal brain than in the adult brain

### ANO10 Antibody (C-Term) - Protocols

Provided below are standard protocols that you may find useful for product applications.

- [Western Blot](#)
- [Blocking Peptides](#)
- [Dot Blot](#)
- [Immunohistochemistry](#)
- [Immunofluorescence](#)
- [Immunoprecipitation](#)
- [Flow Cytometry](#)
- [Cell Culture](#)

### ANO10 Antibody (C-Term) - Images



All lanes : Anti-ANO10 Antibody (C-Term) at 1:1000-2000 dilution Lane 1: Y79 whole cell lysate Lane 2: 293T/17 whole cell lysate Lane 3: human heart lysate Lane 4: mouse brain lysate Lysates/proteins at 20 µg per lane. Secondary Goat Anti-Rabbit IgG, (H+L), Peroxidase conjugated at 1/10000 dilution. Predicted band size : 76 kDa Blocking/Dilution buffer: 5% NFDm/TBST.

### ANO10 Antibody (C-Term) - Background

Does not exhibit calcium-activated chloride channel (CaCC) activity. Can inhibit the activity of ANO1.

**ANO10 Antibody (C-Term) - References**

Ota T.,et al.Nat. Genet. 36:40-45(2004).  
Muzny D.M.,et al.Nature 440:1194-1198(2006).  
Mural R.J.,et al.Submitted (JUL-2005) to the EMBL/GenBank/DDBJ databases.  
Schreiber R.,et al.J. Biol. Chem. 285:7838-7845(2010).  
Duran C.,et al.Acta Pharmacol. Sin. 32:685-692(2011).