

**FGF12 Antibody (Center)**  
**Purified Rabbit Polyclonal Antibody (Pab)**  
**Catalog # AP21840c****Specification**

---

**FGF12 Antibody (Center) - Product Information**

Application	WB,E
Primary Accession	<a href="#">P61328</a>
Reactivity	Human, Mouse, Rat
Host	Rabbit
Clonality	polyclonal
Isotype	Rabbit IgG
Calculated MW	27399

**FGF12 Antibody (Center) - Additional Information****Gene ID** 2257**Other Names**

Fibroblast growth factor 12, FGF-12, Fibroblast growth factor homologous factor 1, FHF-1, Myocyte-activating factor, FGF12, FGF12B, FHF1

**Target/Specificity**

This FGF12 antibody is generated from a rabbit immunized with a KLH conjugated synthetic peptide between 159-191 amino acids from the Central region of human FGF12.

**Dilution**

WB~~1:1000

E~~Use at an assay dependent concentration.

**Format**

Purified polyclonal antibody supplied in PBS with 0.09% (W/V) sodium azide. This antibody is purified through a protein A column, followed by peptide affinity purification.

**Storage**

Maintain refrigerated at 2-8°C for up to 2 weeks. For long term storage store at -20°C in small aliquots to prevent freeze-thaw cycles.

**Precautions**

FGF12 Antibody (Center) is for research use only and not for use in diagnostic or therapeutic procedures.

**FGF12 Antibody (Center) - Protein Information****Name** FGF12**Synonyms** FGF12B, FHF1

**Function** Involved in nervous system development and function. Involved in the positive regulation of voltage-gated sodium channel activity. Promotes neuronal excitability by elevating the voltage dependence of neuronal sodium channel SCN8A fast inactivation.

**Cellular Location**

Nucleus.

**Tissue Location**

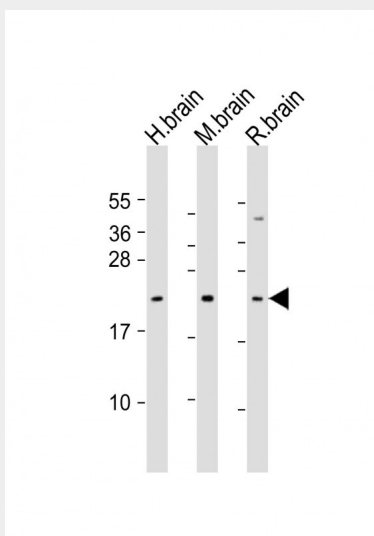
Brain, eye and testis; highly expressed in embryonic retina, olfactory epithelium, olfactory bulb, and in a segmental pattern of the body wall; in adult olfactory bulb, less in cerebellum, deep cerebellar nuclei, cortex and multiple midbrain structures

**FGF12 Antibody (Center) - Protocols**

Provided below are standard protocols that you may find useful for product applications.

- [Western Blot](#)
- [Blocking Peptides](#)
- [Dot Blot](#)
- [Immunohistochemistry](#)
- [Immunofluorescence](#)
- [Immunoprecipitation](#)
- [Flow Cytometry](#)
- [Cell Culture](#)

**FGF12 Antibody (Center) - Images**



All lanes : Anti-FGF12 Antibody (Center) at 1:1000 dilution Lane 1: human brain lysate Lane 2: mouse brain lysate Lane 3: rat brain lysate Lysates/proteins at 20 µg per lane. Secondary Goat Anti-Rabbit IgG, (H+L), Peroxidase conjugated at 1/10000 dilution. Predicted band size : 27 kDa Blocking/Dilution buffer: 5% NFDM/TBST.

**FGF12 Antibody (Center) - Background**

Probably involved in nervous system development and function.

**FGF12 Antibody (Center) - References**

Smallwood P.M.,et al.Proc. Natl. Acad. Sci. U.S.A. 93:9850-9857(1996).  
Kok L.D.S.,et al.Biochem. Biophys. Res. Commun. 255:717-721(1999).  
Ota T.,et al.Nat. Genet. 36:40-45(2004).  
Mural R.J.,et al.Submitted (SEP-2005) to the EMBL/GenBank/DDBJ databases.