

TMF1 Antibody (Center)
Purified Rabbit Polyclonal Antibody (Pab)
Catalog # AP21851c**Specification**

TMF1 Antibody (Center) - Product Information

Application	WB,E
Primary Accession	P82094
Reactivity	Human
Host	Rabbit
Clonality	polyclonal
Isotype	Rabbit IgG
Calculated MW	122842

TMF1 Antibody (Center) - Additional Information**Gene ID** 7110**Other Names**

TATA element modulatory factor, TMF, Androgen receptor coactivator 160 kDa protein, Androgen receptor-associated protein of 160 kDa, TMF1, ARA160

Target/Specificity

This TMF1 antibody is generated from a rabbit immunized with a KLH conjugated synthetic peptide between 447-480 amino acids from the Central region of human TMF1.

Dilution

WB~~1:1000

E~~Use at an assay dependent concentration.

Format

Purified polyclonal antibody supplied in PBS with 0.09% (W/V) sodium azide. This antibody is purified through a protein A column, followed by peptide affinity purification.

Storage

Maintain refrigerated at 2-8°C for up to 2 weeks. For long term storage store at -20°C in small aliquots to prevent freeze-thaw cycles.

Precautions

TMF1 Antibody (Center) is for research use only and not for use in diagnostic or therapeutic procedures.

TMF1 Antibody (Center) - Protein Information**Name** TMF1**Synonyms** ARA160

Function Potential coactivator of the androgen receptor. Mediates STAT3 degradation. May play critical roles in two RAB6-dependent retrograde transport processes: one from endosomes to the Golgi and the other from the Golgi to the ER. This protein binds the HIV-1 TATA element and inhibits transcriptional activation by the TATA-binding protein (TBP).

Cellular Location

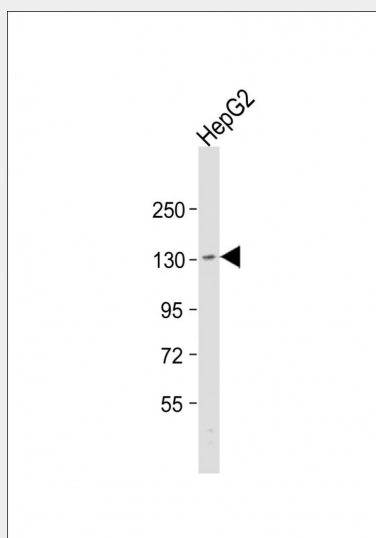
Cytoplasm. Nucleus. Golgi apparatus membrane. Note=Concentrated at the budding structures localized at the tips of cisternae

TMF1 Antibody (Center) - Protocols

Provided below are standard protocols that you may find useful for product applications.

- [Western Blot](#)
- [Blocking Peptides](#)
- [Dot Blot](#)
- [Immunohistochemistry](#)
- [Immunofluorescence](#)
- [Immunoprecipitation](#)
- [Flow Cytometry](#)
- [Cell Culture](#)

TMF1 Antibody (Center) - Images



Anti-TMF1 Antibody (Center) at 1:1000 dilution + HepG2 whole cell lysate Lysates/proteins at 20 µg per lane. Secondary Goat Anti-Rabbit IgG, (H+L), Peroxidase conjugated at 1/10000 dilution. Predicted band size : 123 kDa Blocking/Dilution buffer: 5% NFDM/TBST.

TMF1 Antibody (Center) - Background

Potential coactivator of the androgen receptor. Mediates STAT3 degradation. May play critical roles in two RAB6-dependent retrograde transport processes: one from endosomes to the Golgi and the other from the Golgi to the ER. This protein binds the HIV-1 TATA element and inhibits transcriptional activation by the TATA-binding protein (TBP).

TMF1 Antibody (Center) - References

Garcia J.A.,et al.Proc. Natl. Acad. Sci. U.S.A. 89:9372-9376(1992).
Hsiao P.W.,et al.J. Biol. Chem. 274:22373-22379(1999).
Totoki Y.,et al.Submitted (MAR-2005) to the EMBL/GenBank/DDBJ databases.
Muzny D.M.,et al.Nature 440:1194-1198(2006).
Mural R.J.,et al.Submitted (JUL-2005) to the EMBL/GenBank/DDBJ databases.