

**CLIC2 Antibody (Center)**  
**Purified Rabbit Polyclonal Antibody (Pab)**  
**Catalog # AP21857c****Specification**

---

**CLIC2 Antibody (Center) - Product Information**

Application	WB,E
Primary Accession	<a href="#">O15247</a>
Other Accession	<a href="#">Q5M883</a>
Reactivity	Human
Predicted	Rat
Host	Rabbit
Clonality	polyclonal
Isotype	Rabbit IgG
Calculated MW	28356

**CLIC2 Antibody (Center) - Additional Information****Gene ID** 1193**Other Names**

Chloride intracellular channel protein 2, XAP121, CLIC2

**Target/Specificity**

This CLIC2 antibody is generated from a rabbit immunized with a KLH conjugated synthetic peptide between 105-137 amino acids from the Central region of human CLIC2.

**Dilution**

WB~~1:2000

E~~Use at an assay dependent concentration.

**Format**

Purified polyclonal antibody supplied in PBS with 0.09% (W/V) sodium azide. This antibody is purified through a protein A column, followed by peptide affinity purification.

**Storage**

Maintain refrigerated at 2-8°C for up to 2 weeks. For long term storage store at -20°C in small aliquots to prevent freeze-thaw cycles.

**Precautions**

CLIC2 Antibody (Center) is for research use only and not for use in diagnostic or therapeutic procedures.

**CLIC2 Antibody (Center) - Protein Information****Name** CLIC2 {ECO:0000303|PubMed:9339381, ECO:0000312|HGNC:HGNC:2063}**Function** In the soluble state, catalyzes glutaredoxin-like thiol disulfide exchange reactions with

reduced glutathione as electron donor. Displays weak glutathione peroxidase activity (Probable) (PubMed:[25581026](#)). Can insert into membranes and form chloride ion channels. Membrane insertion seems to be redox-regulated and may occur only under oxidizing conditions. Modulates the activity of RYR2 and inhibits calcium influx.

#### Cellular Location

Cytoplasm. Membrane; Single-pass membrane protein. Note=Exists both as soluble cytoplasmic protein and as membrane protein with probably a single transmembrane domain

#### Tissue Location

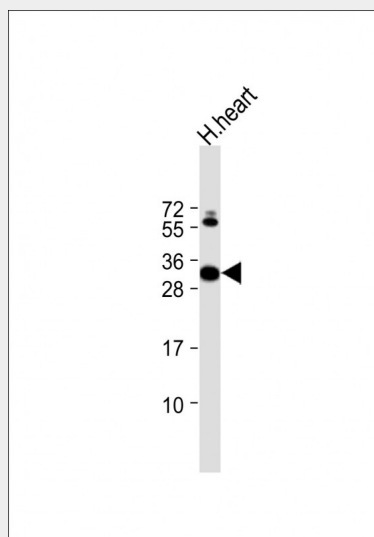
Expressed in adult and fetal brain, heart, skeletal muscle, liver, lung, and spleen. Detected in adult stomach and testis Expressed in fetal thymus and kidney.

### CLIC2 Antibody (Center) - Protocols

Provided below are standard protocols that you may find useful for product applications.

- [Western Blot](#)
- [Blocking Peptides](#)
- [Dot Blot](#)
- [Immunohistochemistry](#)
- [Immunofluorescence](#)
- [Immunoprecipitation](#)
- [Flow Cytometry](#)
- [Cell Culture](#)

### CLIC2 Antibody (Center) - Images



Anti-CLIC2 Antibody (Center) at 1:2000 dilution + human heart lysate Lysates/proteins at 20 µg per lane. Secondary Goat Anti-Rabbit IgG, (H+L), Peroxidase conjugated at 1/10000 dilution. Predicted band size : 28 kDa Blocking/Dilution buffer: 5% NFDm/TBST.

### CLIC2 Antibody (Center) - Background

Can insert into membranes and form chloride ion channels. Channel activity depends on the pH. Membrane insertion seems to be redox-regulated and may occur only under oxidizing conditions. Modulates the activity of RYR2 and inhibits calcium influx.

**CLIC2 Antibody (Center) - References**

Heiss N.S.,et al.Genomics 45:224-228(1997).

Ota T.,et al.Nat. Genet. 36:40-45(2004).

Ross M.T.,et al.Nature 434:325-337(2005).

Mural R.J.,et al.Submitted (SEP-2005) to the EMBL/GenBank/DDBJ databases.

Fan L.,et al.FEBS Lett. 540:77-80(2003).