

**NUGGC Antibody (Center)**  
**Purified Rabbit Polyclonal Antibody (Pab)**  
**Catalog # AP21865c**

**Specification**

---

**NUGGC Antibody (Center) - Product Information**

Application	WB,E
Primary Accession	<a href="#">Q68CJ6</a>
Reactivity	Human
Host	Rabbit
Clonality	polyclonal
Isotype	Rabbit IgG
Calculated MW	91132
Antigen Region	279-311

**NUGGC Antibody (Center) - Additional Information**

**Gene ID** 389643

**Other Names**

Nuclear GTPase SLIP-GC, 361-, Speckled-like pattern in the germinal center, NUGGC, C8orf80

**Target/Specificity**

This C8orf80 antibody is generated from a rabbit immunized with a KLH conjugated synthetic peptide between 279-311 amino acids from the Central region of human NUGGC.

**Dilution**

WB~~1:2000

E~~Use at an assay dependent concentration.

**Format**

Purified polyclonal antibody supplied in PBS with 0.09% (W/V) sodium azide. This antibody is purified through a protein A column, followed by peptide affinity purification.

**Storage**

Maintain refrigerated at 2-8°C for up to 2 weeks. For long term storage store at -20°C in small aliquots to prevent freeze-thaw cycles.

**Precautions**

NUGGC Antibody (Center) is for research use only and not for use in diagnostic or therapeutic procedures.

**NUGGC Antibody (Center) - Protein Information**

**Name** NUGGC

**Synonyms** C8orf80

**Function** Nuclear GTPase found in germinal center B-cells, where it may inhibit function of the activation-induced cytidine deaminase AICDA (PubMed:[19734146](#)). Reduces somatic hypermutation in B-cells which may enhance genome stability (By similarity).

**Cellular Location**

Nucleus speckle.

**Tissue Location**

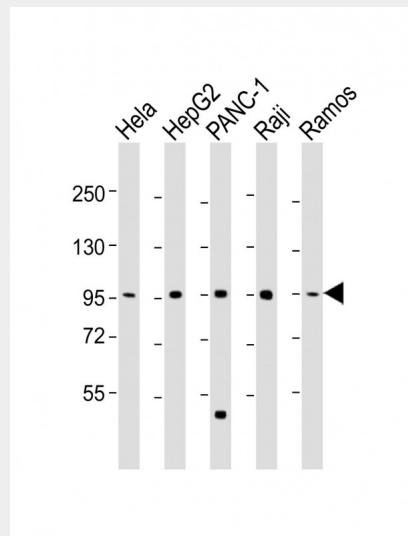
Expressed in germinal center B-cell and in lymphomas derived from germinal center B-cell

**NUGGC Antibody (Center) - Protocols**

Provided below are standard protocols that you may find useful for product applications.

- [Western Blot](#)
- [Blocking Peptides](#)
- [Dot Blot](#)
- [Immunohistochemistry](#)
- [Immunofluorescence](#)
- [Immunoprecipitation](#)
- [Flow Cytometry](#)
- [Cell Culture](#)

**NUGGC Antibody (Center) - Images**



All lanes : Anti-NUGGC Antibody (Center) at 1:2000 dilution Lane 1: HeLa whole cell lysate Lane 2: HepG2 whole cell lysate Lane 3: PANC-1 whole cell lysate Lane 4: Raji whole cell lysate Lane 5: Ramos whole cell lysate Lysates/proteins at 20 µg per lane. Secondary Goat Anti-Rabbit IgG, (H+L), Peroxidase conjugated at 1/10000 dilution. Predicted band size : 91 kDa Blocking/Dilution buffer: 5% NFDM/TBST.

**NUGGC Antibody (Center) - Background**

Plays a role as replication-related GTPase protein in germinal center B-cell.

**NUGGC Antibody (Center) - References**

Nusbaum C.,et al.Nature 439:331-335(2006).  
Yamada S.,et al.Oncogene 23:5901-5911(2004).  
Ota T.,et al.Nat. Genet. 36:40-45(2004).  
Richter K.,et al.J. Biol. Chem. 284:30652-30661(2009).