

**SDHC Antibody (C-Term)**  
**Purified Rabbit Polyclonal Antibody (Pab)**  
**Catalog # AP21871b****Specification**

---

**SDHC Antibody (C-Term) - Product Information**

Application	WB,E
Primary Accession	<a href="#">Q99643</a>
Reactivity	Human, Mouse
Host	Rabbit
Clonality	polyclonal
Isotype	Rabbit IgG
Calculated MW	18610
Antigen Region	113-144

**SDHC Antibody (C-Term) - Additional Information****Gene ID** 6391**Other Names**

Succinate dehydrogenase cytochrome b560 subunit, mitochondrial, Integral membrane protein CII-3, QPs-1, QPs1, Succinate dehydrogenase complex subunit C, Succinate-ubiquinone oxidoreductase cytochrome B large subunit, CYBL, SDHC, CYB560, SDH3

**Target/Specificity**

This SDHC antibody is generated from a rabbit immunized with a KLH conjugated synthetic peptide between 113-144 amino acids from human SDHC.

**Dilution**

WB~~1:2000

**Format**

Purified polyclonal antibody supplied in PBS with 0.09% (W/V) sodium azide. This antibody is purified through a protein A column, followed by peptide affinity purification.

**Storage**

Maintain refrigerated at 2-8°C for up to 2 weeks. For long term storage store at -20°C in small aliquots to prevent freeze-thaw cycles.

**Precautions**

SDHC Antibody (C-Term) is for research use only and not for use in diagnostic or therapeutic procedures.

**SDHC Antibody (C-Term) - Protein Information****Name** SDHC**Synonyms** CYB560, SDH3

**Function** Membrane-anchoring subunit of succinate dehydrogenase (SDH) that is involved in complex II of the mitochondrial electron transport chain and is responsible for transferring electrons from succinate to ubiquinone (coenzyme Q).

**Cellular Location**

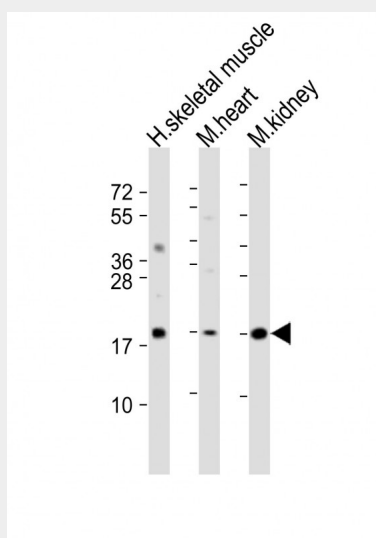
Mitochondrion inner membrane; Multi-pass membrane protein

**SDHC Antibody (C-Term) - Protocols**

Provided below are standard protocols that you may find useful for product applications.

- [Western Blot](#)
- [Blocking Peptides](#)
- [Dot Blot](#)
- [Immunohistochemistry](#)
- [Immunofluorescence](#)
- [Immunoprecipitation](#)
- [Flow Cytometry](#)
- [Cell Culture](#)

**SDHC Antibody (C-Term) - Images**



All lanes : Anti-SDHC Antibody (C-Term) at 1:2000 dilution Lane 1: human skeletal muscle lysate Lane 2: mouse heart lysate Lane 3: mouse kidney lysate Lysates/proteins at 20 µg per lane. Secondary Goat Anti-Rabbit IgG, (H+L), Peroxidase conjugated at 1/10000 dilution. Predicted band size : 19 kDa Blocking/Dilution buffer: 5% NFDM/TBST.

**SDHC Antibody (C-Term) - Background**

Membrane-anchoring subunit of succinate dehydrogenase (SDH) that is involved in complex II of the mitochondrial electron transport chain and is responsible for transferring electrons from succinate to ubiquinone (coenzyme Q).

**SDHC Antibody (C-Term) - References**

Au H.C.,et al.Submitted (MAY-1996) to the EMBL/GenBank/DDBJ databases.  
Hirawake H.,et al.Cytogenet. Cell Genet. 79:132-138(1997).

Elbehti-Green A.,et al.Gene 213:133-140(1998).

Wohlk N.,et al.Mol. Genet. Metab. 65:187-190(1998).

Hiatomi H.,et al.Submitted (OCT-2005) to the EMBL/GenBank/DDBJ databases.