

**SSX1 Antibody (Center)**  
**Purified Rabbit Polyclonal Antibody (Pab)**  
**Catalog # AP21898c****Specification**

---

**SSX1 Antibody (Center) - Product Information**

Application	WB,E
Primary Accession	<a href="#">Q16384</a>
Reactivity	Human
Host	Rabbit
Clonality	polyclonal
Isotype	Rabbit IgG
Calculated MW	21931

**SSX1 Antibody (Center) - Additional Information****Gene ID** 6756**Other Names**

Protein SSX1, Cancer/testis antigen 51, CT51, Synovial sarcoma, X breakpoint 1, SSX1

**Target/Specificity**

This SSX1 antibody is generated from a rabbit immunized with a KLH conjugated synthetic peptide between 97-128 amino acids from the Central region of human SSX1.

**Dilution**

WB~~1:2000

E~~Use at an assay dependent concentration.

**Format**

Purified polyclonal antibody supplied in PBS with 0.09% (W/V) sodium azide. This antibody is purified through a protein A column, followed by peptide affinity purification.

**Storage**

Maintain refrigerated at 2-8°C for up to 2 weeks. For long term storage store at -20°C in small aliquots to prevent freeze-thaw cycles.

**Precautions**

SSX1 Antibody (Center) is for research use only and not for use in diagnostic or therapeutic procedures.

**SSX1 Antibody (Center) - Protein Information****Name** SSX1

**Function** Could act as a modulator of transcription (PubMed:[7539744](#)). Plays a role in spermatogenesis (PubMed:[36796361](#)).

### Cellular Location

Cytoplasm, cytoskeleton, flagellum axoneme

### Tissue Location

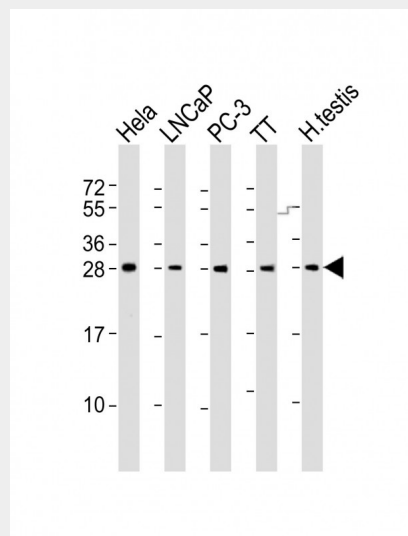
Expressed at high level in the testis. Expressed at low level in thyroid. Not detected in tonsil, colon, lung, spleen, prostate, kidney, striated and smooth muscles. Detected in rhabdomyosarcoma and fibrosarcoma cell lines. Not detected in mesenchymal and epithelial cell lines (PubMed:7539744). Expressed in testis (PubMed:36796361).

### SSX1 Antibody (Center) - Protocols

Provided below are standard protocols that you may find useful for product applications.

- [Western Blot](#)
- [Blocking Peptides](#)
- [Dot Blot](#)
- [Immunohistochemistry](#)
- [Immunofluorescence](#)
- [Immunoprecipitation](#)
- [Flow Cytometry](#)
- [Cell Culture](#)

### SSX1 Antibody (Center) - Images



All lanes : Anti-SSX1 Antibody (Center) at 1:2000 dilution Lane 1: HeLa whole cell lysate Lane 2: LNCaP whole cell lysate Lane 3: PC-3 whole cell lysate Lane 4: TT whole cell lysate Lane 5: human testis lysate Lysates/proteins at 20 µg per lane. Secondary Goat Anti-Rabbit IgG, (H+L), Peroxidase conjugated at 1/10000 dilution. Predicted band size : 22 kDa Blocking/Dilution buffer: 5% NFDM/TBST.

### SSX1 Antibody (Center) - Background

Could act as a modulator of transcription.

### SSX1 Antibody (Center) - References

Crew A.J.,et al.EMBO J. 14:2333-2340(1995).

Ross M.T.,et al.Nature 434:325-337(2005).  
de Leeuw B.,et al.Hum. Mol. Genet. 4:1097-1099(1995).