

TMED4 Antibody (Center)
Purified Rabbit Polyclonal Antibody (Pab)
Catalog # AP21899c**Specification**

TMED4 Antibody (Center) - Product Information

Application	WB,E
Primary Accession	Q7Z7H5
Other Accession	Q8R1V4
Reactivity	Human
Predicted	Mouse
Host	Rabbit
Clonality	polyclonal
Isotype	Rabbit IgG
Calculated MW	25943

TMED4 Antibody (Center) - Additional Information**Gene ID** 222068**Other Names**

Transmembrane emp24 domain-containing protein 4, Endoplasmic reticulum stress-response protein 25, ERS25, GMP25iso, Putative NF-kappa-B-activating protein 156, p24 family protein alpha-3, p24alpha3, TMED4, ERS25

Target/Specificity

This TMED4 antibody is generated from a rabbit immunized with a KLH conjugated synthetic peptide between 130-161 amino acids from the Central region of human TMED4.

Dilution

WB~~1:2000

E~~Use at an assay dependent concentration.

Format

Purified polyclonal antibody supplied in PBS with 0.09% (W/V) sodium azide. This antibody is purified through a protein A column, followed by peptide affinity purification.

Storage

Maintain refrigerated at 2-8°C for up to 2 weeks. For long term storage store at -20°C in small aliquots to prevent freeze-thaw cycles.

Precautions

TMED4 Antibody (Center) is for research use only and not for use in diagnostic or therapeutic procedures.

TMED4 Antibody (Center) - Protein Information**Name** TMED4

Synonyms ERS25

Function Involved in vesicular protein trafficking, mainly in the early secretory pathway. targeting. Involved in the maintenance of the Golgi apparatus. Appears to play a role in the biosynthesis of secreted cargo including processing. Involved in endoplasmic reticulum stress response. May play a role in the regulation of heat-shock response and apoptosis (By similarity).

Cellular Location

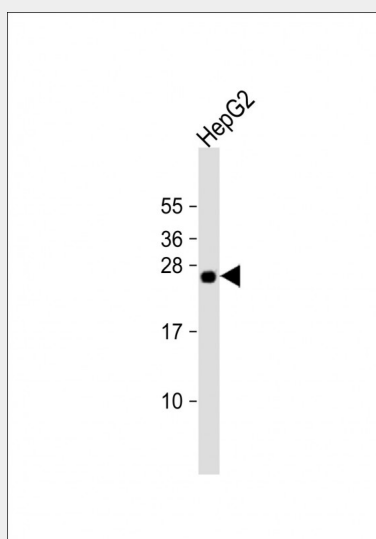
Endoplasmic reticulum membrane; Single-pass type I membrane protein

TMED4 Antibody (Center) - Protocols

Provided below are standard protocols that you may find useful for product applications.

- [Western Blot](#)
- [Blocking Peptides](#)
- [Dot Blot](#)
- [Immunohistochemistry](#)
- [Immunofluorescence](#)
- [Immunoprecipitation](#)
- [Flow Cytometry](#)
- [Cell Culture](#)

TMED4 Antibody (Center) - Images



Anti-TMED4 Antibody (Center) at 1:2000 dilution + HepG2 whole cell lysate Lysates/proteins at 20 µg per lane. Secondary Goat Anti-Rabbit IgG, (H+L), Peroxidase conjugated at 1/10000 dilution. Predicted band size : 26 kDa Blocking/Dilution buffer: 5% NFDm/TBST.

TMED4 Antibody (Center) - Background

Involved in vesicular protein trafficking, mainly in the early secretory pathway. targeting. Involved in the maintenance of the Golgi apparatus. Appears to play a role in the biosynthesis of secreted cargo including processing. Involved in endoplasmic reticulum stress response. May play a role in the regulation of heat-shock response and apoptosis (By similarity).

TMED4 Antibody (Center) - References

Ota T.,et al.Nat. Genet. 36:40-45(2004).
Bechtel S.,et al.BMC Genomics 8:399-399(2007).
Scherer S.W.,et al.Science 300:767-772(2003).
Mural R.J.,et al.Submitted (SEP-2005) to the EMBL/GenBank/DDBJ databases.
Kim J.W.,et al.Submitted (DEC-2002) to the EMBL/GenBank/DDBJ databases.