

TNRC6A Antibody (Center)
Purified Rabbit Polyclonal Antibody (Pab)
Catalog # AP21900c**Specification**

TNRC6A Antibody (Center) - Product Information

| | |
|-------------------|------------------------|
| Application | WB,E |
| Primary Accession | Q8NDV7 |
| Reactivity | Human |
| Host | Rabbit |
| Clonality | polyclonal |
| Isotype | Rabbit IgG |
| Calculated MW | 210297 |

TNRC6A Antibody (Center) - Additional Information**Gene ID** 27327**Other Names**

Trinucleotide repeat-containing gene 6A protein, CAG repeat protein 26, EMSY interactor protein, GW182 autoantigen, Protein GW1, Glycine-tryptophan protein of 182 kDa, TNRC6A, CAGH26, KIAA1460, TNRC6

Target/Specificity

This TNRC6A antibody is generated from a rabbit immunized with a KLH conjugated synthetic peptide between 855-885 amino acids from the Central region of human TNRC6A.

Dilution

WB~~1:1000-1:2000

E~~Use at an assay dependent concentration.

Format

Purified polyclonal antibody supplied in PBS with 0.09% (W/V) sodium azide. This antibody is purified through a protein A column, followed by peptide affinity purification.

Storage

Maintain refrigerated at 2-8°C for up to 2 weeks. For long term storage store at -20°C in small aliquots to prevent freeze-thaw cycles.

Precautions

TNRC6A Antibody (Center) is for research use only and not for use in diagnostic or therapeutic procedures.

TNRC6A Antibody (Center) - Protein Information**Name** TNRC6A**Synonyms** CAGH26, KIAA1460, TNRC6

Function Plays a role in RNA-mediated gene silencing by both micro- RNAs (miRNAs) and short interfering RNAs (siRNAs). Required for miRNA- dependent repression of translation and for siRNA-dependent endonucleolytic cleavage of complementary mRNAs by argonaute family proteins. As a scaffolding protein, associates with argonaute proteins bound to partially complementary mRNAs, and can simultaneously recruit CCR4-NOT and PAN deadenylase complexes.

Cellular Location

Cytoplasm, P-body Note=Mammalian P-bodies are also known as GW bodies (GWBs)

Tissue Location

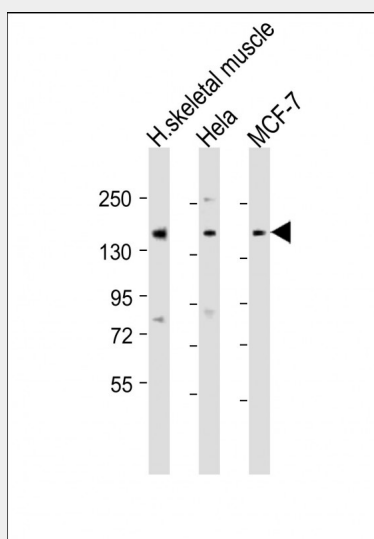
Ubiquitous.

TNRC6A Antibody (Center) - Protocols

Provided below are standard protocols that you may find useful for product applications.

- [Western Blot](#)
- [Blocking Peptides](#)
- [Dot Blot](#)
- [Immunohistochemistry](#)
- [Immunofluorescence](#)
- [Immunoprecipitation](#)
- [Flow Cytometry](#)
- [Cell Culture](#)

TNRC6A Antibody (Center) - Images



All lanes : Anti-TNRC6A Antibody (Center) at 1:1000-1:2000 dilution Lane 1: human skeletal muscle lysate Lane 2: HeLa whole cell lysate Lane 3: MCF-7 whole cell lysate Lysates/proteins at 20 µg per lane. Secondary Goat Anti-Rabbit IgG, (H+L), Peroxidase conjugated at 1/10000 dilution. Predicted band size : 210 kDa Blocking/Dilution buffer: 5% NFD/MTBST.

TNRC6A Antibody (Center) - Background

Plays a role in RNA-mediated gene silencing by both micro-RNAs (miRNAs) and short interfering RNAs (siRNAs). Required for miRNA-dependent repression of translation and for siRNA- dependent

endonucleolytic cleavage of complementary mRNAs by argonaute family proteins. As scaffolding protein associates with argonaute proteins bound to partially complementary mRNAs and simultaneously can recruit CCR4-NOT and PAN deadenylase complexes.

TNRC6A Antibody (Center) - References

Eystathiou T., et al. Mol. Biol. Cell 13:1338-1351(2002).
Hughes-Davies L., et al. Submitted (JUN-2002) to the EMBL/GenBank/DDBJ databases.
Bechtel S., et al. BMC Genomics 8:399-399(2007).
Martin J., et al. Nature 432:988-994(2004).
Margolis R.L., et al. Hum. Genet. 100:114-122(1997).