

TMED4 Antibody (C-Term)
Purified Rabbit Polyclonal Antibody (Pab)
Catalog # AP21909b**Specification**

TMED4 Antibody (C-Term) - Product Information

Application	WB,E
Primary Accession	Q7Z7H5
Other Accession	Q8R1V4 , Q3T133 , Q9BVK6 , Q99KF1 , Q5I0E7 , B3MTS8 , B3NZM5 , B4JG34 , Q9I7K5 , B4KB41 , B4GMC3 , Q295B2 , B4HJV5 , B4QWH9 , B4LYB8 , B4NKL0 , B4PVC6
Reactivity	Human
Predicted	Mouse, Bovine, Rat, Drosophila
Host	Rabbit
Clonality	polyclonal
Isotype	Rabbit IgG
Calculated MW	25943

TMED4 Antibody (C-Term) - Additional Information**Gene ID** 222068**Other Names**

Transmembrane emp24 domain-containing protein 4, Endoplasmic reticulum stress-response protein 25, ERS25, GMP25iso, Putative NF-kappa-B-activating protein 156, p24 family protein alpha-3, p24alpha3, TMED4, ERS25

Target/Specificity

This TMED4 antibody is generated from a rabbit immunized with a KLH conjugated synthetic peptide between 195-225 amino acids from human TMED4.

Dilution

WB~~1:2000

E~~Use at an assay dependent concentration.

Format

Purified polyclonal antibody supplied in PBS with 0.09% (W/V) sodium azide. This antibody is purified through a protein A column, followed by peptide affinity purification.

Storage

Maintain refrigerated at 2-8°C for up to 2 weeks. For long term storage store at -20°C in small aliquots to prevent freeze-thaw cycles.

Precautions

TMED4 Antibody (C-Term) is for research use only and not for use in diagnostic or therapeutic procedures.

TMED4 Antibody (C-Term) - Protein Information

Name TMED4

Synonyms ERS25

Function Involved in vesicular protein trafficking, mainly in the early secretory pathway. targeting. Involved in the maintenance of the Golgi apparatus. Appears to play a role in the biosynthesis of secreted cargo including processing. Involved in endoplasmic reticulum stress response. May play a role in the regulation of heat-shock response and apoptosis (By similarity).

Cellular Location

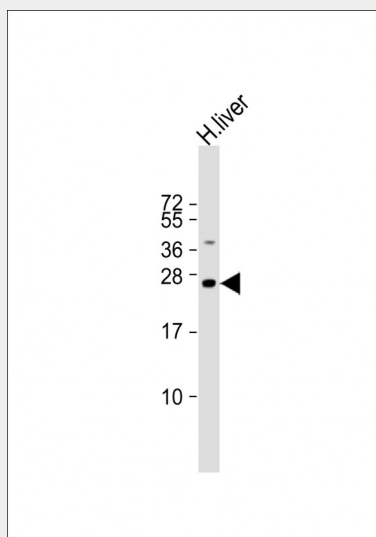
Endoplasmic reticulum membrane; Single-pass type I membrane protein

TMED4 Antibody (C-Term) - Protocols

Provided below are standard protocols that you may find useful for product applications.

- [Western Blot](#)
- [Blocking Peptides](#)
- [Dot Blot](#)
- [Immunohistochemistry](#)
- [Immunofluorescence](#)
- [Immunoprecipitation](#)
- [Flow Cytometry](#)
- [Cell Culture](#)

TMED4 Antibody (C-Term) - Images



Anti-TMED4 Antibody (C-Term) at 1:2000 dilution + human liver lysate Lysates/proteins at 20 µg per lane. Secondary Goat Anti-Rabbit IgG, (H+L), Peroxidase conjugated at 1/10000 dilution. Predicted band size : 26 kDa Blocking/Dilution buffer: 5% NFDN/TBST.

TMED4 Antibody (C-Term) - Background

Involved in vesicular protein trafficking, mainly in the early secretory pathway. targeting. Involved in the maintenance of the Golgi apparatus. Appears to play a role in the biosynthesis of secreted cargo including processing. Involved in endoplasmic reticulum stress response. May play a role in

the regulation of heat-shock response and apoptosis (By similarity).

TMED4 Antibody (C-Term) - References

Ota T.,et al.Nat. Genet. 36:40-45(2004).

Bechtel S.,et al.BMC Genomics 8:399-399(2007).

Scherer S.W.,et al.Science 300:767-772(2003).

Mural R.J.,et al.Submitted (SEP-2005) to the EMBL/GenBank/DDBJ databases.

Kim J.W.,et al.Submitted (DEC-2002) to the EMBL/GenBank/DDBJ databases.