

**WBP1 Antibody (C-Term)**  
**Purified Rabbit Polyclonal Antibody (Pab)**  
**Catalog # AP21910b****Specification**

---

**WBP1 Antibody (C-Term) - Product Information**

Application	WB,E
Primary Accession	<a href="#">Q96G27</a>
Reactivity	Human
Host	Rabbit
Clonality	polyclonal
Isotype	Rabbit IgG
Calculated MW	29140

**WBP1 Antibody (C-Term) - Additional Information****Gene ID** 23559**Other Names**

WW domain-binding protein 1, WBP-1, WBP1

**Target/Specificity**

This WBP1 antibody is generated from a rabbit immunized with a KLH conjugated synthetic peptide between 202-234 amino acids from human WBP1.

**Dilution**

WB~~1:2000-1:4000

E~~Use at an assay dependent concentration.

**Format**

Purified polyclonal antibody supplied in PBS with 0.09% (W/V) sodium azide. This antibody is purified through a protein A column, followed by peptide affinity purification.

**Storage**

Maintain refrigerated at 2-8°C for up to 2 weeks. For long term storage store at -20°C in small aliquots to prevent freeze-thaw cycles.

**Precautions**

WBP1 Antibody (C-Term) is for research use only and not for use in diagnostic or therapeutic procedures.

**WBP1 Antibody (C-Term) - Protein Information****Name** WBP1**Tissue Location**

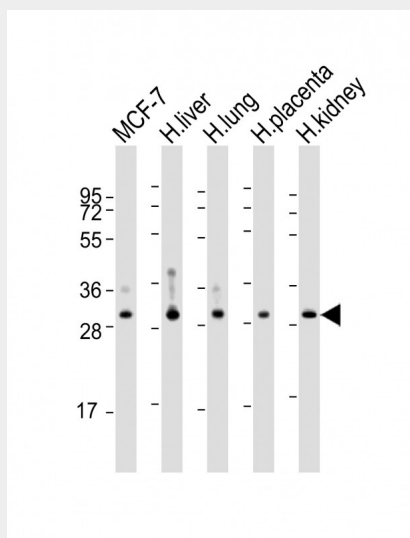
Expressed in most tissues but at significantly lower levels in placenta, lung, liver, and kidney

## WBP1 Antibody (C-Term) - Protocols

Provided below are standard protocols that you may find useful for product applications.

- [Western Blot](#)
- [Blocking Peptides](#)
- [Dot Blot](#)
- [Immunohistochemistry](#)
- [Immunofluorescence](#)
- [Immunoprecipitation](#)
- [Flow Cytometry](#)
- [Cell Culture](#)

## WBP1 Antibody (C-Term) - Images



All lanes : Anti-WBP1 Antibody (C-Term) at 1:2000-1:4000 dilution Lane 1: MCF-7 whole cell lysate Lane 2: human liver lysate Lane 3: human lung lysate Lane 4: human placenta lysate Lane 5: human kidney lysate Lysates/proteins at 20 µg per lane. Secondary Goat Anti-Rabbit IgG, (H+L), Peroxidase conjugated at 1/10000 dilution. Predicted band size : 29 kDa Blocking/Dilution buffer: 5% NFDM/TBST.

## WBP1 Antibody (C-Term) - References

- Chen H.I.,et al.J. Biol. Chem. 272:17070-17077(1997).  
Ota T.,et al.Nat. Genet. 36:40-45(2004).  
Mural R.J.,et al.Submitted (SEP-2005) to the EMBL/GenBank/DDBJ databases.  
Pirozzi G.,et al.J. Biol. Chem. 272:14611-14616(1997).  
Ludes-Meyers J.H.,et al.Oncogene 23:5049-5055(2004).