

**HMG20B Antibody (N-Term)**  
**Purified Rabbit Polyclonal Antibody (Pab)**  
**Catalog # AP21913a****Specification**

---

**HMG20B Antibody (N-Term) - Product Information**

Application	WB,E
Primary Accession	<a href="#">O9P0W2</a>
Other Accession	<a href="#">Q32L68</a>
Reactivity	Human
Predicted	Bovine
Host	Rabbit
Clonality	polyclonal
Isotype	Rabbit IgG
Calculated MW	35813

**HMG20B Antibody (N-Term) - Additional Information****Gene ID** 10362**Other Names**

SWI/SNF-related matrix-associated actin-dependent regulator of chromatin subfamily E member 1-related, SMARCE1-related protein, BRCA2-associated factor 35, HMG box-containing protein 20B, HMG domain-containing protein 2, HMG domain-containing protein HMGX2, Sox-like transcriptional factor, Structural DNA-binding protein BRAF35, HMG20B, BRAF35, HMGX2, HMGXB2, SMARCE1R

**Target/Specificity**

This HMG20B antibody is generated from a rabbit immunized with a KLH conjugated synthetic peptide between 11-43 amino acids from human HMG20B.

**Dilution**

WB~~1:2000

E~~Use at an assay dependent concentration.

**Format**

Purified polyclonal antibody supplied in PBS with 0.09% (W/V) sodium azide. This antibody is purified through a protein A column, followed by peptide affinity purification.

**Storage**

Maintain refrigerated at 2-8°C for up to 2 weeks. For long term storage store at -20°C in small aliquots to prevent freeze-thaw cycles.

**Precautions**

HMG20B Antibody (N-Term) is for research use only and not for use in diagnostic or therapeutic procedures.

**HMG20B Antibody (N-Term) - Protein Information**

**Name** HMG20B

**Synonyms** BRAF35, HMGX2, HMGXB2, SMARCE1R

**Function** Required for correct progression through G2 phase of the cell cycle and entry into mitosis. Required for RCOR1/CoREST mediated repression of neuronal specific gene promoters.

**Cellular Location**

Nucleus. Chromosome. Note=Localized to condensed chromosomes in mitosis in conjunction with BRCA2

**Tissue Location**

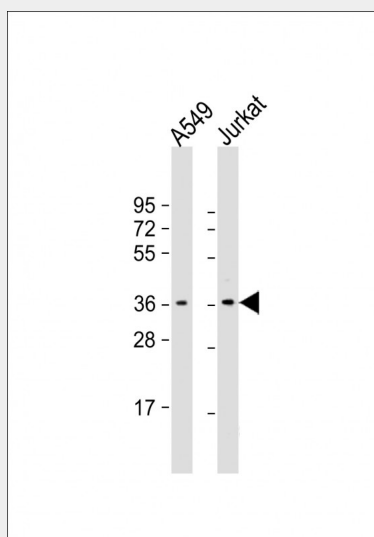
Ubiquitously expressed in adult tissues.

### HMG20B Antibody (N-Term) - Protocols

Provided below are standard protocols that you may find useful for product applications.

- [Western Blot](#)
- [Blocking Peptides](#)
- [Dot Blot](#)
- [Immunohistochemistry](#)
- [Immunofluorescence](#)
- [Immunoprecipitation](#)
- [Flow Cytometry](#)
- [Cell Culture](#)

### HMG20B Antibody (N-Term) - Images



All lanes : Anti-HMG20B Antibody (N-Term) at 1:2000 dilution Lane 1: A549 whole cell lysate Lane 2: Jurkat whole cell lysate Lysates/proteins at 20 µg per lane. Secondary Goat Anti-Rabbit IgG, (H+L), Peroxidase conjugated at 1/10000 dilution. Predicted band size : 36 kDa Blocking/Dilution buffer: 5% NFDM/TBST.

### HMG20B Antibody (N-Term) - Background

Required for correct progression through G2 phase of the cell cycle and entry into mitosis.

Required for RCOR1/CoREST mediated repression of neuronal specific gene promoters.

**HMG20B Antibody (N-Term) - References**

Sumoy L.,et al.Cytogenet. Cell Genet. 88:62-67(2000).  
Marmorstein L.Y.,et al.Cell 104:247-257(2001).  
Lee Y.M.,et al.Biochim. Biophys. Acta 1574:269-276(2002).  
Wang C.,et al.Biochem. Biophys. Res. Commun. 295:129-135(2002).  
Ota T.,et al.Nat. Genet. 36:40-45(2004).