

**DNASE1L2 Antibody (C-Term)**  
**Purified Rabbit Polyclonal Antibody (Pab)**  
**Catalog # AP21923b****Specification**

---

**DNASE1L2 Antibody (C-Term) - Product Information**

Application	WB,E
Primary Accession	<a href="#">Q92874</a>
Reactivity	Human
Host	Rabbit
Clonality	polyclonal
Isotype	Rabbit IgG
Calculated MW	32853
Antigen Region	199-229

**DNASE1L2 Antibody (C-Term) - Additional Information****Gene ID** 1775**Other Names**

Deoxyribonuclease-1-like 2, 3.1.21.-, DNase I homolog protein DHP1, Deoxyribonuclease I-like 2, DNase I-like 2, DNASE1L2, DHP1, DNAS1L2

**Target/Specificity**

This DNASE1L2 antibody is generated from a rabbit immunized with a KLH conjugated synthetic peptide between 199-229 amino acids from human DNASE1L2.

**Dilution**

WB~~1:2000

E~~Use at an assay dependent concentration.

**Format**

Purified polyclonal antibody supplied in PBS with 0.09% (W/V) sodium azide. This antibody is purified through a protein A column, followed by peptide affinity purification.

**Storage**

Maintain refrigerated at 2-8°C for up to 2 weeks. For long term storage store at -20°C in small aliquots to prevent freeze-thaw cycles.

**Precautions**

DNASE1L2 Antibody (C-Term) is for research use only and not for use in diagnostic or therapeutic procedures.

**DNASE1L2 Antibody (C-Term) - Protein Information****Name** DNASE1L2**Synonyms** DHP1, DNAS1L2

**Function** Divalent cation-dependent acid DNA endonuclease involved in the breakdown of the nucleus during corneocyte formation of epidermal keratinocytes. May play an immune role by eliminating harmful DNA released into the extracellular environment by damaged epidermal cells.

**Cellular Location**

Cytoplasm. Secreted

**Tissue Location**

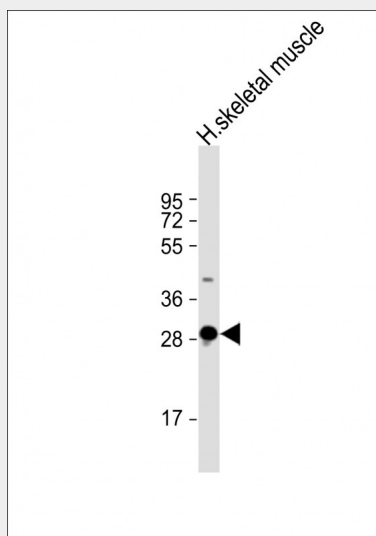
Preferentially expressed in the skin and up-regulated during keratinocytes differentiation. Highly abundant (at protein level) in the stratum granulosum

### DNASE1L2 Antibody (C-Term) - Protocols

Provided below are standard protocols that you may find useful for product applications.

- [Western Blot](#)
- [Blocking Peptides](#)
- [Dot Blot](#)
- [Immunohistochemistry](#)
- [Immunofluorescence](#)
- [Immunoprecipitation](#)
- [Flow Cytometry](#)
- [Cell Culture](#)

### DNASE1L2 Antibody (C-Term) - Images



Anti-DNASE1L2 Antibody (C-Term) at 1:2000 dilution + human skeletal muscle lysate  
Lysates/proteins at 20 µg per lane. Secondary Goat Anti-Rabbit IgG, (H+L), Peroxidase conjugated  
at 1/10000 dilution. Predicted band size : 33 kDa Blocking/Dilution buffer: 5% NFDM/TBST.

### DNASE1L2 Antibody (C-Term) - Background

Divalent cation-dependent acid DNA endonuclease involved in the breakdown of the nucleus during corneocyte formation of epidermal keratinocytes. May play an immune role by eliminating harmful DNA released into the extracellular environment by damaged epidermal cells.

### DNASE1L2 Antibody (C-Term) - References

Rodriguez A.M.,et al.Genomics 42:507-513(1997).  
Shiokawa D.,et al.Genomics 84:95-105(2004).  
Ota T.,et al.Nat. Genet. 36:40-45(2004).  
Martin J.,et al.Nature 432:988-994(2004).  
Mural R.J.,et al.Submitted (SEP-2005) to the EMBL/GenBank/DDBJ databases.