

**NAT8L Antibody (N-Term)**  
**Purified Rabbit Polyclonal Antibody (Pab)**  
**Catalog # AP21925a**

**Specification**

---

**NAT8L Antibody (N-Term) - Product Information**

Application	WB, IHC-P-Leica,E
Primary Accession	<a href="#">Q8N9F0</a>
Other Accession	<a href="#">Q3UGX3</a> , <a href="#">D3ZVU9</a>
Reactivity	Human
Predicted	Mouse, Rat
Host	Rabbit
Clonality	polyclonal
Isotype	Rabbit IgG

**NAT8L Antibody (N-Term) - Additional Information**

**Gene ID** 339983

**Other Names**

N-acetylaspartate synthetase, NAA synthetase, 2.3.1.17, Camello-like protein 3, N-acetyltransferase 8-like protein, NAT8L, CML3

**Target/Specificity**

This NAT8L antibody is generated from a rabbit immunized with a KLH conjugated synthetic peptide between 59-93 amino acids from human NAT8L.

**Dilution**

WB~~1:1000  
IHC-P-Leica~~1:250

**Format**

Purified polyclonal antibody supplied in PBS with 0.09% (W/V) sodium azide. This antibody is purified through a protein A column, followed by peptide affinity purification.

**Storage**

Maintain refrigerated at 2-8°C for up to 2 weeks. For long term storage store at -20°C in small aliquots to prevent freeze-thaw cycles.

**Precautions**

NAT8L Antibody (N-Term) is for research use only and not for use in diagnostic or therapeutic procedures.

**NAT8L Antibody (N-Term) - Protein Information**

**Name** NAT8L ([HGNC:26742](#))

**Synonyms** CML3

**Function** Catalyzes the synthesis of N-acetylaspartate acid (NAA) from L-aspartate and acetyl-CoA (PubMed:[19524112](#), PubMed:[19807691](#), PubMed:[20385109](#)). Promotes dopamine uptake by regulating TNF-alpha expression (By similarity). Attenuates methamphetamine-induced inhibition of dopamine uptake (PubMed:[20385109](#)).

#### Cellular Location

Cytoplasm. Microsome membrane {ECO:0000250|UniProtKB:D3ZVU9}; Single-pass membrane protein. Mitochondrion membrane; Single-pass membrane protein. Endoplasmic reticulum membrane {ECO:0000250|UniProtKB:Q3UGX3}; Single-pass membrane protein. Note=Its enzymatic activity contribution is quantitatively larger in mitochondrial compartment than in extramitochondrial compartment.

#### Tissue Location

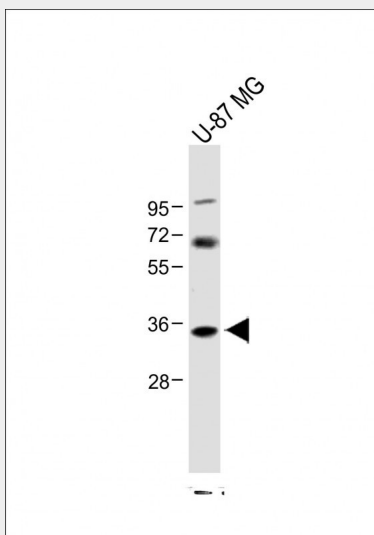
Expressed in brain..

### NAT8L Antibody (N-Term) - Protocols

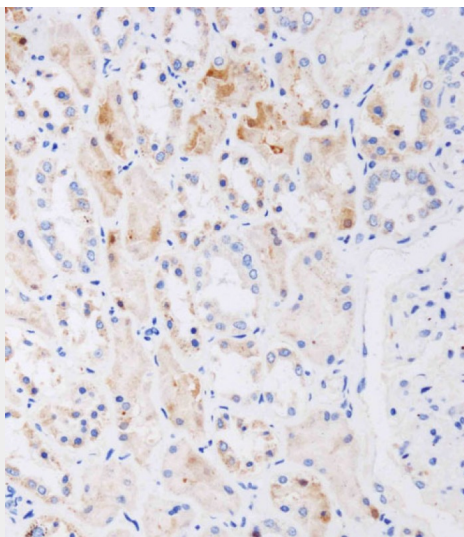
Provided below are standard protocols that you may find useful for product applications.

- [Western Blot](#)
- [Blocking Peptides](#)
- [Dot Blot](#)
- [Immunohistochemistry](#)
- [Immunofluorescence](#)
- [Immunoprecipitation](#)
- [Flow Cytometry](#)
- [Cell Culture](#)

### NAT8L Antibody (N-Term) - Images



Anti-NAT8L Antibody (N-Term) at 1:1000 dilution + U-87 MG whole cell lysate Lysates/proteins at 20 µg per lane. Secondary Goat Anti-Rabbit IgG, (H+L), Peroxidase conjugated at 1/10000 dilution. Predicted band size : 33 kDa Blocking/Dilution buffer: 5% NFDM/TBST.



Immunohistochemical analysis of AP21925A on paraffin-embedded human kidney tissue was performed on the Leica® BOND RXm. Tissue was fixed with formaldehyde at room temperature. Heat induced epitope retrieval was performed by EDTA buffer (pH9. 0). Samples were incubated with primary antibody(1:250) for 15min at room temperature. Leica Bond Polymer Refine Detection was used as the secondary antibody.

#### **NAT8L Antibody (N-Term) - Background**

Plays a role in the regulation of lipogenesis by producing N-acetylaspartate acid (NAA), a brain-specific metabolite. NAA occurs in high concentration in brain and its hydrolysis plays a significant part in the maintenance of intact white matter. Promotes dopamine uptake by regulating TNF-alpha expression. Attenuates methamphetamine-induced inhibition of dopamine uptake.

#### **NAT8L Antibody (N-Term) - References**

Hillier L.W.,et al.Nature 434:724-731(2005).  
Brandenberger R.,et al.Nat. Biotechnol. 22:707-716(2004).  
Ota T.,et al.Nat. Genet. 36:40-45(2004).  
Popsueva A.E.,et al.Dev. Biol. 234:483-496(2001).  
Arun P.,et al.Neurochem. Int. 55:219-225(2009).