

**EFS Antibody (Center)**  
**Purified Rabbit Polyclonal Antibody (Pab)**  
**Catalog # AP21926c****Specification**

---

**EFS Antibody (Center) - Product Information**

Application	WB,E
Primary Accession	<a href="#">O43281</a>
Reactivity	Human
Host	Rabbit
Clonality	polyclonal
Isotype	Rabbit IgG
Calculated MW	58815

**EFS Antibody (Center) - Additional Information****Gene ID** 10278**Other Names**

Embryonal Fyn-associated substrate, hEFS, Cas scaffolding protein family member 3, EFS, CASS3

**Target/Specificity**

This EFS antibody is generated from a rabbit immunized with a KLH conjugated synthetic peptide between 367-399 amino acids from the Central region of human EFS.

**Dilution**

WB~~1:1000-1:2000

E~~Use at an assay dependent concentration.

**Format**

Purified polyclonal antibody supplied in PBS with 0.09% (W/V) sodium azide. This antibody is purified through a protein A column, followed by peptide affinity purification.

**Storage**

Maintain refrigerated at 2-8°C for up to 2 weeks. For long term storage store at -20°C in small aliquots to prevent freeze-thaw cycles.

**Precautions**

EFS Antibody (Center) is for research use only and not for use in diagnostic or therapeutic procedures.

**EFS Antibody (Center) - Protein Information****Name** EFS**Synonyms** CASS3**Function** Docking protein which plays a central coordinating role for tyrosine-kinase-based

signaling related to cell adhesion. May serve as an activator of SRC and a downstream effector. Interacts with the SH3 domain of FYN and with CRK, SRC, and YES (By similarity).

#### Tissue Location

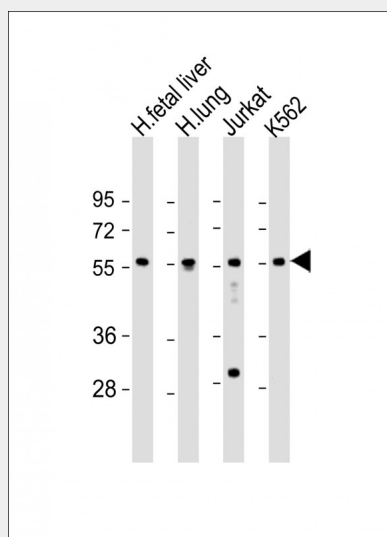
The protein has been detected in lung and placenta.

### EFS Antibody (Center) - Protocols

Provided below are standard protocols that you may find useful for product applications.

- [Western Blot](#)
- [Blocking Peptides](#)
- [Dot Blot](#)
- [Immunohistochemistry](#)
- [Immunofluorescence](#)
- [Immunoprecipitation](#)
- [Flow Cytometry](#)
- [Cell Culture](#)

### EFS Antibody (Center) - Images



All lanes : Anti-EFS Antibody (Center) at 1:1000-1:2000 dilution Lane 1: human fetal liver lysate Lane 2: human lung lysate Lane 3: Jurkat whole cell lysate Lane 4: K562 whole cell lysate Lysates/proteins at 20 µg per lane. Secondary Goat Anti-Rabbit IgG, (H+L), Peroxidase conjugated at 1/10000 dilution. Predicted band size : 59 kDa Blocking/Dilution buffer: 5% NFDM/TBST.

### EFS Antibody (Center) - Background

Docking protein which plays a central coordinating role for tyrosine-kinase-based signaling related to cell adhesion. May serve as an activator of SRC and a downstream effector. Interacts with the SH3 domain of FYN and with CRK, SRC, and YES (By similarity).

### EFS Antibody (Center) - References

Ishino M.,et al.Oncogene 15:1741-1745(1997).  
Ota T.,et al.Nat. Genet. 36:40-45(2004).  
Heilig R.,et al.Nature 421:601-607(2003).

Mural R.J.,et al.Submitted (SEP-2005) to the EMBL/GenBank/DDBJ databases.  
Sjoebloom T.,et al.Science 314:268-274(2006).