

**TMEM115 Antibody (C-Term)**  
**Purified Rabbit Polyclonal Antibody (Pab)**  
**Catalog # AP21934b****Specification**

---

**TMEM115 Antibody (C-Term) - Product Information**

Application	WB,E
Primary Accession	<a href="#">Q12893</a>
Other Accession	<a href="#">A4FUB8</a> , <a href="#">Q9WUH1</a>
Reactivity	Human
Predicted	Bovine, Mouse
Host	Rabbit
Clonality	polyclonal
Isotype	Rabbit IgG
Calculated MW	38197

**TMEM115 Antibody (C-Term) - Additional Information****Gene ID** 11070**Other Names**

Transmembrane protein 115, Placental protein 6, Protein PL6, TMEM115 (<a href="http://www.genenames.org/cgi-bin/gene\_symbol\_report?hgnc\_id=30055" target="\_blank">HGNC:30055</a>)

**Target/Specificity**

This TMEM115 antibody is generated from a rabbit immunized with a KLH conjugated synthetic peptide between 249-283 amino acids from of human TMEM115.

**Dilution**

WB~~1:2000

E~~Use at an assay dependent concentration.

**Format**

Purified polyclonal antibody supplied in PBS with 0.09% (W/V) sodium azide. This antibody is purified through a protein A column, followed by peptide affinity purification.

**Storage**

Maintain refrigerated at 2-8°C for up to 2 weeks. For long term storage store at -20°C in small aliquots to prevent freeze-thaw cycles.

**Precautions**

TMEM115 Antibody (C-Term) is for research use only and not for use in diagnostic or therapeutic procedures.

**TMEM115 Antibody (C-Term) - Protein Information****Name** TMEM115 ([HGNC:30055](#))

**Function** May play a role in retrograde transport of proteins from the Golgi to the endoplasmic reticulum. May indirectly play a role in protein glycosylation in the Golgi.

**Cellular Location**

Golgi apparatus, Golgi stack membrane; Multi-pass membrane protein

**Tissue Location**

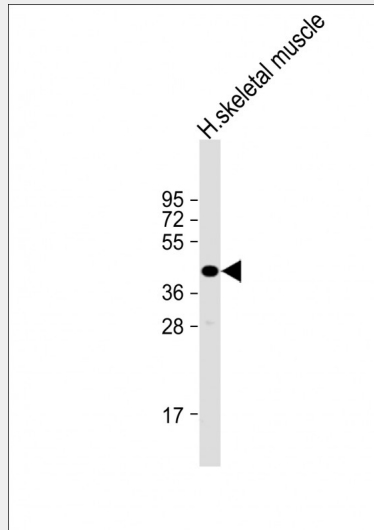
Expressed strongly in kidney and skeletal muscle, followed by liver, placenta, pancreas, and lung, with low amounts in heart and only traces in brain (PubMed:11085536). Widely expressed with ubiquitous expression in epithelial tissues (at protein level) (PubMed:17973242).

**TMEM115 Antibody (C-Term) - Protocols**

Provided below are standard protocols that you may find useful for product applications.

- [Western Blot](#)
- [Blocking Peptides](#)
- [Dot Blot](#)
- [Immunohistochemistry](#)
- [Immunofluorescence](#)
- [Immunoprecipitation](#)
- [Flow Cytometry](#)
- [Cell Culture](#)

**TMEM115 Antibody (C-Term) - Images**



Anti-TMEM115 Antibody (C-Term) at 1:2000 dilution + human skeletal muscle lysate  
Lysates/proteins at 20 µg per lane. Secondary Goat Anti-Rabbit IgG, (H+L), Peroxidase conjugated  
at 1/10000 dilution. Predicted band size : 38 kDa Blocking/Dilution buffer: 5% NFDM/TBST.

**TMEM115 Antibody (C-Term) - Background**

May play a role in retrograde transport of proteins from the Golgi to the endoplasmic reticulum.  
May indirectly play a role in protein glycosylation in the Golgi.

**TMEM115 Antibody (C-Term) - References**

Lerman M.I., et al. Cancer Res. 60:6116-6133(2000).  
Ebert L., et al. Submitted (JUN-2004) to the EMBL/GenBank/DDBJ databases.  
Muzny D.M., et al. Nature 440:1194-1198(2006).  
Mural R.J., et al. Submitted (JUL-2005) to the EMBL/GenBank/DDBJ databases.  
Ivanova A.V., et al. J. Pathol. 214:46-57(2008).