

RSPO1 Antibody (C-Term)
Purified Rabbit Polyclonal Antibody (Pab)
Catalog # AP21954b**Specification**

RSPO1 Antibody (C-Term) - Product Information

Application	WB,E
Primary Accession	Q2MKA7
Reactivity	Human
Host	Rabbit
Clonality	polyclonal
Isotype	Rabbit IgG
Calculated MW	28959

RSPO1 Antibody (C-Term) - Additional Information**Gene ID** 284654**Other Names**

R-spondin-1, Roof plate-specific spondin-1, hRspo1, RSPO1

Target/Specificity

This RSPO1 antibody is generated from a rabbit immunized with a KLH conjugated synthetic peptide between 206-240 amino acids from human RSPO1.

Dilution

WB~~1:2000

E~~Use at an assay dependent concentration.

Format

Purified polyclonal antibody supplied in PBS with 0.09% (W/V) sodium azide. This antibody is purified through a protein A column, followed by peptide affinity purification.

Storage

Maintain refrigerated at 2-8°C for up to 2 weeks. For long term storage store at -20°C in small aliquots to prevent freeze-thaw cycles.

Precautions

RSPO1 Antibody (C-Term) is for research use only and not for use in diagnostic or therapeutic procedures.

RSPO1 Antibody (C-Term) - Protein Information**Name** RSPO1

Function Activator of the canonical Wnt signaling pathway by acting as a ligand for LGR4-6 receptors (PubMed:[29769720](#)). Upon binding to LGR4-6 (LGR4, LGR5 or LGR6), LGR4-6 associate with phosphorylated LRP6 and frizzled receptors that are activated by extracellular Wnt receptors,

triggering the canonical Wnt signaling pathway to increase expression of target genes. Also regulates the canonical Wnt/beta-catenin- dependent pathway and non-canonical Wnt signaling by acting as an inhibitor of ZNRF3, an important regulator of the Wnt signaling pathway. Acts as a ligand for frizzled FZD8 and LRP6. May negatively regulate the TGF-beta pathway. Has a essential roles in ovary determination. Regulates Wnt signaling by antagonizing DKK1/KREM1- mediated internalization of LRP6 through an interaction with KREM1 (PubMed:[17804805](#)).

Cellular Location

Secreted. Nucleus {ECO:0000250|UniProtKB:Q9Z132} Note=Seems to mainly localize to nucleoli {ECO:0000250|UniProtKB:Q9Z132}

Tissue Location

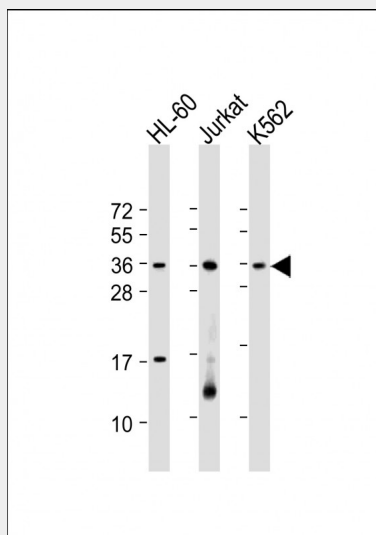
Abundantly expressed in adrenal glands, ovary, testis, thyroid and trachea but not in bone marrow, spinal cord, stomach, leukocytes colon, small intestine, prostate, thymus and spleen.

RSPO1 Antibody (C-Term) - Protocols

Provided below are standard protocols that you may find useful for product applications.

- [Western Blot](#)
- [Blocking Peptides](#)
- [Dot Blot](#)
- [Immunohistochemistry](#)
- [Immunofluorescence](#)
- [Immunoprecipitation](#)
- [Flow Cytometry](#)
- [Cell Culture](#)

RSPO1 Antibody (C-Term) - Images



All lanes : Anti-RSPO1 Antibody (C-Term) at 1:2000 dilution Lane 1: HL-60 whole cell lysate Lane 2: Jurkat whole cell lysate Lane 3: K562 whole cell lysate Lysates/proteins at 20 µg per lane. Secondary Goat Anti-Rabbit IgG, (H+L), Peroxidase conjugated at 1/10000 dilution. Predicted band size : 29 kDa Blocking/Dilution buffer: 5% NFDN/TBST.

RSPO1 Antibody (C-Term) - Background

Activator of the canonical Wnt signaling pathway by acting as a ligand for LGR4-6 receptors. Upon binding to LGR4-6 (LGR4, LGR5 or LGR6), LGR4-6 associate with phosphorylated LRP6 and frizzled receptors that are activated by extracellular Wnt receptors, triggering the canonical Wnt signaling pathway to increase expression of target genes. Also regulates the canonical Wnt/beta-catenin-dependent pathway and non-canonical Wnt signaling by acting as an inhibitor of ZNRF3, an important regulator of the Wnt signaling pathway. Acts as a ligand for frizzled FZD8 and LRP6. May negatively regulate the TGF-beta pathway. Has a essential roles in ovary determination.

RSPO1 Antibody (C-Term) - References

Kim K.-A.,et al.Science 309:1256-1259(2005).
Parma P.,et al.Nat. Genet. 38:1304-1309(2006).
Ota T.,et al.Nat. Genet. 36:40-45(2004).
Gregory S.G.,et al.Nature 441:315-321(2006).
Hao H.X.,et al.Nature 485:195-200(2012).