

**BANP Antibody (N-Term)**  
**Purified Rabbit Polyclonal Antibody (Pab)**  
**Catalog # AP21960a****Specification**

---

**BANP Antibody (N-Term) - Product Information**

Application	WB,E
Primary Accession	<a href="#">Q8N9N5</a>
Other Accession	<a href="#">Q0VCW3</a> , <a href="#">Q8VBU8</a>
Reactivity	Human
Predicted	Bovine, Mouse
Host	Rabbit
Clonality	polyclonal
Isotype	Rabbit IgG
Calculated MW	56494

**BANP Antibody (N-Term) - Additional Information****Gene ID** 54971**Other Names**

Protein BANP, BEN domain-containing protein 1, Btg3-associated nuclear protein, Scaffold/matrix-associated region-1-binding protein, BANP, BEND1, SMAR1

**Dilution**

WB~~1:2000

**Format**

Purified polyclonal antibody supplied in PBS with 0.09% (W/V) sodium azide. This antibody is purified through a protein A column, followed by peptide affinity purification.

**Storage**

Maintain refrigerated at 2-8°C for up to 2 weeks. For long term storage store at -20°C in small aliquots to prevent freeze-thaw cycles.

**Precautions**

BANP Antibody (N-Term) is for research use only and not for use in diagnostic or therapeutic procedures.

**BANP Antibody (N-Term) - Protein Information****Name** BANP**Synonyms** BEND1, SMAR1

**Function** Controls V(D)J recombination during T-cell development by repressing T-cell receptor (TCR) beta enhancer function. Binds to scaffold/matrix attachment region beta (S/MARbeta), an ATC-rich DNA sequence located upstream of the TCR beta enhancer. Represses cyclin D1

transcription by recruiting HDAC1 to its promoter, thereby diminishing H3K9ac, H3S10ph and H4K8ac levels. Promotes TP53 activation, which causes cell cycle arrest (By similarity).

**Cellular Location**

Nucleus.

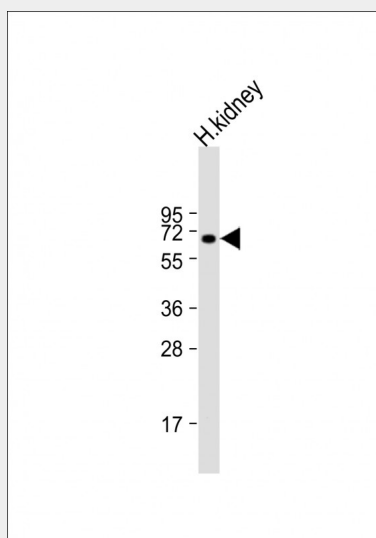
**Tissue Location**

Down-regulated in breast cancer cell lines.

**BANP Antibody (N-Term) - Protocols**

Provided below are standard protocols that you may find useful for product applications.

- [Western Blot](#)
- [Blocking Peptides](#)
- [Dot Blot](#)
- [Immunohistochemistry](#)
- [Immunofluorescence](#)
- [Immunoprecipitation](#)
- [Flow Cytometry](#)
- [Cell Culture](#)

**BANP Antibody (N-Term) - Images**

Anti-BANP Antibody (N-Term) at 1:2000 dilution + human kidney lysate Lysates/proteins at 20 µg per lane. Secondary Goat Anti-Rabbit IgG, (H+L), Peroxidase conjugated at 1/10000 dilution. Predicted band size : 56 kDa Blocking/Dilution buffer: 5% NFDM/TBST.