

**IGFBP5 Antibody (Center)**  
**Purified Rabbit Polyclonal Antibody (Pab)**  
**Catalog # AP21963c****Specification**

---

**IGFBP5 Antibody (Center) - Product Information**

Application	WB,E
Primary Accession	<a href="#">P24593</a>
Reactivity	Human
Host	Rabbit
Clonality	polyclonal
Isotype	Rabbit IgG
Calculated MW	30570

**IGFBP5 Antibody (Center) - Additional Information****Gene ID** 3488**Other Names**

Insulin-like growth factor-binding protein 5, IBP-5, IGF-binding protein 5, IGFBP-5, IGFBP5, IBP5

**Target/Specificity**

This IGFBP5 antibody is generated from a rabbit immunized with a KLH conjugated synthetic peptide between 87-121 amino acids from the Central region of human IGFBP5.

**Dilution**

WB~~1:2000

**Format**

Purified polyclonal antibody supplied in PBS with 0.09% (W/V) sodium azide. This antibody is purified through a protein A column, followed by peptide affinity purification.

**Storage**

Maintain refrigerated at 2-8°C for up to 2 weeks. For long term storage store at -20°C in small aliquots to prevent freeze-thaw cycles.

**Precautions**

IGFBP5 Antibody (Center) is for research use only and not for use in diagnostic or therapeutic procedures.

**IGFBP5 Antibody (Center) - Protein Information****Name** IGFBP5**Synonyms** IBP5**Function** IGF-binding proteins prolong the half-life of the IGFs and have been shown to either inhibit or stimulate the growth promoting effects of the IGFs on cell culture. They alter the

interaction of IGFs with their cell surface receptors.

#### **Cellular Location**

Secreted.

#### **Tissue Location**

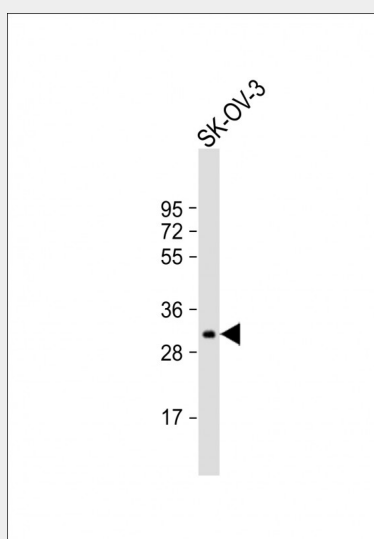
Osteosarcoma, and at lower levels in liver, kidney and brain

### **IGFBP5 Antibody (Center) - Protocols**

Provided below are standard protocols that you may find useful for product applications.

- [Western Blot](#)
- [Blocking Peptides](#)
- [Dot Blot](#)
- [Immunohistochemistry](#)
- [Immunofluorescence](#)
- [Immunoprecipitation](#)
- [Flow Cytometry](#)
- [Cell Culture](#)

### **IGFBP5 Antibody (Center) - Images**



Anti-IGFBP5 Antibody (Center) at 1:2000 dilution + SK-OV-3 whole cell lysate Lysates/proteins at 20 µg per lane. Secondary Goat Anti-Rabbit IgG, (H+L), Peroxidase conjugated at 1/10000 dilution. Predicted band size : 31 kDa Blocking/Dilution buffer: 5% NFDM/TBST.

### **IGFBP5 Antibody (Center) - Background**

IGF-binding proteins prolong the half-life of the IGFs and have been shown to either inhibit or stimulate the growth promoting effects of the IGFs on cell culture. They alter the interaction of IGFs with their cell surface receptors.

### **IGFBP5 Antibody (Center) - References**

Kiefer M.C., et al. Biochem. Biophys. Res. Commun. 176:219-225(1991).  
Shimasaki S., et al. J. Biol. Chem. 266:10646-10653(1991).

Allander S.V.,et al.J. Biol. Chem. 269:10891-10898(1994).

Yu W.,et al.Submitted (MAR-1998) to the EMBL/GenBank/DDBJ databases.

Kalnine N.,et al.Submitted (OCT-2004) to the EMBL/GenBank/DDBJ databases.