

**GHRL Antibody (N-Term)**  
**Purified Rabbit Polyclonal Antibody (Pab)**  
**Catalog # AP21965a****Specification**

---

**GHRL Antibody (N-Term) - Product Information**

Application	WB,E
Primary Accession	<a href="#">Q9UBU3</a>
Reactivity	Human
Host	Rabbit
Clonality	polyclonal
Isotype	Rabbit IgG
Calculated MW	12911

**GHRL Antibody (N-Term) - Additional Information****Gene ID** 51738**Other Names**

Appetite-regulating hormone, Growth hormone secretagogue, Growth hormone-releasing peptide, Motilin-related peptide, Protein M46, Ghrelin-27, Ghrelin-28, Ghrelin, Obestatin, GHRL, MTLRP

**Target/Specificity**

This GHRL antibody is generated from a rabbit immunized with a KLH conjugated synthetic peptide between 11-43 amino acids from human GHRL.

**Dilution**

WB~~1:2000

E~~Use at an assay dependent concentration.

**Format**

Purified polyclonal antibody supplied in PBS with 0.09% (W/V) sodium azide. This antibody is purified through a protein A column, followed by peptide affinity purification.

**Storage**

Maintain refrigerated at 2-8°C for up to 2 weeks. For long term storage store at -20°C in small aliquots to prevent freeze-thaw cycles.

**Precautions**

GHRL Antibody (N-Term) is for research use only and not for use in diagnostic or therapeutic procedures.

**GHRL Antibody (N-Term) - Protein Information****Name** GHRL**Synonyms** MTLRP

**Function** [Ghrelin-27]: Ghrelin is the ligand for growth hormone secretagogue receptor type 1 (GHSR) (PubMed:[10604470](#)). Induces the release of growth hormone from the pituitary (PubMed:[10604470](#)). Has an appetite-stimulating effect, induces adiposity and stimulates gastric acid secretion. Involved in growth regulation.

#### **Cellular Location**

Secreted.

#### **Tissue Location**

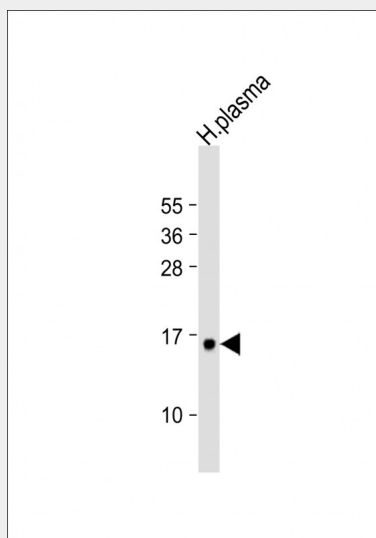
Highest level in stomach. All forms are found in serum as well. Other tissues compensate for the loss of ghrelin synthesis in the stomach following gastrectomy

### **GHRL Antibody (N-Term) - Protocols**

Provided below are standard protocols that you may find useful for product applications.

- [Western Blot](#)
- [Blocking Peptides](#)
- [Dot Blot](#)
- [Immunohistochemistry](#)
- [Immunofluorescence](#)
- [Immunoprecipitation](#)
- [Flow Cytometry](#)
- [Cell Culture](#)

### **GHRL Antibody (N-Term) - Images**



Anti-GHRL Antibody (N-Term) at 1:2000 dilution + human plasma lysate Lysates/proteins at 20 µg per lane. Secondary Goat Anti-Rabbit IgG, (H+L), Peroxidase conjugated at 1/10000 dilution. Predicted band size : 13 kDa Blocking/Dilution buffer: 5% NFDM/TBST.

### **GHRL Antibody (N-Term) - Background**

Ghrelin is the ligand for growth hormone secretagogue receptor type 1 (GHSR). Induces the release of growth hormone from the pituitary. Has an appetite-stimulating effect, induces adiposity and stimulates gastric acid secretion. Involved in growth regulation.

**GHRL Antibody (N-Term) - References**

Kojima M.,et al.Nature 402:656-660(1999).  
Tomasetto C.,et al.Gastroenterology 119:395-405(2000).  
Wajnrajch M.P.,et al.J. Endocr. Genet. 1:231-233(2000).  
Hosoda H.,et al.J. Biol. Chem. 278:64-70(2003).  
Seim I.,et al.BMC Genomics 8:298-298(2007).