

PLK5 Antibody (Center)
Purified Rabbit Polyclonal Antibody (Pab)
Catalog # AP21966c

Specification

PLK5 Antibody (Center) - Product Information

Application	WB,E
Primary Accession	Q496M5
Reactivity	Human
Host	Rabbit
Clonality	polyclonal
Isotype	Rabbit IgG
Calculated MW	36329

PLK5 Antibody (Center) - Additional Information

Gene ID 126520

Other Names

Inactive serine/threonine-protein kinase PLK5, Polo-like kinase 5, PLK-5, PLK5, PLK5P

Target/Specificity

This PLK5 antibody is generated from a rabbit immunized with a KLH conjugated synthetic peptide between 140-174 amino acids from the Central region of human PLK5.

Dilution

WB~~1:2000

E~~Use at an assay dependent concentration.

Format

Purified polyclonal antibody supplied in PBS with 0.09% (W/V) sodium azide. This antibody is purified through a protein A column, followed by peptide affinity purification.

Storage

Maintain refrigerated at 2-8°C for up to 2 weeks. For long term storage store at -20°C in small aliquots to prevent freeze-thaw cycles.

Precautions

PLK5 Antibody (Center) is for research use only and not for use in diagnostic or therapeutic procedures.

PLK5 Antibody (Center) - Protein Information

Name PLK5

Synonyms PLK5P

Function Inactive serine/threonine-protein kinase that plays a role in cell cycle progression and

neuronal differentiation.

Cellular Location

Nucleus, nucleolus. Cytoplasm

Tissue Location

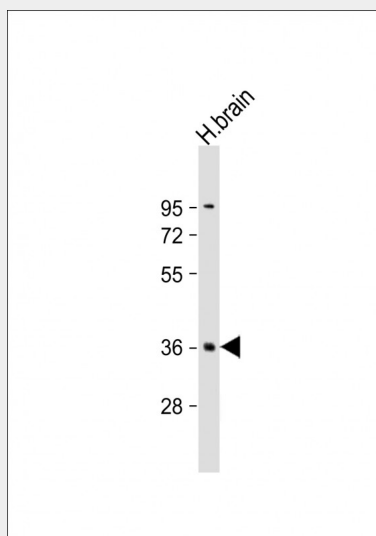
Expressed in the brain, neurons and glial cells. Also expressed in highly differentiated cells, such as the serous acini in the parotid gland, distal and proximal tubules of the kidney, tubules of the seminal gland, Kupffer cells and some hepatocytes in the liver, and some cells in the germinal center of lymph nodes (at protein level).

PLK5 Antibody (Center) - Protocols

Provided below are standard protocols that you may find useful for product applications.

- [Western Blot](#)
- [Blocking Peptides](#)
- [Dot Blot](#)
- [Immunohistochemistry](#)
- [Immunofluorescence](#)
- [Immunoprecipitation](#)
- [Flow Cytometry](#)
- [Cell Culture](#)

PLK5 Antibody (Center) - Images



Anti-PLK5 Antibody (Center) at 1:2000 dilution + human brain lysate Lysates/proteins at 20 µg per lane. Secondary Goat Anti-Rabbit IgG, (H+L), Peroxidase conjugated at 1/10000 dilution. Predicted band size : 36 kDa Blocking/Dilution buffer: 5% NFDm/TBST.

PLK5 Antibody (Center) - Background

Inactive serine/threonine-protein kinase that plays a role in cell cycle progression and neuronal differentiation.

PLK5 Antibody (Center) - References

Ota T.,et al.Nat. Genet. 36:40-45(2004).
Li H.,et al.Submitted (MAR-2006) to the EMBL/GenBank/DDBJ databases.
Grimwood J.,et al.Nature 428:529-535(2004).
de Carcer G.,et al.Mol. Cell. Biol. 31:1225-1239(2011).